

# Official Journal

## of the European Communities

Volume 17 No L 191

15 July 1974

English Edition

## Legislation

---

### Contents

#### I *Acts whose publication is obligatory*

.....

---

#### II *Acts whose publication is not obligatory*

##### Council

74/346/EEC:

- ★ Council Directive of 25 June 1974 on the approximation of the laws of the Member States relating to rear-view mirrors for wheeled agricultural or forestry tractors . . . . 1

74/347/EEC:

- ★ Council Directive of 25 June 1974 on the approximation of the laws of the Member States relating to the field of vision and windscreen wipers for wheeled agricultural or forestry tractors . . . . . 5

74/348/EEC:

- ★ Third Council Decision of 27 June 1974 on the equivalence of field inspections carried out in third countries on seed-producing crops . . . . . 11

74/349/EEC:

- ★ Third Council Decision of 27 June 1974 on the equivalence of seed produced in third countries . . . . . 17

74/350/EEC:

- ★ Council Decision of 27 June 1974 amending Decision No 73/83/EEC on the equivalence of field inspections carried out on seed-producing crops in Denmark, Ireland and the United Kingdom and Decision No 73/84/EEC on the equivalence of seed produced in Denmark, Ireland and the United Kingdom . . . . 27

## II

(Acts whose publication is not obligatory)

## COUNCIL

## COUNCIL DIRECTIVE

of 25 June 1974

on the approximation of the laws of the Member States relating to rear-view mirrors  
for wheeled agricultural or forestry tractors

(74/346/EEC)

THE COUNCIL OF THE EUROPEAN COMMUNITIES,

Having regard to the Treaty establishing the European Economic Community, and in particular Article 100 thereof;

Having regard to the proposal from the Commission;

Having regard to the Opinion of the European Parliament <sup>(1)</sup>;

Having regard to the Opinion of the Economic and Social Committee <sup>(2)</sup>;

Whereas the technical requirements with which tractors must comply pursuant to national laws relate, *inter alia*, to rear-view mirrors;

Whereas these requirements differ from one Member State to another; whereas it is therefore necessary that all Member States adopt the same requirements either in addition to or in place of their existing rules, in order in particular to allow the EEC type-approval procedure which was the subject of Council Directive No 74/150/EEC <sup>(3)</sup> of 4 March 1974 on the

approximation of the laws of the Member States relating to the type-approval of wheeled agricultural or forestry tractors to be applied in respect of each type of tractor,

HAS ADOPTED THIS DIRECTIVE:

*Article 1*

1. 'Agricultural or forestry tractor' means any motor vehicle, fitted with wheels or caterpillar tracks and having at least two axles, the main function of which lies in its tractive power and which is specially designed to tow, push, carry or power certain tools, machinery or trailers intended for agricultural or forestry use. It may be equipped to carry a load and passengers.

2. This Directive shall apply only to tractors defined in the preceding paragraph which are fitted with pneumatic tyres and which have two axles and a maximum design speed of between 6 and 25 km/h.

*Article 2*

No Member State may refuse to grant EEC type-approval or national type-approval of a tractor on grounds relating to rear-view mirrors if these satisfy the requirements set out in the Annex.

<sup>(1)</sup> OJ No 28, 17. 2. 1967, p. 462/67.

<sup>(2)</sup> OJ No 42, 7. 3. 1967, p. 620/67.

<sup>(3)</sup> OJ No L 84, 28. 3. 1974, p. 10.

*Article 3*

No Member State may refuse the registration or prohibit the sale, entry into service or use of tractors on grounds relating to rear-view mirrors if these satisfy the requirements set out in the Annex.

*Article 4*

The amendments necessary for adapting to technical progress the requirements of the Annex shall be adopted in accordance with the procedure laid down in Article 13 of Council Directive No 74/150/EEC.

*Article 5*

1. Member States shall put into force the provisions necessary in order to comply with this

Directive within 18 months, of its notification and shall forthwith inform the Commission thereof.

2. Member States shall ensure that the texts of the main provisions of national law which they adopt in the field covered by this Directive are communicated to the Commission.

*Article 6*

This Directive is addressed to the Member States.

Done at Luxembourg, 25 June 1974.

*For the Council*

*The President*

H. D. GENSCHER

## ANNEX

## 1. DEFINITIONS

- 1.1. 'Rear-view mirror' means any device intended to give, within the field of vision geometrically defined in item 2.5 below, a clear view to the rear which, within reasonable limits, is not blocked by component parts of the tractor or by the occupants of the tractor itself.
- 1.2. 'Interior rear-view mirror' means a device as defined in item 1.1 which is fitted inside the cab or frame of a tractor.
- 1.3. 'Exterior rear-view mirror' means a device as defined in item 1.1 which is mounted on any part of the external surface of a tractor.
- 1.4. 'Class of rear-view mirror' means all rear-view mirrors having one or more common characteristics or functions. Interior rear-view mirrors are grouped in class I, exterior rear-view mirrors in class II.

## 2. REQUIREMENTS FOR FITTING

## 2.1. General

- 2.1.1. Tractors may be fitted with rear-view mirrors of classes I and II only bearing the EEC type-approval mark laid down in Council Directive No 71/127/EEC <sup>(1)</sup> of 1 March 1971 on the approximation of the laws of the Member States relating to the rear-view mirrors of motor vehicles, as amended by the Act of Accession <sup>(2)</sup>.
- 2.1.2. Rear-view mirrors must be fixed in such a way that they remain steady under normal driving conditions.

## 2.2. Number

All tractors shall be equipped with at least one exterior rear-view mirror fitted to the left side of the tractor in Member States in which traffic drives on the right and to the right side of the tractor in Member States in which traffic drives on the left.

## 2.3. Position

- 2.3.1. The exterior rear-view mirror must be so placed that the driver, when sitting on the driving seat in a normal driving position, has a clear view of that part of the road defined in item 2.5.
- 2.3.2. The exterior rear-view mirror must be visible through the portion of the windscreen that is swept by the windscreen wiper or through the side windows if the tractor is fitted with them.
- 2.3.3. The rear-view mirror must not protrude beyond the external bodywork of the tractor or the tractor-trailer combination substantially more than is necessary to obtain the fields of vision laid down in item 2.5.
- 2.3.4. Where the bottom edge of an exterior rear-view mirror is less than 2 m above the ground when the tractor is laden, this rear-view mirror must not project more than 0.20 m beyond the overall width of the tractor or tractor-trailer combination measured without rear-view mirrors.
- 2.3.5. Subject to the requirements of items 2.3.3 and 2.3.4, rear-view mirrors may project beyond the tractor's permissible maximum width.

## 2.4. Adjustment

- 2.4.1. Any interior rear-view mirror must be adjustable by the driver from his driving position.
- 2.4.2. The driver must be able to adjust the exterior rear-view mirror from within the tractor. The mirror may, however, be locked into position from the outside.

<sup>(1)</sup> OJ No L 68, 22. 3. 1971, p. 1.

<sup>(2)</sup> OJ No L 73, 27. 3. 1972, p. 14.

- 2.4.3. The requirements of item 2.4.2 do not apply to exterior rear-view mirrors which, after being displaced, are returned automatically to their original position or can be restored to their original position without the use of tools.

2.5. **Fields of vision**

2.5.1. *Member States in which traffic drives on the right*

The field of vision of the left hand exterior rear-view mirror must be such that the driver can see to the rear at least that level part of the road as far as the horizon, which is to the left of the plane parallel to the vertical longitudinal median plane and which passes through the leftmost point of the overall width of the tractor or tractor-trailer combination.

2.5.2. *Member States in which traffic drives on the left*

The field of vision of the right hand exterior rear-view mirror must be such that the driver can see to the rear at least that level part of the road, as far as the horizon, which is to the right of the plane parallel to the vertical longitudinal median plane and which passes through the rightmost point of the overall width of the tractor or tractor-trailer combination.

---

## COUNCIL DIRECTIVE

of 25 June 1974

on the approximation of the laws of the Member States relating to the field of vision  
and windscreen wipers for wheeled agricultural or forestry tractors

(74/347/EEC)

THE COUNCIL OF THE EUROPEAN COMMUNITIES,

Having regard to the Treaty establishing the European Economic Community, and in particular Article 100 thereof;

Having regard to the proposal from the Commission;

Having regard to the Opinion of the European Parliament <sup>(1)</sup>;

Having regard to the Opinion of the Economic and Social Committee <sup>(2)</sup>;

Whereas the technical requirements with which tractors must comply pursuant to national laws relate, *inter alia*, to the field of vision and windscreen wipers;

Whereas these requirements differ from one Member State to another; whereas it is therefore necessary that all Member States adopt the same requirements either in addition to or in place of their existing rules in order, in particular, to allow the EEC type-approval procedure which was the subject of Council Directive No 74/150/EEC <sup>(3)</sup> of 4 March 1974 on the approximation of the laws of the Member States relating to the type-approval of wheeled agricultural or forestry tractors to be applied in respect of each type of tractor,

HAS ADOPTED THIS DIRECTIVE:

*Article 1*

1. 'Agricultural or forestry tractor' means any motor vehicle, fitted with wheels or caterpillar tracks and having at least two axles, the main function of which lies in its tractive power and which is specially designed to tow, push, carry or power certain tools, machinery or trailers intended for agricultural or forestry use. It may be equipped to carry a load and passengers.

2. This Directive shall apply only to tractors defined in the preceding paragraph which are fitted

with pneumatic tyres and which have two axles and a maximum design speed of between 6 and 25 km/h.

*Article 2*

No Member State may refuse to grant EEC type-approval or national type-approval of a tractor on grounds relating to the field of vision or windscreen wipers if these satisfy the requirements set out in the Annex.

*Article 3*

No Member State may refuse the registration or prohibit the sale, entry into service or use of tractors on grounds relating to the field of vision or windscreen wipers if these satisfy the requirements set out in the Annex.

*Article 4*

The amendments necessary for adapting to technical progress the requirements of the Annex shall be adopted in accordance with the procedure laid down in Article 13 of Directive No 74/150/EEC.

*Article 5*

1. Member States shall put into force the provisions necessary in order to comply with this Directive within 18 months of its notification and shall forthwith inform the Commission thereof.

2. Member States shall ensure that the texts of the main provisions of national law which they adopt in the field covered by this Directive are communicated to the Commission.

*Article 6*

This Directive is addressed to the Member States.

Done at Luxembourg, 25 June 1974.

For the Council

The President

H. D. GENSCHER

<sup>(1)</sup> OJ No 28, 17. 2. 1967, p. 462/67.

<sup>(2)</sup> OJ No 42, 7. 3. 1967, p. 620/67.

<sup>(3)</sup> OJ No L 84, 28. 3. 1974, p. 10.

**ANNEX****FIELD OF VISION****DEFINITIONS AND REQUIREMENTS****1. DEFINITIONS****1.1. Field of vision**

'Field of vision' means all forward and lateral directions in which the driver of the tractor can see.

**1.2. Reference point**

'Reference point' means the position, fixed by convention, of the tractor driver's eyes notionally located at a single point. The reference point is situated in the plane parallel to the longitudinal median plane of the tractor and passing through the centre of the seat, 700 mm vertically above the line of intersection of that plane and the surface of the seat and 270 mm in the direction of the pelvic support from the vertical plane passing through the front edge of the surface of the seat and perpendicular to the longitudinal median plane of the tractor (Figure 1). The reference point thus determined relates to the seat when unoccupied and fitted in the central position specified by the tractor manufacturer.

**1.3. Semi-circle of vision**

'Semi-circle of vision' means the semi-circle described by a radius of 12 m about a point situated in the horizontal plane of the road vertically below the reference point, in such a way that, when facing the direction of motion, the arc of the semi-circle lies in front of the tractor, while the diameter bounding the semi-circle is at right angles to the longitudinal axis of the tractor (Figure 2).

**1.4. Masking effect**

'Masking effect' means the chords of the sectors of the semi-circle of vision which cannot be seen owing to structural components, e.g., roof pillars.

**1.5. Sector of vision**

'Sector of vision' means that part of the field of vision bounded:

**1.5.1. at the top,**

by a horizontal plane passing through the reference point;

**1.5.2. in the plane of the road,**

by the zone lying outside the semi-circle of vision, and forming the continuation of the sector of the semi-circle of vision, the chord of which is 9.5 m long, perpendicular to the plane parallel to the longitudinal median plane of the tractor passing through the centre of the driver's seat and bisected by that plane.

**1.6. Swept area of the windscreen wipers**

'Swept area of the windscreen wipers' means the area of the outer surface of the windscreen swept by the windscreen wipers.

**2. REQUIREMENTS****2.1. General**

The tractor shall be constructed and equipped in such a way that, in road traffic and in farm and forest use, the driver has an adequate field of vision, under all the usual conditions pertaining to highway use and to work undertaken in fields and forests. The field of vision is considered adequate when the driver has, as far as possible, a view of part of each front wheel and when the following requirements are fulfilled.

## 2.2. Checking of the field of vision

### 2.2.1. Procedure for determining masking effects

2.2.1.1. The tractor must be placed on a horizontal surface as shown in Figure 2. On a horizontal support level with the reference point, there must be mounted two point sources of light 65 mm apart and symmetrically mounted about the reference point. The support must be rotatable at its centre point about a vertical axis passing through the reference point. For the purpose of measuring the masking effects, the support must be so aligned that the line joining the two light sources is perpendicular to the line joining the masking component and the reference point. The silhouette overlaps projected onto the semi-circle of vision by the masking component as a result of switching on the light sources alternately must be recorded in accordance with item 1.4 (Figure 3).

2.2.1.2. Masking effects must not exceed 600 mm.

2.2.1.3. Masking effects due to adjacent structural components over 80 mm in width must be positioned in such a way that the line joining the centres of the invisible chords of the sectors of the semi-circle of vision is not less than 2.50 m in length.

2.2.1.4. There may be no more than six masking effects in the semi-circle of vision and no more than two inside the sector of vision defined in item 1.5.

2.2.1.5. Masking effects exceeding 600 mm but not exceeding 1 200 mm are, however, permissible if the components causing them cannot be redesigned or relocated. There must be no more than two such masking effects and these must lie outside the sector of vision.

2.2.1.6. Blind spots caused by type-approved rear-view mirrors may be disregarded if the design of these mirrors is such that they cannot be installed in any other way.

### 2.2.2. Mathematical determination of masking effects for binocular vision:

2.2.2.1. as an alternative to the procedure set out in item 2.2.1, the acceptability of individual masking effects can be determined mathematically. The requirements of items 2.2.1.3, 2.2.1.4, 2.2.1.5 and 2.2.1.6 shall apply in respect of the size, distribution and number of the masking effects;

2.2.2.2. for binocular vision with an inter-ocular distance of 65 mm, the masking effect expressed in mm is given by the formula:

$$v = \frac{b - 65}{a} \times 12000 + 65$$

in which:

a is the distance in millimetres between the component obstructing vision and the reference point measured along the visual radius joining the reference point, the centre of the component and the perimeter of the semi-circle of vision;

b is the width in millimetres of the component obstructing vision measured horizontally and perpendicular to the visual radius.

2.3. The test methods referred to under item 2.2 may be replaced by others if the latter can be shown to be equivalent.

2.4. Where, in the case of masking effects, Article 8 (3) of Directive No 74/150/EEC is to be applied, the procedure used shall be that given under item 2.2.2.

## 2.5. Transparent area of the windscreen

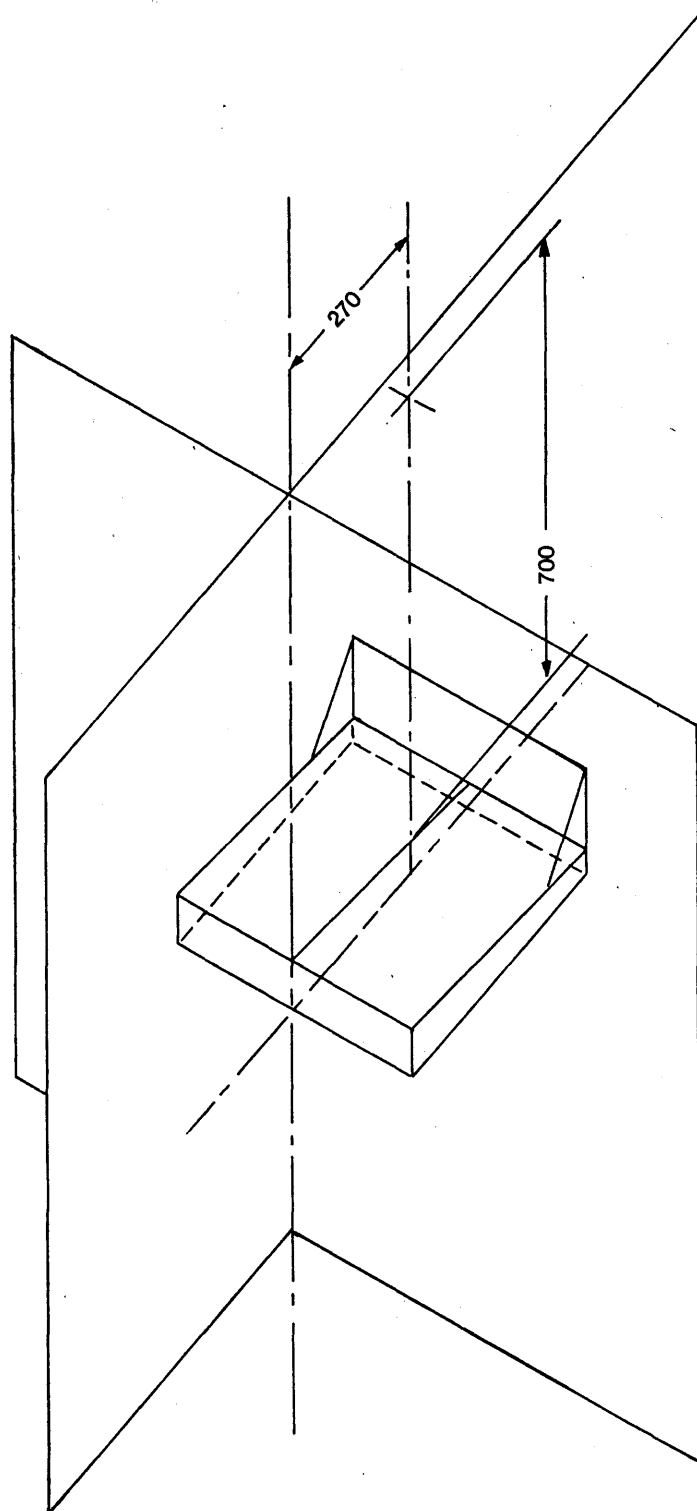
If the tractor is fitted with a windscreen, the transparent area thereof must be such that the requirements of item 2.2 are satisfied.

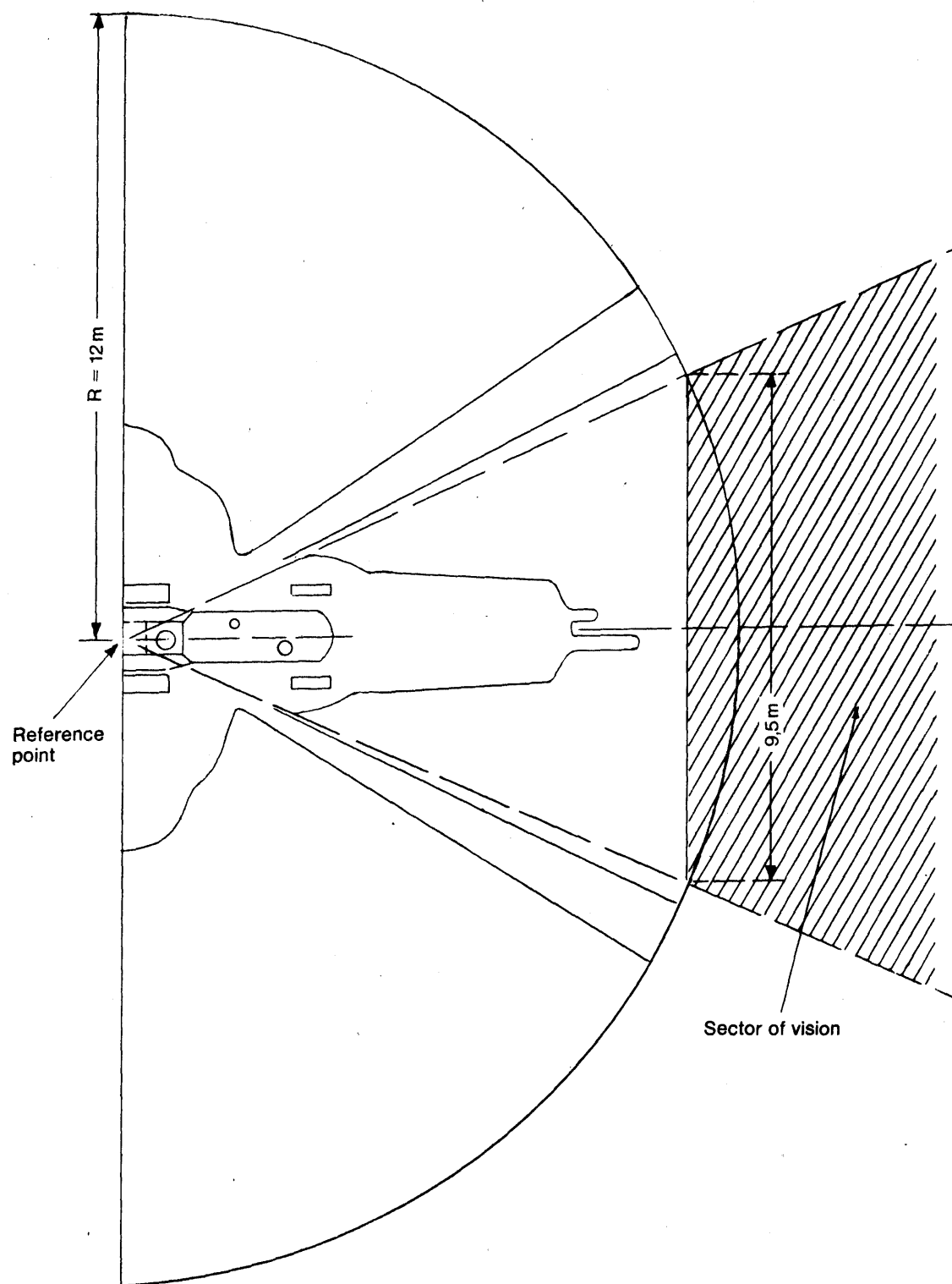
## 2.6. Windscreen wipers

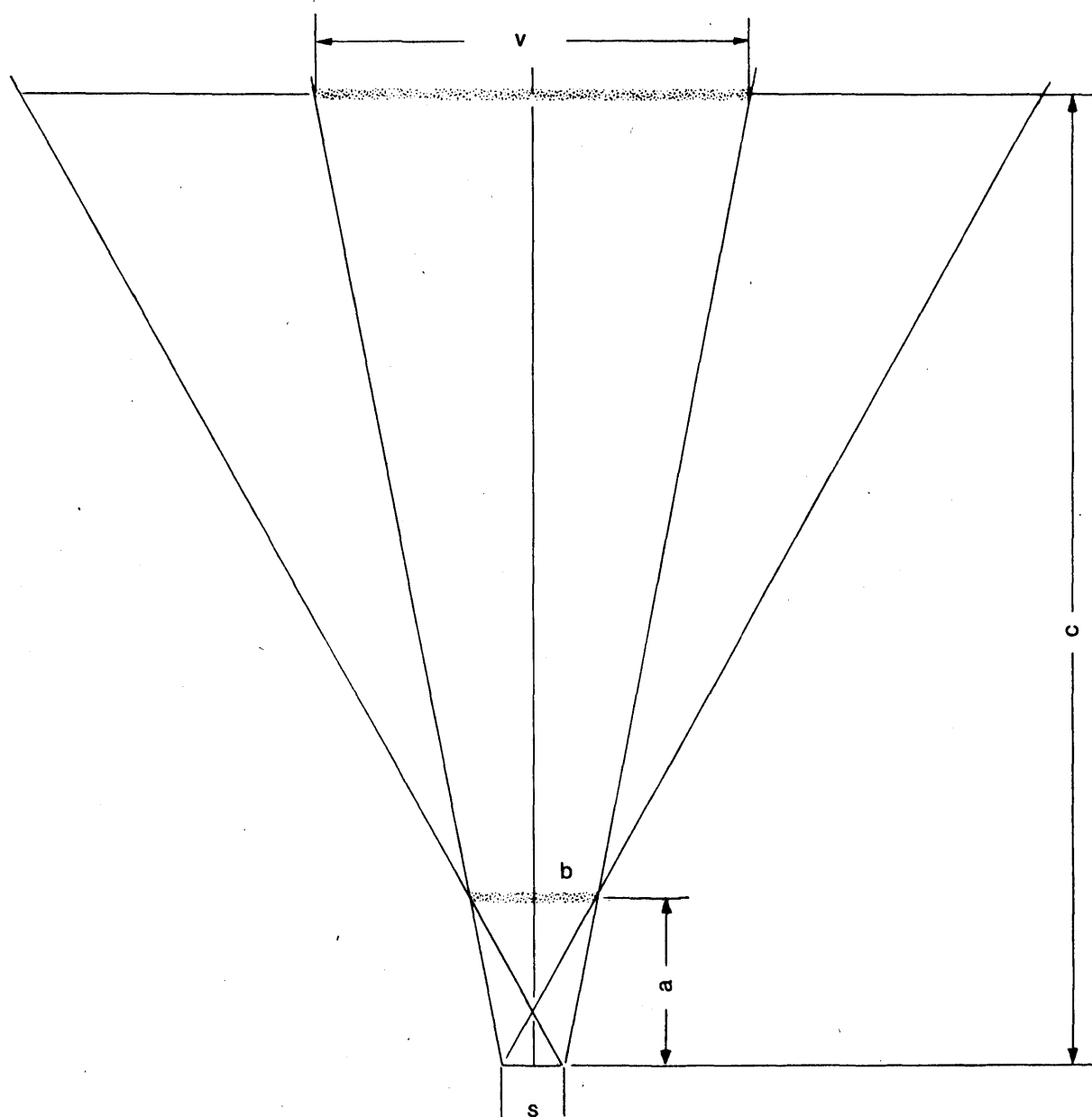
2.6.1. Tractors fitted with windscreens must also be equipped with motor-driven windscreen wipers and the area swept by these wipers must ensure an unobstructed forward view corresponding to a chord of the semi-circle of vision at least 8 m long within the sector of vision.

2.6.2. The rate of operation of the windscreen wipers must be at least 20 cycles per minute.



**Figure 1**

*Figure 2*



$$\frac{\frac{v}{2} - \frac{s}{2}}{c} = \frac{\frac{b}{2} - \frac{s}{2}}{a}$$

$$v = \frac{b - 65}{a} \cdot 12\,000 + 65$$

Figure 3

## THIRD COUNCIL DECISION

of 27 June 1974

on the equivalence of field inspections carried out in third countries on  
seed-producing crops

(74/348/EEC)

THE COUNCIL OF THE EUROPEAN COMMUNITIES,

Having regard to the Treaty establishing the  
European Economic Community;Having regard to Council Directive No  
66/400/EEC <sup>(1)</sup> of 14 June 1966 on the marketing of  
beet seed, as last amended by Directive No  
73/438/EEC <sup>(2)</sup>, and in particular Article 16 (1) (a)  
thereof;Having regard to Council Directive No  
66/401/EEC <sup>(3)</sup> of 14 June 1966, on the marketing of  
fodder plant seed, as last amended by Directive No  
73/438/EEC, and in particular Article 16 (1) (a)  
thereof;Having regard to Council Directive No  
66/402/EEC <sup>(4)</sup> of 14 June 1966 on the marketing of  
cereal seed, as last amended by Directive No  
73/438/EEC, and in particular Article 16 (1) (a)  
thereof;Having regard to Council Directive No  
69/208/EEC <sup>(5)</sup> of 30 June 1969 on the marketing of  
seed of oil and fibre plants, as last amended by  
Directive No 73/438/EEC, and in particular Article  
15 (1) (a) thereof;

Having regard to the proposal from the Commission;

Whereas there are rules on seed control in Australia,  
Czechoslovakia, New Zealand, Spain, Switzerland,  
the United States and Yugoslavia; whereas these  
rules provide for official field inspection to be carried  
out during the period of seed production;Whereas these rules and the manner in which they  
are applied have been reviewed and whereas thisreview has established that the prescribed field  
inspections satisfy the conditions laid down in Annex I  
to the abovementioned Directives;Whereas this Decision does not preclude Community  
determinations being revoked or extension of the  
period of their validity being refused, when the  
conditions on which they are based are not or cease  
to be satisfied; whereas, to this end, further practical  
information on seed produced in the abovementioned  
countries should be obtained by growing and  
checking samples of such seed in comparative  
Community tests;Whereas, on 5 October 1973, the Council of the  
Organization for Economic Cooperation and  
Development (OECD) extended the scope of its  
present scheme for the varietal certification of  
herbage seed moving in international trade to include  
certain crucifers and oil plants; whereas since this  
scheme will henceforth apply to swede, fodder kale  
and fodder radish species and to oil and fibre plants  
covered by Community Directives, it is appropriate  
to amend the special conditions laid down by the  
Council Decisions declaring equivalences;Whereas a further amendment is necessary owing to  
a transfer of powers within a national authority  
responsible for official seed control,

HAS ADOPTED THIS DECISION:

*Article 1*It is hereby determined that, where the special  
conditions laid down in the Annex to this Decision  
are satisfied, field inspections of crops producing seed  
of the 'certified seed' category carried out in the  
countries and by the authorities listed in the said  
Annex and in respect of the species specified therein  
satisfy the conditions laid down in Annex I to  
Directive No 66/400/EEC, 66/401/EEC, 66/402/EEC  
or 69/208/EEC.<sup>(1)</sup> OJ No 125, 11. 7. 1966, p. 2290/66.<sup>(2)</sup> OJ No L 356, 27. 12. 1973, p. 79.<sup>(3)</sup> OJ No 125, 11. 7. 1966, p. 2298/66.<sup>(4)</sup> OJ No 125, 11. 7. 1966, p. 2309/66.<sup>(5)</sup> OJ No L 169, 10. 7. 1969, p. 3.

*Article 2*

The Annex to First Council Decision No 72/292/EEC <sup>(1)</sup> of 20 July 1972 on the equivalence of field inspections carried out in third countries on seed-producing crops, shall be amended as follows:

1. Under reference numbers 1, 6, 10, 12 and 13 the figure '2' which appears in column 5 in respect of 'swede cabbage', 'fodder kale', 'fodder radish' and 'oil and fibre plants' shall be replaced by the figure '1'.
2. Under reference number 12, the words 'Ministerul Agriculturii si Silviculturii, Bucuresti', which appear in column 3, shall be replaced by the words 'Ministerul Agriculturii, Industrii Alimentare, Silviculturii si Apelor — Insectia de stat pentru calitatea semintelor si materialului saditor'.
3. Under point 4 of the 'Special conditions', the words 'or in English' shall be deleted.

*Article 3*

The Annex to Second Council Decision No 73/86/EEC <sup>(2)</sup> of 26 March 1973 on the equivalence of field inspections carried out in third countries on seed-producing crops, shall be amended as follows:

Under reference numbers 2, 4 and 6, the figure '2' which appears in column 5 in respect of 'swede cabbage', 'fodder kale', 'fodder radish' and 'oil and fibre plants' shall be replaced by the figure '1'.

*Article 4*

1. Article 1 shall apply until 30 June 1976:
  - from 1 July 1973, for swede, fodder kale, fodder radish and cereal species;
  - from 1 July 1974, for the other species.
2. Article 2, point 1 and Article 3 shall apply to seed-producing crops harvested on and after 1 July 1975. These provisions may also be applied to some seed-producing crops harvested prior to the abovementioned date.
3. Article 2, point 2 shall apply as from 1 September 1972.
4. Article 2, point 3 shall apply as from 1 January 1973.

*Article 5*

This Decision is addressed to the Member States.

Done at Luxembourg, 27 June 1974.

*For the Council*  
*The President*  
K. GSCHIEDLE

<sup>(1)</sup> OJ No L 186, 16. 8. 1972, p. 22.

<sup>(2)</sup> OJ No L 106, 20. 4. 1973, p. 18.

## ANNEX

Ref. No	Country	Authority	Species	Special conditions
1	2	3	4	5
1	Australia	Department of Primary Industries, Canberra	Fodder kale	1 or 2 (*); 3, 4, 5
2	Yugoslavia	<ul style="list-style-type: none"> <li>— Institut za poljoprivredna istraživanja (Institute of Agricultural Research), Novi Sad</li> <li>— Zavod za krmno bilje (Animal Feedingstuffs, Research Station), Kruševac</li> <li>— Institut za poljoprivredna istraživanja (Institute of Agricultural Research), Sarajevo</li> <li>— Institut za oplemenjivanje i proizvodnju bilja poljoprivrednog fakulteta (University Institute for Plant Improvement and Production), Zagreb</li> <li>— Poljoprivredni institut (Agricultural Institute), Osijek</li> <li>— Kmetijski institut Slovenije (Slovenian Agricultural Institute), Ljubljana</li> <li>— Zemjodelski institut (Agricultural Institute), Skopje</li> </ul>	<ul style="list-style-type: none"> <li>— Fodder kale, fodder radish</li> <li>— Oil and fibre plants (turnip rape, swede rape)</li> </ul>	<ul style="list-style-type: none"> <li>1 or 2 (*); 3, 4, 5</li> <li>1, 3, 4, 5</li> </ul>
3	New Zealand	Department of Agriculture	Fodder kale	1 or 2 (*); 3, 4, 5
4	Switzerland	<ul style="list-style-type: none"> <li>— Station fédéral de recherches agromomiques, Lausanne</li> <li>— Eidgenössische Landwirtschaftliche Forschungsanstalt Zürich</li> </ul>	Cereals, except canary grass, maize and rice	1, 3, 4, 5
5	Spain	Instituto Nacional de Semillas y Plantas de Vivero, Madrid	<ul style="list-style-type: none"> <li>— Beet</li> <li>— Cereals, except rye, canary grass, maize and rice</li> <li>— Swede, fodder kale, fodder radish</li> <li>— Oil and fibre plants (swede rape, sunflower, soya beans)</li> </ul>	<ul style="list-style-type: none"> <li>1, 3, 5, 6</li> <li>1, 3, 4, 5</li> <li>1 or 2 (*); 3, 4, 5</li> <li>1, 3, 4, 5</li> </ul>
6	Czechoslovakia	Ústředni Kontrolní a zkušební ústav zemědělský, Praha	<ul style="list-style-type: none"> <li>— Beet</li> <li>— Grass and legume species subject to national rules on varietal control</li> <li>— Oil and fibre plants (sunflower)</li> </ul>	<ul style="list-style-type: none"> <li>1, 3, 5, 6</li> <li>1, 3, 4, 5</li> <li>1, 3, 4, 5</li> </ul>

(\*) Solely in the case of seed-producing crops harvested before 1 July 1975.

Ref. No	Country	Authority	Species	Special conditions
1	2	3	4	5
7	United States of America	<ul style="list-style-type: none"> <li>— Alabama Crop Improvement Association, Inc.</li> <li>— Alaska Crop Improvement Association</li> <li>— Arizona Crop Improvement Association</li> <li>— Arkansas State Plant Board, Division of Seed Certification</li> <li>— California Crop Improvement Association</li> <li>— Colorado Seed Growers' Association</li> <li>— Delaware Crop Improvement Association</li> <li>— Florida Department of Agriculture</li> <li>— Georgia Crop Improvement Association, Inc.</li> <li>— Idaho Crop Improvement Association Inc.</li> <li>— Illinois Crop Improvement Association, Inc.</li> <li>— Indiana Crop Improvement Association, Inc.</li> <li>— Iowa Crop Improvement Association</li> <li>— Kansas Crop Improvement Association</li> <li>— Kentucky Seed Improvement Association</li> <li>— Louisiana Department of Agriculture, Division of Entomology</li> <li>— Maine Department of Agriculture, Division of Plant Industry</li> <li>— Maryland State Board of Agriculture, Department of Agronomy</li> <li>— Michigan Crop Improvement Association</li> <li>— Minnesota Crop Improvement Association</li> <li>— Mississippi Seed Improvement Association</li> <li>— Missouri Seed Improvement Association</li> <li>— Montana Seed Growers' Association</li> <li>— Nebraska Crop Improvement Association</li> <li>— Nevada Department of Agriculture, Division of Plant Industry</li> </ul>	<ul style="list-style-type: none"> <li>— Sugar beet</li> <li>— Cereals, except canary grass and maize</li> <li>— Swede, fodder kale, fodder radish</li> <li>— Oil and fibre plants subject to national rules on varietal control</li> </ul>	<ul style="list-style-type: none"> <li>1, 3, 5, 6</li> <li>1, 3, 4, 5</li> <li>1 or 2 (*); 3, 4, 5</li> <li>1, 3, 4, 5</li> </ul>

(\*) Solely in the case of seed-producing crops harvested before 1 July 1975.

Ref. No	Country	Authority	Species	Special conditions
1	2	3	4	5
7	United States of America (cont'd)	<ul style="list-style-type: none"> <li>— New Jersey Department of Agriculture, Division of Plant Industry</li> <li>— New Mexico Crop Improvement Association</li> <li>— New York Seed Improvement Coop., Inc.</li> <li>— North Carolina Crop Improvement Association Inc.</li> <li>— North Dakota State Seed Department</li> <li>— Ohio Seed Improvement Association</li> <li>— Oklahoma Crop Improvement Association</li> <li>— Oregon State University, Extension Service,</li> <li>— Pennsylvania State Department of Agriculture, Bureau of Plant Industry</li> <li>— South Carolina Crop Improvement Association</li> <li>— South Dakota Crop Improvement Association</li> <li>— Tennessee Crop Improvement Association</li> <li>— Texas Department of Agriculture</li> <li>— Utah Crop Improvement Association</li> <li>— Utah Agricultural Experiment Station</li> <li>— Vermont Department of Agriculture</li> <li>— Virginia Crop Improvement Association</li> <li>— Washington State Crop Improvement Association Inc.</li> <li>— Washington State Department of Agriculture, Seed Branch</li> <li>— West Virginia Associated Crop Growers' Association</li> <li>— Wisconsin Crop Improvement Association</li> <li>— Wyoming Seed Certification Service</li> </ul>	<ul style="list-style-type: none"> <li>— Sugar beet</li> <li>— Cereals, except canary grass and maize</li> <li>— Swede, fodder kale, fodder radish</li> <li>— Oil and fibre plants subject to national rules on varietal control</li> </ul>	<ul style="list-style-type: none"> <li>1, 3, 5, 6</li> <li>1, 3, 4, 5</li> <li>1 or 2 (*); 3, 4, 5</li> <li>1, 3, 4, 5</li> </ul>

(\*) Solely in the case of seed-producing crops harvested before 1 July 1975.



### Special conditions

1. Field inspection shall be carried out in accordance with national rules for the application of the scheme for the varietal certification of seed moving in international trade of the Organization for Economic Cooperation and Development (OECD).
  2. Field inspection shall be carried out in accordance with national rules for the varietal control of seed.
  3. Field inspection shall be carried out by State authorities or by any legal person, whether governed by public or by private law, acting under the responsibility of such authorities, provided that such person derives no private gain from the result of the inspection.
  4. Harvested seed shall be packed in officially sealed packages which bear an official label giving the following information:
    - (a) authority responsible and country,
    - (b) species,
    - (c) variety,
    - (d) reference number of the basic seed and name of the Member State which certified the seed,
    - (e) reference number of the lot,
    - (f) declared net or gross weight,
    - (g) the words 'non-certified seed'.All information shall be given in at least one of the official languages of the European Communities.
  5. An official notice shall give the following information:
    - area cultivated,
    - quantity of harvested seed,
    - an attestation that the crops from which the seed comes have satisfied an official field inspection.
  6. Harvested seed shall be packed in an officially sealed package bearing the special label prescribed by the OECD for seed which has not been finally certified: this label shall give the following additional information:
    - reference number of the basic seed,
    - name of the Member State which certified the seed.
-

## THIRD COUNCIL DECISION

of 27 June 1974

on the equivalence of seed produced in third countries

(74/349/EEC)

THE COUNCIL OF THE EUROPEAN COMMUNITIES,

Having regard to the Treaty establishing the European Economic Community;

Having regard to Council Directive No 66/400/EEC <sup>(1)</sup> of 14 June 1966 on the marketing of beet seed, as last amended by Directive No 73/438/EEC <sup>(2)</sup>, and in particular Article 16 (1) (b) thereof;

Having regard to Council Directive No 66/401/EEC <sup>(3)</sup> of 14 June 1966 on the marketing of fodder plant seed, as last amended by Directive No 73/438/EEC, and in particular Article 16 (1) (b) thereof;

Having regard to Council Directive No 66/402/EEC <sup>(4)</sup> of 14 June 1966 on the marketing of cereal seed, as last amended by Directive No 73/438/EEC, and in particular Article 16 (1) (b) thereof;

Having regard to Council Directive No 69/208/EEC <sup>(5)</sup> of 30 June 1969 on the marketing of seed of oil and fibre plants, as last amended by Directive No 73/438/EEC, and in particular Article 15 (1) (b) thereof;

Having regard to the proposal from the Commission;

Whereas there are rules on seed control in Australia, Czechoslovakia, New Zealand, Spain, Switzerland, Yugoslavia and the United States;

Whereas a review of these rules and the manner in which they are applied has demonstrated that the conditions governing seed harvested and controlled in these countries afford the same assurances as

regards the seed's characteristics, identity, examination, marking and control, as do the conditions applicable to seed harvested and controlled within the Community;

Whereas, if it becomes apparent that the conditions on which Community determinations are based are not or are no longer satisfied, this Decision does not prevent these determinations being revoked or an extension of the period of their validity being refused; whereas for this purpose further practical information on seed produced in the abovementioned countries should therefore be obtained by growing and checking samples of such seed in comparative Community tests;

Whereas, on 5 October 1973 the Council of the Organization for Economic Cooperation and Development (OECD) extended the scope of its present scheme for the varietal certification of herbage seed moving in international trade to include certain crucifers and oil plants; whereas since this scheme will henceforth apply to swede fodder kale and fodder radish species and to oil and fibre plants covered by Community Directives, it is appropriate to amend the special conditions laid down by Council Decisions declaring equivalences;

Whereas further amendments are necessary owing to a transfer of powers within the national authorities responsible for official seed control,

HAS ADOPTED THIS DECISION:

*Article 1*

It is hereby declared that, where the special conditions laid down in the Annex are satisfied, seed harvested in the countries and officially controlled by the authorities listed in the said Annex and belonging to the species and categories specified therein is equivalent to seed of the corresponding categories harvested within the Community and complying with Directive No 66/400/EEC, 66/401/EEC, 66/402/EEC or 69/208/EEC.

<sup>(1)</sup> OJ No 125, 11. 7. 1966, p. 2290/66.

<sup>(2)</sup> OJ No L 356, 27. 12. 1973, p. 79.

<sup>(3)</sup> OJ No L 125, 11. 7. 1966, p. 2298/66.

<sup>(4)</sup> OJ No 125, 11. 7. 1966, p. 2309/66.

<sup>(5)</sup> OJ No L 169, 10. 7. 1969, p. 3.

### Article 2

The Annex to First Council Decision No 72/293/EEC <sup>(1)</sup> of 20 July 1972 on the equivalence of seed produced in third countries, shall be amended as follows:

1. Under reference number 20, the following authority shall be inserted in column 3 in respect of beet and legume species:

'Institut za oplemenjivanje i proizvodnju bilja poljoprivrednog fakulteta (University Institute for Plant Improvement and Production), Zagreb.'

2. Under reference numbers 1, 6, 10, 12 and 13, the figures '2' and '1', which appear in column 7 in respect of 'swede cabbage', 'fodder kale' and 'fodder radish' and 'oil and fibre plants', shall be replaced, throughout, by the figures '1' and '5' respectively.

3. Under reference number 7, the entry in column 3 in respect of 'swede cabbage, fodder kale' and 'oil and fibre plants' shall be replaced by:

'Bundesanstalt für Pflanzenbau und Samenprüfung'.

4. Under reference number 10, the entry in column 3 in respect of 'swede cabbage, fodder kale, fodder radish' shall be replaced by:

— 'Wojewódzkich Inspektoratów Kontroli Materiału Siewnego (WIKMS)

(District Inspection Authorities for Seed Control):

— Bydgoszcz

— Gdansk

— Kraków

— Poznań

— Warszawa

— Wrocław

— Instytut Kodowli i Aklimatyzacji Róślin, Zakład Metodyki Oceny Nasion (Seed Testing Station of the Plant Improvement Institute), Sandormierz.'

5. Under reference number 1, the words 'Elite' and 'Original-Hochzucht' and 'Original-Erhaltungszucht', which appear in column 5 in respect

of 'swede cabbage', 'fodder kale' and 'oil and fibre plants', shall be replaced by the words 'Basic seed' and 'Certified seed' respectively.

6. Under reference number 10, the words 'Elita hodowlana' and 'Oryginal', which appear in column 5 in respect of 'swede cabbage', 'fodder kale' and 'fodder radish', shall be replaced by the words 'Basic seed' and 'Certified seed' respectively.

7. Under reference number 12, the words 'Ministerul Agriculturii și Silviculturii, București', which appear in column 3, shall be replaced by the words 'Ministerul Agriculturii, Industriei Alimentare, Silviculturii și Apelor — Inspectorat de stat pentru calitatea semintelor și materialului săditor'.

8. Under reference number 12, in column 5, the words 'Elite' and 'Originale', in respect of 'swede cabbage', 'fodder radish' and 'oil and fibre plants', shall be replaced by the words 'Basic seed' and 'Certified seed' respectively.

9. Under reference number 13, the word 'Foundation' which appears in column 5 in respect of 'fodder radish' and 'oil and fibre plants', shall be replaced by the word 'Basic'.

10. Under reference number 6, the words 'Elit', '1. fokú szaporítás', '2. fokú szaporítás' and '3. fokú szaporítás' which appear in column 5 in respect of 'oil and fibre plants', shall be replaced by the words 'Basic seed', 'Certified seed, 1st generation', 'Certified seed, 2nd generation' and 'Certified seed, 3rd generation' respectively.

11. In point 10 of the 'Special conditions', the words 'or in English' shall be deleted.

### Article 3

The Annex to Second Council Decision No 73/87/EEC <sup>(2)</sup> of 26 March 1973 on the equivalence of seed produced in third countries, shall be amended as follows:

1. Under reference numbers 2, 4 and 7, the figures '2' and '7', which appear in column 7 in respect of 'swede cabbage, fodder kale, fodder radish' and 'oil and fibre plants', shall be replaced by the figures '1' and '5' respectively.

<sup>(1)</sup> OJ No L 186, 16. 8. 1972, p. 30.

<sup>(2)</sup> OJ No L 106, 20. 4. 1973, p. 21.

2. Under reference number 2, in column 5, the text of the last four indents shall be replaced by the following text:

- Basic seed
- Certified seed
- Basic seed
- Certified seed.'

3. Under reference number 4, the words 'Class B' and 'Class C', which appear in column 5 in respect of 'swede cabbage, fodder kale', and 'oil and fibre plants' shall be replaced by the words 'Basic seed' and 'Certified seed' respectively.

4. Under reference number 7, the words 'Elit' and 'Certificalt Vetömag', which appear in column 5, shall be replaced by the words 'Basic seed' and 'Certified seed' respectively.

#### *Article 4*

1. Article 1 shall apply until 30 June 1976:

- from 1 July 1973, for swede, fodder kale, fodder radish and cereal species;

— from 1 July 1974 for the other species.

2. Article 2, point 7 shall apply from 1 September 1972.

3. Article 2, point 11 shall apply from 1 January 1973.

4. Article 2, points 1 to 6 and 8, 9 and 10, and Article 3 shall apply to seed harvested on and after 1 July 1975. These provisions may also be applied to seed harvested prior to the abovementioned date.

#### *Article 5*

This Decision is addressed to the Member States.

Done at Luxembourg, 27 June 1974.

*For the Council*

*The President*

K. GSCHIEDLE

## ANNEX

Ref. No	Country	Authority	Species	Categories		Special conditions
				in the Country	in the Community	
1	2	3	4	5	6	7
1	Australia	Department of Primary Industries, Canberra	Fodder kale	— Basic seed — Certified seed	— Basic seed — Certified seed	1 or 2 (*); 3; 5 or 7 (*); 8, 9, 10 1 or 2 (*); 3; 5 or 7 (*); 8, 9, 10
2	Yugoslavia	— Institut za poljoprivredna istraživanja (Institute of Agricultural Research), Novi Sad — Institut za oplemenjivanje i proizvodnju bilja poljoprivrednog fakulteta (University Institute for Plant Improvement and Production), Zagreb	— Fodder kale, fodder radish — Oil and fibre plants (swede rape, turnip rape)	— Basic seed — Certified seed — Basic seed — Certified seed, 1st generation	— Basic seed — Certified seed — Basic seed — Certified seed	1 or 2 (*); 3; 5 or 7 (*); 8, 9, 10 1 or 2 (*); 3; 5 or 7 (*); 8, 9, 10 1, 3, 5, 8, 9, 10 1, 3, 5, 8, 9, 10
3	New Zealand	Department of Agriculture	Fodder kale	— Basic seed — Certified seed	— Basic seed — Certified seed	1 or 2 (*); 3; 5 or 7 (*); 8, 9, 10 1 or 2 (*); 3; 5 or 7 (*); 8, 9, 10
4	Switzerland	— Station fédérale de recherches agronomiques, Lausanne — Eidgenössische Landwirtschaftliche Forschungsanstalt, Zürich	Cereals, except canary grass, maize and rice	— Basic seed — Certified seed, 1st generation — Certified seed, 2nd generation (except rye)	— Basic seed — Certified seed; Certified seed, 1st generation — Certified seed, 2nd generation (except rye)	1, 3, 5, 8, 9, 10 1, 3, 5, 8, 9, 10 1, 3, 5, 8, 9, 10
5	Spain	Instituto Nacional de Semillas y Plantas de Vivero, Madrid	— Beet — Cereals, except rye, canary grass, maize and rice	— Certified seed — Basic seed — Certified seed, 1st generation — Certified seed, 2nd generation	— Certified seed — Basic seed — Certified seed; Certified seed, 1st generation — Certified seed, 2nd generation	1, 3, 4, 6, 8, 9, 10 1, 3, 5, 8, 9, 10 1, 3, 5, 8, 9, 10 1, 3, 5, 8, 9, 10

(\*) Solely in the case of seed harvested before 1 July 1975.

Ref. No	Country	Authority	Species	Categories		Special conditions
				in the Country	in the Community	
1	2	3	4	5	6	7
5	Spain (cont'd)	Instituto Nacional de Semillas y Plantas de Vivero, Madrid	— Swede, fodder kale, fodder radish	— Basic seed	— Basic seed	1 or 2 (*); 3; 5 or 7 (*); 8, 9, 10
			— Oil and fibre plants (turnip rape, sunflower, soya bean)	— Certified seed	— Certified seed,	1 or 2 (*); 3; 5 or 7 (*); 8, 9, 10
				— Basic seed	— Basic seed	1, 3, 5, 8, 9, 10
				— Certified seed, 1st generation	— Certified seed; Certified seed, 1st generation	1, 3, 5, 8, 9, 10
6	Czechoslovakia	Ústředni Kontrolni a zkušební ústav zemědělský, Praha	— Beet	— Basic seed	— Basic seed	1, 3, 6, 8, 9, 10
			— Grass and legume species subject to national rules on varietal control	— Certified seed	— Certified seed	1, 3, 6, 8, 9, 10
				— Basic seed	— Basic seed	1, 3, 5, 8, 9, 10
				— Certified seed, 1st generation	— Certified seed, 1st generation	1, 3, 5, 8, 9, 10
				— Certified seed, 2nd generation and later generations	— Certified seed, subsequent generations	1, 3, 5, 8, 9, 10
				— Basic seed	— Basic seed	1, 3, 5, 8, 9, 10
				— Certified seed, 1st generation	— Certified seed	1, 3, 5, 8, 9, 10
7	United States of America	— Alabama Crop Improvement Association Inc.	— Sugar beet	— Basic seed	— Basic seed	1, 3, 6, 8, 9, 10
		— Alaska Crop Improvement Association		— Certified seed	— Certified seed	1, 3, 6, 8, 9, 10
		— Arizona Crop Improvement Association	— Cereals, except canary grass and maize	— Basic seed	— Basic seed	1, 3, 5, 8, 9, 10
		— Arkansas State Plant Board, Division of Seed Certification		— Certified seed, 1st generation	— Certified seed; Certified seed, 1st generation	1, 3, 5, 8, 9, 10
		— California Crop Improvement Association	— Swede, fodder kale, fodder radish	— Certified seed, 2nd generation (except rye)	— Certified seed, 2nd generation (except rye)	1, 3, 5, 8, 9, 10
		— Colorado Seed Growers' Association		— Basic seed	— Basic seed	1 or 2 (*); 3; 5 or 7 (*); 8, 9, 10
		— Delaware Crop Improvement Association	— Oil and fibre plants subject to national rules on varietal control	— Certified seed	— Certified seed	1 or 2 (*); 3; 5 or 7 (*); 8, 9, 10
		— Florida Department of Agriculture		— Basic seed	— Basic seed	1, 3, 5, 8, 9, 10
				— Certified seed, 1st generation	— Certified seed; Certified seed, 1st generation	1, 3, 5, 8, 9, 10

(\*) Solely in the case of seed harvested before 1 July 1975.

Ref. No	Country	Authority	Species	Categories		Special conditions
				in the Country	in the Community	
1	2	3	4	5	6	7
7	United States of America ( <i>cont'd</i> )	— Georgia Crop Improvement Association, Inc.				
		— Idaho Crop Improvement Association, Inc.				
		— Illinois Crop Improvement Association, Inc.				
		— Indiana Crop Improvement Association, Inc.				
		— Iowa Crop Improvement Association				
		— Kansas Crop Improvement Association				
		— Kentucky Seed Improvement Association	— Sugar beet	— Basic seed	— Basic seed	1, 3, 6, 8, 9, 10
				— Certified seed	— Certified seed	1, 3, 6, 8, 9, 10
		— Louisiana Department of Agriculture, Division of Entomology	— Cereals, except canary grass and maize	— Basic seed	— Basic seed	1, 3, 5, 8, 9, 10
				— Certified seed, 1st generation	— Certified seed; Certified seed, 1st generation	1, 3, 5, 8, 9, 10
		— Maine Department of Agriculture, Division of Plant Industry		— Certified seed, 2nd generation (except rye)	— Certified seed, 2nd generation (except rye)	1, 3, 5, 8, 9, 10
		— Maryland State Board of Agriculture, Department of Agronomy	— Swede, fodder kale, fodder radish	— Basic seed	— Basic seed	1 or 2 (*); 3; 5 or 7 (*); 8, 9, 10
				— Certified seed	— Certified seed	1 or 2 (*); 3; 5 or 7 (*); 8, 9, 10
		— Michigan Crop Improvement Association	— Oil and fibre plants subject to national rules on varietal control	— Basic seed	— Basic seed	1, 3, 5, 8, 9, 10
				— Certified seed, 1st generation	— Certified seed; Certified seed, 1st generation	1, 3, 5, 8, 9, 10
		— Minnesota Crop Improvement Association				
		— Mississippi Seed Improvement Association				
		— Missouri Seed Improvement Association				
		— Montana Seed Growers' Association				
		— Nebraska Crop Improvement Association				
		— Nevada Department of Agriculture, Division of Plant Industry				

(\*) Solely in the case of seed harvested before 1 July 1975.

Ref. No	Country	Authority	Species	Categories		Special conditions
				in the Country	in the Community	
1	2	3	4	5	6	7
7	United States of America (cont'd)	— New Jersey Department of Agriculture, Division of Plant Industry				
		— New Mexico Crop Improvement Association				
		— New York Seed Improvement Coop., Inc.				
		— North Carolina Crop Improvement Association Inc.				
		— North Dakota State Seed Department				
		— Ohio Seed Improvement Association	— Sugar beet	— Basic seed	— Basic seed	1, 3, 6, 8, 9, 10
				— Certified seed	— Certified seed	1, 3, 6, 8, 9, 10.
		— Oklahoma Crop Improvement Association	— Cereals, except canary grass and maize	— Basic seed	— Basic seed	1, 3, 5, 8, 9, 10
				— Certified seed, 1st generation	— Certified seed; Certified seed, 1st generation	1, 3, 5, 8, 9, 10
		— Oregon State University, Extension Service		— Certified seed, 2nd generation (except rye)	— Certified seed, 2nd generation (except rye)	1, 3, 5, 8, 9, 10
		— Pennsylvania State Department of Agriculture, Bureau of Plant Industry	— Swede, fodder kale, fodder radish	— Basic seed	— Basic seed	1 or 2 (*); 3; 5 or 7 (*); 8, 9, 10
				— Certified seed	— Certified seed	1 or 2 (*); 3; 5 or 7 (*); 8, 9, 10
		— South Carolina Crop Improvement Association	— Oil and fibre plants subject to national rules on varietal control	— Basic seed	— Basic seed	1, 3, 5, 8, 9, 10
				— Certified seed, 1st generation	— Certified seed; Certified seed, 1st generation	1, 3, 5, 8, 9, 10
		— South Dakota Crop Improvement Association				
		— Tennessee Crop Improvement Association				
		— Texas Department of Agriculture				
		— Utah Crop Improvement Association				
		— Utah Agricultural Experiment Station				
		— Vermont Department of Agriculture				

(\*) Solely in the case of seed harvested before 1 July 1975.



Ref. No	Country	Authority	Species	Categories		Special conditions
				in the Country	in the Community	
1	2	3	4	5	6	7
7	United States of America ( <i>cont'd</i> )	— Virginia Crop Improvement Association	— Sugar beet	— Basic seed	— Basic seed	1, 3, 6, 8, 9, 10
		— Washington State Crop Improvement Association Inc.		— Certified seed	— Certified seed	1, 3, 6, 8, 9, 10
		— Washington State Department of Agriculture, Seed Branch		— Basic seed	— Basic seed	1, 3, 5, 8, 9, 10
		— Washington State Department of Agriculture, Seed Branch		— Certified seed, 1st generation	— Certified seed; Certified seed, 1st generation	1, 3, 5, 8, 9, 10
		— West Virginia Associated Growers' Association	— Swede, fodder kale, fodder radish	— Certified seed, 2nd generation (except rye)	— Certified seed, 2nd generation (except rye)	1, 3, 5, 8, 9, 10
		— Wisconsin Crop Improvement Association		— Basic seed	— Basic seed	1 or 2 (*); 3; 5 or 7 (*); 8, 9, 10
		— Wyoming Seed Certification Service	— Oil and fibre plants subject to national rules on varietal control	— Certified seed	— Certified seed	1 or 2 (*); 3; 5 or 7 (*); 8, 9, 10
				— Basic seed	— Basic seed	1, 3, 5, 8, 9, 10
				— Certified seed, 1st generation	— Certified seed; Certified seed, 1st generation	1, 3, 5, 8, 9, 10

(\*) Solely in the case of seed harvested before 1 July 1975.

### Special conditions

1. Seed shall be officially certified and its packages officially sealed and marked in accordance with the scheme for the varietal certification of seed moving in international trade of the Organization for Economic Cooperation and Development (OECD). The quality of the seed shall meet the requirements of Community rules.
2. Seed shall be officially certified and its packages officially sealed and marked in accordance with national provisions. The quality of the seed shall meet the requirements of Community rules.
3. Field inspection shall be carried out by State authorities or by any legal person, whether governed by public or by private law, acting under the responsibility of such authorities, provided that such person derives no private gain from the result of the inspection.
4. Basic seed shall have been officially certified within the Community.

5. The official label shall give the following additional information:

- (a) date of official sealing,
- (b) a statement that the seed complies with EEC rules and standards.

This information may also appear on another official label which, in addition, shall give the name of the authority and of the country.

6. The official label shall give the following additional information:

- (a) date of official sealing,
- (b) if 4 is applicable, a statement that the basic seed has been certified within the Community.

This information may also appear on another official label which, in addition, shall give the name of the authority and of the country.

7. The official label shall give the following minimum information:

- (a) certification authority and country,
- (b) a statement that the seed complies with EEC rules and standards,
- (c) reference number of the lot,
- (d) species,
- (e) variety or, in the case of hybrids, inbred line,
- (f) category (basic seed or certified seed),
- (g) country of production,
- (h) declared net or gross weight,
- (i) date of official sealing,
- (j) in the case of certified seed of the second and subsequent generations, number of generations from basic seed,
- (k) in the case of hybrid varieties:
  - the word 'hybrid',
  - in the case of seed of the category 'certified seed' which has not been certified within the Community, a statement that the basic seed has been officially examined.

The colour of the label shall be:

- white for basic seed,
- blue for certified seed and certified seed of the first generation,
- red for certified seed of subsequent generations.

8. Any chemical treatment of the seed shall be noted either on the official label or on a special label and on the package or inside it.

9. An official notice placed inside the package shall give at least the reference number of the lot, the species and the variety; in the case of beet seed it shall also be stated, where appropriate, whether the seed is monogerm or precision seed.

This notice is not necessary if the minimum information is printed indelibly on the package.

10. All information required for official labels, official notices and packages shall be given in at least one of the official languages of the European Communities.

---

## COUNCIL DECISION

of 27 June 1974

amending Decision No 73/83/EEC on the equivalence of field inspections carried out on seed-producing crops in Denmark, Ireland and the United Kingdom and Decision No 73/84/EEC on the equivalence of seed produced in Denmark, Ireland and the United Kingdom

(74/350/EEC)

THE COUNCIL OF THE EUROPEAN COMMUNITIES,

Having regard to the Treaty establishing European Economic Community;

Having regard to Council Directive No 66/401/EEC <sup>(1)</sup> of 14 June 1966 on the marketing of fodder seed, as last amended by Directive No 73/438/EEC <sup>(2)</sup>, and in particular Article 16 (1) thereof;

Having regard to Council Directive No 69/208/EEC <sup>(3)</sup> of 30 June 1969 on the marketing of oil and fibre plants, as last amended by Directive No 73/438/EEC, and in particular Article 15 (1) thereof;

Having regard to the proposal from the Commission;

Whereas, in Decision No 73/83/EEC <sup>(4)</sup> of 26 March 1973 on the equivalence of field inspections carried out on seed producing crops in Denmark, Ireland and the United Kingdom, and Decision No 73/84/EEC <sup>(5)</sup> of 26 March 1973 on the equivalence of seed produced in Denmark, Ireland and the United Kingdom, the Council declared that, with regard to swede, fodder kale, fodder radish and oil and fibre plants, the national seed control schemes of the abovementioned Member States were equivalent to the schemes in the Community as originally constituted;

Whereas, on 5 October 1973, the Council of the Organization for Economic Cooperation and Development (OECD) extended the scope of its present scheme for the varietal certification of herbage seed moving in international trade to include certain crucifers and oil plants; whereas since this scheme will henceforth apply to swede, fodder kale

and fodder radish species and to oil and fibre plants covered by Community Directives, it is appropriate to amend the special conditions laid down by the Council Decisions declaring equivalences,

HAS ADOPTED THIS DECISION:

*Article 1*

The Annex to Decision No 73/83/EEC shall be amended as follows:

Under reference numbers 1 and 3, the figure '2', which appears in column 5 in respect of 'swede cabbage, fodder kale, fodder radish' and 'oil and fibre plants', shall be replaced by the figure '1'.

*Article 2*

The Annex to Decision No 73/84/EEC shall be amended as follows:

1. Under reference numbers 1 and 3, the figures '2' and '7', which appear in column 7 in respect of 'swede cabbage, fodder kale, fodder radish' and 'oil and fibre plants', shall be replaced by the figures '1' and '5' respectively.
2. Under reference number 1, the words 'Stamfrø' and 'Brugsfrø', which appear in column 5 in respect of 'swede cabbage, fodder kale, fodder radish and oil and fibre plants', shall be replaced by the words 'Basic seed' and 'Certified seed' respectively.

*Article 3*

This Decision shall apply to seed harvested on and

<sup>(1)</sup> OJ No 125, 11. 7. 1966, p. 2298/66.

<sup>(2)</sup> OJ No L 356, 27. 12. 1973, p. 79.

<sup>(3)</sup> OJ No L 169, 10. 7. 1969, p. 3.

<sup>(4)</sup> OJ No L 106, 20. 4. 1973, p. 9.

<sup>(5)</sup> OJ No L 106, 20. 4. 1973, p. 12.

after 1 July 1975. It may also be applied to seed harvested prior to the abovementioned date.

Done at Luxembourg, 27 June 1974.

*Article 4*

This Decision is addressed to the Member States.

*For the Council*

*The President*

K. GSCHIEDLE

---

#### NOTICE TO READERS

Readers' attention is drawn to the invitation to tender for the printing of the *Official Journal of the European Communities* from 1 January 1975. This invitation may be found in OJ No C 82 of 15 July 1974.