

# Official Journal

## of the European Union

L 121



English edition

Legislation

Volume 53

18 May 2010

Contents

II *Non-legislative acts*

## REGULATIONS

★ <b>Commission Regulation (EU) No 421/2010 of 17 May 2010 amending Regulation (EU) No 53/2010 as regards catch limits for capelin in Greenland waters</b> .....	1
Commission Regulation (EU) No 422/2010 of 17 May 2010 establishing the standard import values for determining the entry price of certain fruit and vegetables .....	3
Commission Regulation (EU) No 423/2010 of 17 May 2010 amending the representative prices and additional import duties for certain products in the sugar sector fixed by Regulation (EC) No 877/2009 for the 2009/10 marketing year .....	5
Commission Regulation (EU) No 424/2010 of 17 May 2010 amending Regulation (EU) No 419/2010 fixing the import duties in the cereals sector applicable from 16 May 2010 .....	7

Price: EUR 3

(Continued overleaf)

EN

Acts whose titles are printed in light type are those relating to day-to-day management of agricultural matters, and are generally valid for a limited period.

The titles of all other acts are printed in bold type and preceded by an asterisk.

DECISIONS

2010/276/EU:

- ★ **Commission Decision of 10 May 2010 amending Annexes I and II to Decision 2009/861/EC on transitional measures under Regulation (EC) No 853/2004 of the European Parliament and of the Council as regards the processing of non-compliant raw milk in certain milk processing establishments in Bulgaria** (*notified under document C(2010) 2953*) <sup>(1)</sup> ..... 10

2010/277/EU:

- ★ **Commission Decision of 12 May 2010 amending Decision 2009/821/EC as regards the lists of border inspection posts and veterinary units in Traces** (*notified under document C(2010) 3040*) <sup>(1)</sup> 16



---

<sup>(1)</sup> Text with EEA relevance

## II

(Non-legislative acts)

## REGULATIONS

## COMMISSION REGULATION (EU) No 421/2010

of 17 May 2010

amending Regulation (EU) No 53/2010 as regards catch limits for capelin in Greenland waters

THE EUROPEAN COMMISSION,

11 550 tonnes to the Union in accordance with the share fixed under the Protocol, to be fished until 30 April 2010.

Having regard to the Treaty on the Functioning of the European Union,

Having regard to Council Regulation (EU) No 53/2010 of 14 January 2010 fixing for 2010 the fishing opportunities for certain fish stocks and groups of fish stocks, applicable in EU waters and, for EU vessels, in waters where catch limitations are required and amending Regulations (EC) No 1359/2008, (EC) No 754/2009, (EC) No 1226/2009 and (EC) No 1287/2009 <sup>(1)</sup>, and in particular Article 5(4) thereof,

Whereas:

(1) The Union's fishing opportunities for capelin in Greenland waters of ICES zones V and XIV are provisionally laid down in Annex IB to Regulation (EU) No 53/2010 and amount to 0 tonnes. According to Article 5(4) of that Regulation, the Commission is to fix those fishing opportunities as soon as the amount of total allowable catches (TAC) for that fishery has been established.

(2) Under the Protocol setting out the fishing opportunities and financial contribution provided for in the Fisheries Partnership Agreement between the European Union on the one hand, and the Government of Denmark and the Home Rule Government of Greenland, on the other <sup>(2)</sup>, the Union is to receive 7,7 % of the TAC for capelin in Greenland waters of ICES zones V and XIV.

(3) The Commission received information from the Greenland authorities that the TAC has been fixed at 150 000 tonnes and that Greenland will allocate

(4) Having regard to the Agreed Record of Conclusions of fisheries consultations between the Union and Iceland for 2009 signed on 16 October 2009 and in particular the outstanding quantity of 21 624 tonnes of capelin due to Iceland from the previous fishing season, it is appropriate to transfer the fishing opportunities for capelin available to the Union for 2010 to Iceland.

(5) Annex IB to Regulation (EU) No 53/2010 should therefore be amended accordingly.

(6) In order to avoid interruption of fishing activities, this Regulation should enter into force immediately after its publication and apply from 1 January 2010,

HAS ADOPTED THIS REGULATION:

## Article 1

In Annex IB to Regulation (EU) No 53/2010, the entry concerning the species capelin in Greenland waters of V and XIV is replaced by the following:

Species: Capelin <i>Mallotus villosus</i>		Zone: Greenland waters of V and XIV (CAP/514GRN)
EU	11 550 <sup>(1)</sup>	
TAC	Not relevant	

<sup>(1)</sup> OJ L 21, 26.1.2010, p. 1.

<sup>(2)</sup> OJ L 172, 30.6.2007, p. 4.

<sup>(1)</sup> Allocated to Iceland. To be fished until 30 April 2010.

*Article 2*

This Regulation shall enter into force on the day following its publication in the *Official Journal of the European Union*.

It shall apply from 1 January 2010.

This Regulation shall be binding in its entirety and directly applicable in all Member States.

Done at Brussels, 17 May 2010.

*For the Commission*  
*The President*  
José Manuel BARROSO

---

**COMMISSION REGULATION (EU) No 422/2010****of 17 May 2010****establishing the standard import values for determining the entry price of certain fruit and vegetables**

THE EUROPEAN COMMISSION,

Having regard to the Treaty on the Functioning of the European Union,

Having regard to Council Regulation (EC) No 1234/2007 of 22 October 2007 establishing a common organisation of agricultural markets and on specific provisions for certain agricultural products (Single CMO Regulation) <sup>(1)</sup>,Having regard to Commission Regulation (EC) No 1580/2007 of 21 December 2007 laying down implementing rules for Council Regulations (EC) No 2200/96, (EC) No 2201/96 and (EC) No 1182/2007 in the fruit and vegetable sector <sup>(2)</sup>, and in particular Article 138(1) thereof,

Whereas:

Regulation (EC) No 1580/2007 lays down, pursuant to the outcome of the Uruguay Round multilateral trade negotiations, the criteria whereby the Commission fixes the standard values for imports from third countries, in respect of the products and periods stipulated in Annex XV, Part A thereto,

HAS ADOPTED THIS REGULATION:

*Article 1*

The standard import values referred to in Article 138 of Regulation (EC) No 1580/2007 are fixed in the Annex hereto.

*Article 2*

This Regulation shall enter into force on 18 May 2010.

This Regulation shall be binding in its entirety and directly applicable in all Member States.

Done at Brussels, 17 May 2010.

*For the Commission,  
On behalf of the President,  
Jean-Luc DEMARTY  
Director-General for Agriculture and  
Rural Development*

---

<sup>(1)</sup> OJ L 299, 16.11.2007, p. 1.

<sup>(2)</sup> OJ L 350, 31.12.2007, p. 1.

## ANNEX

**Standard import values for determining the entry price of certain fruit and vegetables**

(EUR/100 kg)

CN code	Third country code <sup>(1)</sup>	Standard import value
0702 00 00	MA	66,1
	MK	66,4
	TN	116,8
	TR	69,0
	ZZ	79,6
0707 00 05	EG	140,2
	MA	46,1
	MK	50,2
	TR	119,6
	ZZ	89,0
0709 90 70	TR	114,2
	ZZ	114,2
0805 10 20	EG	55,3
	IL	56,9
	MA	56,1
	PY	47,6
	TN	46,4
	TR	49,3
	US	74,5
	ZZ	55,2
0805 50 10	AR	104,0
	TR	70,2
	ZA	87,8
	ZZ	87,3
0808 10 80	AR	82,0
	BR	78,7
	CL	79,7
	CN	74,3
	CR	59,1
	MK	24,7
	NZ	112,3
	US	123,8
	UY	77,5
	ZA	86,1
	ZZ	79,8

<sup>(1)</sup> Nomenclature of countries laid down by Commission Regulation (EC) No 1833/2006 (OJ L 354, 14.12.2006, p. 19). Code 'ZZ' stands for 'of other origin'.

**COMMISSION REGULATION (EU) No 423/2010****of 17 May 2010****amending the representative prices and additional import duties for certain products in the sugar sector fixed by Regulation (EC) No 877/2009 for the 2009/10 marketing year**

THE EUROPEAN COMMISSION,

Having regard to the Treaty on the Functioning of the European Union,

Having regard to Council Regulation (EC) No 1234/2007 of 22 October 2007 establishing a common organisation of agricultural markets and on specific provisions for certain agricultural products (single CMO Regulation) <sup>(1)</sup>,

Having regard to Commission Regulation (EC) No 951/2006 of 30 June 2006 laying down detailed rules for the implementation of Council Regulation (EC) No 318/2006 as regards trade with third countries in the sugar sector <sup>(2)</sup>, and in particular Article 36(2), second subparagraph, second sentence thereof,

Whereas:

(1) The representative prices and additional duties applicable to imports of white sugar, raw sugar and certain syrups

for the 2009/10 marketing year are fixed by Commission Regulation (EC) No 877/2009 <sup>(3)</sup>. These prices and duties have been last amended by Commission Regulation (EU) No 368/2010 <sup>(4)</sup>.

(2) The data currently available to the Commission indicate that those amounts should be amended in accordance with the rules and procedures laid down in Regulation (EC) No 951/2006,

HAS ADOPTED THIS REGULATION:

*Article 1*

The representative prices and additional duties applicable to imports of the products referred to in Article 36 of Regulation (EC) No 951/2006, as fixed by Regulation (EC) No 877/2009 for the 2009/10, marketing year, are hereby amended as set out in the Annex hereto.

*Article 2*

This Regulation shall enter into force on 18 May 2010.

This Regulation shall be binding in its entirety and directly applicable in all Member States.

Done at Brussels, 17 May 2010.

*For the Commission,  
On behalf of the President,*

Jean-Luc DEMARTY  
*Director-General for Agriculture and  
Rural Development*

<sup>(1)</sup> OJ L 299, 16.11.2007, p. 1.

<sup>(2)</sup> OJ L 178, 1.7.2006, p. 24.

<sup>(3)</sup> OJ L 253, 25.9.2009, p. 3.

<sup>(4)</sup> OJ L 107, 29.4.2010, p. 17.

## ANNEX

**Amended representative prices and additional import duties applicable to white sugar, raw sugar and products covered by CN code 1702 90 95 from 18 May 2010**

(EUR)

CN code	Representative price per 100 kg net of the product concerned	Additional duty per 100 kg net of the product concerned
1701 11 10 <sup>(1)</sup>	35,73	0,57
1701 11 90 <sup>(1)</sup>	35,73	4,19
1701 12 10 <sup>(1)</sup>	35,73	0,43
1701 12 90 <sup>(1)</sup>	35,73	3,89
1701 91 00 <sup>(2)</sup>	37,48	6,49
1701 99 10 <sup>(2)</sup>	37,48	3,09
1701 99 90 <sup>(2)</sup>	37,48	3,09
1702 90 95 <sup>(3)</sup>	0,37	0,30

<sup>(1)</sup> For the standard quality defined in point III of Annex IV to Regulation (EC) No 1234/2007.

<sup>(2)</sup> For the standard quality defined in point II of Annex IV to Regulation (EC) No 1234/2007.

<sup>(3)</sup> Per 1 % sucrose content.



**COMMISSION REGULATION (EU) No 424/2010**  
**of 17 May 2010**  
**amending Regulation (EU) No 419/2010 fixing the import duties in the cereals sector applicable**  
**from 16 May 2010**

THE EUROPEAN COMMISSION,

Having regard to the Treaty on the Functioning of the European Union,

Having regard to Council Regulation (EC) No 1234/2007 of 22 October 2007 establishing a common organisation of agricultural markets and on specific provisions for certain agricultural products (Single CMO Regulation) <sup>(1)</sup>,

Having regard to Commission Regulation (EC) No 1249/96 of 28 June 1996 laying down detailed rules for the application of Council Regulation (EEC) No 1766/92 in respect of import duties in the cereals sector <sup>(2)</sup>, and in particular Article 2(1) thereof,

Whereas:

- (1) The import duties in the cereals sector applicable from 16 May 2010 were fixed by Commission Regulation (EU) No 419/2010 <sup>(3)</sup>.

- (2) As the average of the import duties calculated differs by more than EUR 5/tonne from that fixed, a corresponding adjustment must be made to the import duties fixed by Regulation (EU) No 419/2010.

- (3) Regulation (EU) No 419/2010 should therefore be amended accordingly.

HAS ADOPTED THIS REGULATION:

*Article 1*

Annexes I and II to Regulation (EU) No 419/2010 are hereby replaced by the text in the Annex to this Regulation.

*Article 2*

This Regulation shall enter into force on the day of its publication in the *Official Journal of the European Union*.

It shall apply from 18 May 2010.

This Regulation shall be binding in its entirety and directly applicable in all Member States.

Done at Brussels, 17 May 2010.

*For the Commission,*  
*On behalf of the President,*  
Jean-Luc DEMARTY  
*Director-General for Agriculture and*  
*Rural Development*

<sup>(1)</sup> OJ L 299, 16.11.2007, p. 1.

<sup>(2)</sup> OJ L 161, 29.6.1996, p. 125.

<sup>(3)</sup> OJ L 119, 13.5.2010, p. 18.

## ANNEX I

**Import duties on the products referred to in Article 136(1) of Regulation (EC) No 1234/2007 applicable from 18 May 2010**

CN code	Description	Import duties <sup>(1)</sup> (EUR/t)
1001 10 00	Durum wheat, high quality	0,00
	medium quality	0,00
	low quality	0,00
1001 90 91	Common wheat seed	0,00
ex 1001 90 99	High quality common wheat, other than for sowing	0,00
1002 00 00	Rye	14,53
1005 10 90	Maize seed other than hybrid	1,39
1005 90 00	Maize, other than seed <sup>(2)</sup>	1,39
1007 00 90	Grain sorghum other than hybrids for sowing	14,53

<sup>(1)</sup> For goods arriving in the Community via the Atlantic Ocean or via the Suez Canal the importer may benefit, under Article 2(4) of Regulation (EC) No 1249/96, from a reduction in the duty of:

- 3 EUR/t, where the port of unloading is on the Mediterranean Sea, or on the Black Sea,
- 2 EUR/t, where the port of unloading is in Denmark, Estonia, Ireland, Latvia, Lithuania, Poland, Finland, Sweden, the United Kingdom or the Atlantic coast of the Iberian peninsula.

<sup>(2)</sup> The importer may benefit from a flatrate reduction of EUR 24 per tonne where the conditions laid down in Article 2(5) of Regulation (EC) No 1249/96 are met.

## ANNEX II

## Factors for calculating the duties laid down in Annex I

14.5.2010

1. Averages over the reference period referred to in Article 2(2) of Regulation (EC) No 1249/96:

(EUR/t)

	Common wheat <sup>(1)</sup>	Maize	Durum wheat, high quality	Durum wheat, medium quality <sup>(2)</sup>	Durum wheat, low quality <sup>(3)</sup>	Barley
Exchange	Minneapolis	Chicago	—	—	—	—
Quotation	166,36	114,40	—	—	—	—
Fob price USA	—	—	137,01	127,01	107,01	84,45
Gulf of Mexico premium	—	17,41	—	—	—	—
Great Lakes premium	31,52	—	—	—	—	—

<sup>(1)</sup> Premium of 14 EUR/t incorporated (Article 4(3) of Regulation (EC) No 1249/96).<sup>(2)</sup> Discount of 10 EUR/t (Article 4(3) of Regulation (EC) No 1249/96).<sup>(3)</sup> Discount of 30 EUR/t (Article 4(3) of Regulation (EC) No 1249/96).

2. Averages over the reference period referred to in Article 2(2) of Regulation (EC) No 1249/96:

Freight costs: Gulf of Mexico–Rotterdam: 28,82 EUR/t

Freight costs: Great Lakes–Rotterdam: 63,04 EUR/t

# DECISIONS

## COMMISSION DECISION

of 10 May 2010

**amending Annexes I and II to Decision 2009/861/EC on transitional measures under Regulation (EC) No 853/2004 of the European Parliament and of the Council as regards the processing of non-compliant raw milk in certain milk processing establishments in Bulgaria**

(notified under document C(2010) 2953)

(Text with EEA relevance)

(2010/276/EU)

THE EUROPEAN COMMISSION,

Having regard to the Treaty on the Functioning of the European Union,

Having regard to Regulation (EC) No 853/2004 of the European Parliament and of the Council of 29 April 2004 laying down specific hygiene rules for food of animal origin <sup>(1)</sup>, and in particular the first paragraph of Article 9 thereof,

Whereas:

- (1) Regulation (EC) No 853/2004 lays down specific rules on the hygiene of food of animal origin for food business operators. Those rules include hygiene requirements for raw milk and dairy products.
- (2) Commission Decision 2009/861/EC <sup>(2)</sup> provides for certain derogations from the requirements set out in Subchapters II and III of Chapter I of Section IX of Annex III to Regulation (EC) No 853/2004 for the milk processing establishments in Bulgaria listed in that Decision. That Decision is to apply from 1 January 2010 to 31 December 2011.
- (3) Accordingly, certain milk processing establishments listed in Annex I to Decision 2009/861/EC may, by way of derogation from the relevant provisions of Regulation (EC) No 853/2004, process compliant and non-compliant milk provided that the processing of compliant and non-compliant milk is carried out on

separate production lines. In addition, certain milk processing establishments listed in Annex II to that Decision may process non-compliant milk without separate production lines.

- (4) Bulgaria sent the Commission a revised and updated list of those milk processing establishments on 20 November 2009. Therefore, it is necessary to amend the lists of establishments in the Annexes to Decision 2009/861/EC.
- (5) As Decision 2009/861/EC is to apply from 1 January 2010, this Decision should also apply from that date.
- (6) The measures provided for in this Decision are in accordance with the opinion of the Standing Committee on the Food Chain and Animal Health,

HAS ADOPTED THIS DECISION:

*Article 1*

Annexes I and II to Decision 2009/861/EC are replaced by the text in the Annex to this Decision.

*Article 2*

This Decision shall apply from 1 January 2010.

*Article 3*

This Decision is addressed to the Member States.

Done at Brussels, 10 May 2010.

*For the Commission*

John DALLI

*Member of the Commission*

<sup>(1)</sup> OJ L 139, 30.4.2004, p. 55.

<sup>(2)</sup> OJ L 314, 1.12.2009, p. 83.

## ANNEX

Annexes I and II to Decision 2009/861/EC are replaced by the following:

## ‘ANNEX I

**List of milk establishments permitted to process compliant and non-compliant milk as referred to in Article 2**

No	Veterinary No	Name of establishment	Town/Street or Village/Region
1	BG 0412010	“Bi Si Si Handel” OOD	gr. Elena ul. “Treti mart” 19
2	BG 0512025	“El Bi Bulgarikum” EAD	gr. Vidin YUPZ
3	BG 0612027	“Mlechen ray — 2” EOOD	gr. Vratsa kv. “Bistrets”
4	BG 0612043	ET “Zorov- 91 -Dimitar Zorov”	gr. Vratsa Mestnost “Parshevitsa”
5	BG 2012020	“Yotovi” OOD	gr. Sliven kv. “Rechitsa”
6	BG 2512020	“Mizia-Milk” OOD	gr. Targovishte Industrialna zona
7	BG 0812009	“Serdika — 90” AD	gr. Dobrich ul. “25 septemvri” 100
8	BG 2112001	“Rodopeya — Belev” EOOD	gr. Smolyan, ul. “Trakya” 20
9	BG 1212001	“S i S — 7” EOOD	gr. Montana “Vrachansko shose” 1
10	BG 2812003	“Balgarski yogurt” OOD	s. Veselinovo, obl. Yambolska

## ANNEX II

**List of milk processing establishments permitted to process non-compliant milk as referred to in Article 3**

No	Veterinary No	Name establishment	Town/Street or Village/Region
1	BG 2412037	"Stelimeks" EOOD	s. Asen
2	0912015	"Anmar" OOD	s. Padina obsht. Ardino
3	0912016	OOD "Persenski"	s. Zhaltusha obsht. Ardino
4	1012014	ET "Georgi Gushterov DR"	s. Yahinovo
5	1012018	"Evro miyt end milk" EOOD	gr. Kocherinovo obsht. Kocherinovo
6	1112004	"Matev-Mlekoproduct" OOD	s. Goran
7	1112017	ET "Rima-Rumen Borisov"	s. Vrabevo
8	1312023	"Inter-D" OOD	s. Kozarsko
9	1612049	"Alpina -Milk" EOOD	s. Zhelyazno
10	1612064	OOD "Ikay"	s. Zhitnitsa obsht. Kaloyanovo
11	2112008	MK "Rodopa milk"	s. Smilyan obsht. Smolyan
12	2412039	"Penchev" EOOD	gr. Chirpan ul. "Septemvriytsi" 58
13	2512021	"Keya-Komers-03" EOOD	s. Svetlen
14	1312002	"Milk Grup" EOOD	s. Yunacite
15	0112014	ET "Veles-Kostadin Velev"	gr. Razlog ul. "Golak" 14
16	2312041	"Danim-D.Stoyanov" EOOD	gr. Elin Pelin m-st Mansarovo
17	2712010	"Kamadzhiev-milk" EOOD	s. Kriva reka obsht. N.Kozlevo
18	BG 1212029	SD "Voynov i sie"	gr. Montana ul. "N. Yo. Vaptsarov" 8
19	0712001	"Ben Invest" OOD	s. Kostenkovtsi obsht. Gabrovo
20	1512012	ET "Ahmed Tatarla"	s. Dragash voyvoda, obsht. Nikopol
21	2212027	"Ekobalkan" OOD	gr. Sofia bul "Evropa" 138
22	2312030	ET "Favorit- D.Grigorov"	s. Aldomirovtsi
23	2312031	ET "Belite kamani"	s. Dragotintsi
24	BG 1512033	ET "Voynov-Ventsislav Hristakiev"	s. Milkovitsa obsht. Gulyantsi
25	BG 1612020	ET "Bor -Chvor"	s. Dalbok izvor obsht. Parvomay

No	Veterinary No	Name establishment	Town/Street or Village/Region
26	BG 1512029	"Lavena" OOD	s. Dolni Dębnik obl. Pleven
27	BG 1612028	ET "Slavka Todorova"	s. Trud obsht. Maritsa
28	BG 1612051	ET "Radev-Radko Radev"	s. Kurtovo Konare obl. Plovdiv
29	BG 1612066	"Lakti ko" OOD	s. Bogdanitza
30	BG 2112029	ET "Karamfil Kasakliev"	gr. Dospat
31	BG 0912004	"Rodopchanka" OOD	s. Byal izvor obsht. Ardino
32	0112003	ET "Vekir"	s. Godlevo
33	0112013	ET "Ivan Kondev"	gr. Razlog Stopanski dvor
34	0212037	"Megakomers" OOD	s. Lyulyakovo obsht. Ruen
35	0512003	SD "LAF-Velizarov i sie"	s. Dabravka obsht. Belogradchik
36	0612035	OOD "Nivego"	s. Chiren
37	0612041	ET "Ekoprodukt-Megiya- Bogorodka Dobrilova"	gr. Vratsa ul. "Iinden" 3
38	0612042	ET "Mlechen puls — 95 — Tsvetelina Tomova"	gr. Krivodol ul. "Vasil Levski"
39	1012008	"Kentavar" OOD	s. Konyavo obsht. Kyustendil
40	1212022	"Milkkomm" EOOD	gr. Lom ul. "Al. Stamboliyski" 149
41	1212031	"ADL" OOD	s. Vladimirovo obsht. Boychinovtsi
42	1512006	"Mandra" OOD	s. Obnova obsht. Levski
43	1512008	ET "Petar Tonovski-Viola"	gr. Koynare ul. "Hr. Botev" 14
44	1512010	ET "Militsa Lazarova-90"	gr. Slavyanovo, ul. "Asen Zlatarev" 2
45	1612024	SD "Kostovi — EMK"	gr. Saedinenie ul. "L. Karavelov" 5
46	1612043	ET "Dimitar Bikov"	s. Karnare obsht. "Sopot"
47	1712046	ET "Stem-Tezdzhan Ali"	gr. Razgrad ul. "Knyaz Boris"23
48	2012012	ET "Olimp-P. Gurtsov"	gr. Sliven m-t "Matsulka"
49	2112003	"Milk- inzhenering" OOD	gr. Smolyan ul. "Chervena skala" 21
50	2112027	"Keri" OOD	s. Borino, obsht. Borino

No	Veterinary No	Name establishment	Town/Street or Village/Region
51	2312023	"Mogila" OOD	gr. Godech, ul. "Ruse" 4
52	2512018	"Biomak" EOOD	gr. Omurtag ul. "Rodopi" 2
53	2712013	"Ekselans" OOD	s. Osmar, obsht. V. Preslav
54	2812018	ET "Bulmilk-Nikolay Nikolov"	s. General Inzovo, obl. Yambolska
55	2812010	ET "Mladost-2-Yanko Yanev"	gr. Yambol, ul. "Yambolen" 13
56	BG 1012020	ET "Petar Mitov-Universal"	s. Gorna Grashitsa obsht. Kyustendil
57	BG 1112016	Mandra "IPZHZ"	gr. Troyan ul. "V. Levski" 281
58	BG 1712042	ET "Madar"	s. Terter
59	BG 2612042	"Bulmilk" OOD	s. Konush obl. Haskovska
60	BG 0912011	ET "Alada-Mohamed Banashak"	s. Byal izvor obsht. Ardino
61	1112026	"Ablamilk" EOOD	gr. Lukovit, ul. "Yordan Yovkov" 13
62	1312005	"Ravnogor" OOD	s. Ravnogor
63	1712010	"Bulagrotreyd-chastna kompaniya" EOOD	s. Yuper Industrialen kvartal
64	1712013	ET "Deniz"	s. Ezerche
65	2012011	ET "Ivan Gardev 52"	gr. Kermen ul. "Hadzhi Dimitar" 2
66	2012024	ET "Denyo Kalchev 53"	gr. Sliven ul. "Samuilovsko shose" 17
67	2112015	OOD "Rozhen Milk"	s. Davidkovo, obsht. Banite
68	2112026	ET "Vladimir Karamitev"	s. Varbina obsht. Madan
69	2312007	ET "Agropromilk"	gr. Ihtiman, ul. "P. Slaveikov" 19
70	2412041	"Mlechen svyat 2003" OOD	s. Bratya Daskalovi obsht. Bratya Daskalovi
71	2612038	"Bul Milk" EOOD	gr. Haskovo Sev. industr. zona
72	2612049	ET "Todorovi-53"	gr. Topolovgrad ul. "Bulgaria" 65
73	BG 1812008	"Vesi" OOD	s. Novo selo
74	BG 2512003	"Si Vi Es" OOD	gr. Omurtag Promishlena zona
75	BG 2612034	ET "Elikvir-Petko Petev"	s. Gorski izvor



No	Veterinary No	Name establishment	Town/Street or Village/Region
76	BG 1812003	"Sirma Prista" AD	gr. Ruse bul. "3-ti mart" 51
77	BG 2512001	"Mladost -2002" OOD	gr. Targovishte bul. "29-ti yanuari" 7
78	0312002	ET "Mario"	gr. Suvorovo
79	0712015	"Rosta" EOOD	s. M. Varshets
80	0812030	"FAMA" AD	gr. Dobrich bul. "Dobrudzha" 2
81	0912003	"Koveg-mlechni produkti" OOD	gr. Kardzhali Promishlena zona
82	1412015	ET "Boycho Videnov — Elbokada 2000"	s. Stefanovo obsht. Radomir
83	1712017	"Diva 02" OOD	gr. Isperih ul. "An.Kanchev"
84	1712019	ET "Ivaylo-Milena Stancheva"	gr. Isperih Parvi stopanski dvor
85	1712037	ET "Ali Isliamov"	s. Yasenovets
86	1712043	"Maxima milk" ODD	s. Samuil
87	1812005	"DAV — Viktor Simonov" EOOD	gr. Vetovo ul. "Han Kubrat" 52
88	2012010	"Saray" OOD	s. Mokren
89	2012032	"Kiveks" OOD	s. Kovachite
90	2012036	"Minchevi" OOD	s. Korten
91	2212009	"Serdika -94" OOD	gr. Sofia kv. Zheleznitza
92	2212023	"EL BI Bulgarikum" EAD	gr. Sofia ul. "Malashevska" 12 A
93	2312028	ET "Sisi Lyubomir Semkov"	s. Anton
94	2312033	"Balkan spetsial" OOD	s. Gorna Malina
95	2312039	EOOD "Laktioni"	s. Ravno pole, obl. Sofiyska
96	2412040	"Inikom" OOD	gr. Galabovo ul. "G.S.Rakovski" 11
97	2512011	ET "Sevi 2000- Sevie Ibryamova"	s. Krepcha obsht. Opaka
98	2612015	ET "Detelina 39"	s. Brod
99	2812002	"Arachievi" OOD	s. Kirilovo, obl. Yambolska'

## COMMISSION DECISION

of 12 May 2010

## amending Decision 2009/821/EC as regards the lists of border inspection posts and veterinary units in Traces

(notified under document C(2010) 3040)

(Text with EEA relevance)

(2010/277/EU)

THE EUROPEAN COMMISSION,

Having regard to the Treaty on the Functioning of the European Union,

Having regard to Council Directive 90/425/EEC of 26 June 1990 concerning veterinary and zootechnical checks applicable in intra-Community trade in certain live animals and products with a view to the completion of the internal market <sup>(1)</sup>, and in particular Article 20(1) and (3) thereof,

Having regard to Council Directive 91/496/EEC of 15 July 1991 laying down the principles governing the organisation of veterinary checks on animals entering the Community from third countries and amending Directives 89/662/EEC, 90/425/EEC and 90/675/EEC <sup>(2)</sup>, and in particular the last sentence of the second subparagraph of Article 6(4) thereof,

Having regard to Council Directive 97/78/EC of 18 December 1997 laying down the principles governing the organisation of veterinary checks on products entering the Community from third countries <sup>(3)</sup>, and in particular Article 6(2) thereof,

Whereas:

(1) Commission Decision 2009/821/EC of 28 September 2009 drawing up a list of approved border inspection posts, laying down certain rules on the inspections carried out by Commission veterinary experts and laying down the veterinary units in Traces <sup>(4)</sup> lays down a list of border inspection posts approved in accordance with Directives 91/496/EEC and 97/78/EC. That list is set out in Annex I to that Decision.

(2) The Commission inspection service, the Food and Veterinary Office (FVO) carried out an inspection at the border inspection post at the port of Antwerp in Belgium. The results of the inspection were satisfactory. An additional inspection centre should therefore be added for that border inspection post in the list set out in Annex I to Decision 2009/821/EC. In addition, the categories of the existing inspection centres at this border inspection post should be amended.

(3) The Commission inspection service, the Food and Veterinary Office (FVO) carried out an inspection at the border inspection post at the port of Gdańsk in Poland. The results of the inspection were satisfactory. An additional inspection centre should therefore be added for that border inspection post in the list set out in Annex I to Decision 2009/821/EC.

(4) Following communications from Denmark and Poland, certain inspection centres at border inspection posts for those Member States should be deleted from the list of border inspection posts set out in Annex I to Decision 2009/821/EC.

(5) Following communication from France, the border inspection post at Brest airport should be deleted from the list of border inspection posts set out in Annex I to Decision 2009/821/EC. In addition, certain categories at the border inspection posts at the airports at Lyon-Saint Exupéry, Marseille aéroport and Nice should be modified in the list of border inspection posts set out in Annex I to Decision 2009/821/EC.

(6) Following communication from Italy, certain categories at the border inspection posts at the airports at Milano-Linate, Milano-Malpensa, Palermo, Reggio Calabria and Rimini should be suspended in the list of border inspection posts set out in Annex I to Decision 2009/821/EC. In addition, certain categories at the border inspection post at the port at Napoli should be modified in the list of border inspection posts set out in Annex I to Decision 2009/821/EC.

(7) Following communication from Latvia, the border inspection post at the port of Riga (Baltmarine Terminal) should be deleted from the list of border inspection posts set out in Annex I to Decision 2009/821/EC. In addition, the listing of the categories for the two inspection centres at the approved border inspection post at Riga port should be corrected in the list of border inspection posts set out in Annex I to Decision 2009/821/EC.

<sup>(1)</sup> OJ L 224, 18.8.1990, p. 29.

<sup>(2)</sup> OJ L 268, 24.9.1991, p. 56.

<sup>(3)</sup> OJ L 24, 30.1.1998, p. 9.

<sup>(4)</sup> OJ L 296, 12.11.2009, p. 1.

- (8) Following communication from Spain, the list of border inspection posts for that Member State should be amended to take account of the suspension of two of its border inspection posts, of lifting the suspension for certain categories of products of animal origin that can be checked at one of its border inspection posts and of limiting the approval categories for products of animal origin at another one of its border inspection posts already approved in accordance with Decision 2009/821/EC.
- (9) Following communication from the Netherlands, the name of one Inspection Centre at the port of Rotterdam should be amended in the list of border inspection posts set out in Annex I to Decision 2009/821/EC.
- (10) The list of central units, regional units and local units in Traces is laid down in Annex II to Decision 2009/821/EC.
- (11) Following communications from Denmark, Germany, Ireland, Italy, Latvia and Finland, certain changes to the central, regional and local units in Traces should be reflected in the Annex II to Decision 2009/821/EC for those Member States.
- (12) Decision 2009/821/EC should therefore be amended accordingly.

- (13) The measures provided for in this Decision are in accordance with the opinion of the Standing Committee on the Food Chain and Animal Health,

HAS ADOPTED THIS DECISION:

*Article 1*

1. Annex I to Decision 2009/821/EC is amended in accordance with Annex I to this Decision.
2. Annex II to Decision 2009/821/EC is amended in accordance with Annex II to this Decision.

*Article 2*

This Decision is addressed to the Member States.

Done at Brussels, 12 May 2010.

*For the Commission*  
John DALLI  
*Member of the Commission*

## ANNEX I

Annex I is amended as follows:

1. In the part concerning Belgium, the entry for the port at Antwerp is replaced by the following:

'Antwerpen Anvers	BE ANR 1	P	GIP LO	HC(2), NHC	
			Kaai 650	HC(2)	
			Afrulog	HC(2), NHC'	

2. In the part concerning Denmark, the entry of the inspection centre Centre 1, SAS 1 (North) for the airport at København is deleted.

3. The part concerning Spain is amended as follows:

- (a) the entry for the airport at Almeria is replaced by the following:

'Almeria (*)	ES LEI 4	A		HC(2) (*), NHC(2) (*)	O (*)
--------------	----------	---	--	-----------------------	-------

- (b) the entry for the airport at Asturias is replaced by the following:

'Asturias (*)	ES AST 4	A		HC(2) (*)	
---------------	----------	---	--	-----------	--

- (c) the entry for the airport at Palma de Mallorca is replaced by the following:

'Palma de Mallorca	ES PMI 4	A		HC(2), NHC(2)	O'
--------------------	----------	---	--	---------------	----

- (d) the entry for the airport at Vitoria is replaced by the following:

'Vitoria	ES VIT 4	A	Productos	HC(2), NHC-NT(2), NHC-T(CH)(2)	
			Animales		U, E, O'

4. The part concerning France is amended as follows:

- (a) the entry for the border inspection post at Brest airport is deleted;

- (b) the entry for the airport at Lyon-Saint Exupéry is replaced by the following:

'Lyon-Saint Exupéry	FR LIO 4	A		HC-T(1), HC-NT, NHC'	
---------------------	----------	---	--	----------------------	--

- (c) the entry for the airport at Marseille is replaced by the following:

'Marseille Aéroport	FR MRS 4	A		HC-T(1), HC-NT'	
---------------------	----------	---	--	-----------------	--

- (d) the entry for the airport at Nice is replaced by the following:

'Nice	FR NCE 4	A		HC-T(CH) (1) (2)	O (14)'
-------	----------	---	--	------------------	---------

5. The part concerning Italy is amended as follows:

- (a) the entry for the airport at Milano-Linate is replaced by the following:

'Milano-Linate	IT LIN 4	A		HC(2), NHC(2)	O (*)
----------------	----------	---	--	---------------	-------

(b) the entry for the airport at Milano-Malpensa is replaced by the following:

Milano-Malpensa	IT MXP 4	A	Magazzini aeroportuali ALHA	HC(2), NHC(2)	
			SEA		U, E
			Cargo City MLE	HC, NHC (*)	O'

(c) the entry for the port at Napoli is replaced by the following:

Napoli	IT NAP 1	P	Molo Bausan	HC, NHC-NT'	
--------	----------	---	-------------	-------------	--

(d) the entry for the airport at Palermo is replaced by the following:

Palermo (*)	IT PMO 4	A		HC-T (*)	
-------------	----------	---	--	----------	--

(e) the entry for the airport at Reggio Calabria is replaced by the following:

Reggio Calabria (*)	IT REG 4	A		HC (*), NHC (*)	
---------------------	----------	---	--	-----------------	--

(f) the entry for the airport at Rimini is replaced by the following:

Rimini (*)	IT RMI 4	A		HC(2) (*), NHC(2) (*)	
------------	----------	---	--	-----------------------	--

6. The part concerning Latvia is amended as follows:

(a) the entry for the port at Riga is replaced by the following:

Riga ( <i>Riga port</i> )	LV RIX 1a	P		HC(2), NHC(2)	
			Kravu termināls	HC-T(FR)(2), HC-NT(2)'	

(b) the entry for the border inspection post at Riga (*Baltmarine Terminal*) port is deleted.

7. In the part concerning Netherlands, the entry for the port at Rotterdam is replaced by the following:

Rotterdam	NL RTM 1	P	Eurofrigo Karimatastraat	HC, NHC-T(FR), NHC-NT	
			Eurofrigo, Abel Tasmanstraat	HC	
			Frigocare Rotterdam B.V.	HC-T(FR)(2)	
			Wibaco	HC-T(FR)(2), HC-NT(2)'	

8. The part concerning Poland is amended as follows:

(a) the entry for the port at Gdańsk is replaced by the following:

Gdańsk	PL GDN 1	P	IC 1	HC(2), NHC	
			IC 2	HC(2), NHC(2)'	

(b) the entry for the port at Gdynia is replaced by the following:

Gdynia	PL GDY 1	P	IC 1	HC, NHC	U, E, O'
--------	----------	---	------	---------	----------

## ANNEX II

Annex II is amended as follows:

1. In the part concerning Denmark, the entries for the current three regional units NORD, SYD, ØST and the local units are replaced by the following:

**'DK00001 REGION VEST**

DK00800 HADERSLEV

DK00900 ESBJERG

DK01000 VEJLE

DK01100 HERNING

DK01200 ÅRHUS

DK01300 VIBORG

DK01400 AALBORG

**'DK00002 REGION ØST**

DK00100 RØDOVRE

DK00400 RINGSTED

DK00700 ODENSE'

2. In the part concerning Germany, the entry for 'NIEDERSACHSEN' is amended as follows:

- (a) ZWECKVERBAND JADE-WESER is replaced by the following:

'DE14103 ZWECKVERBAND VETERINÄRAMT JADEWESER'

- (b) BRAKE, ZWECKVERBAND JADE-WESER is replaced by the following:

'DE46103 BRAKE, ZWECKVERBAND VETERINÄRAMPT JADEWESER'

- (c) WITTMUND, ZWECKVERBAND JADE-WESER is replaced by the following:

'DE46903 WITTMUND, ZWECKVERBAND VETERINÄRAMPT JADEWESER'

3. In the part concerning Ireland, the following entries for the local units are deleted:

'IE00100 CARLOW

IE00300 CLARE

IE01000 KILKENNY

IE01400 LONGFORD

IE01500 LOUTH

IE02100 TIPPERARY NORTH

IE01200 SLIGO'

4. In the part concerning Italy in the region of 'LOMBARDIA', the entry for the local unit MILANO 3 is replaced by the following:

'IT02903 MONZA e BRIANZA'

5. The part concerning Latvia is amended as follows:

- (a) the entry for the local unit RIGA (BFT) is replaced by the following:

'LV00028 RIGA-MN'

- (b) the entry for the following local unit is deleted:

'LV00030 BALTMARINE TERMINAL'

6. The part concerning Finland is amended as follows:

- (a) the entry for the central unit is replaced by the following:

'FI00000 ELINTARVIKETURVALLISUUSVIRASTO EVIRA'

- (b) the entries for the local units are replaced by the following:

'FI00100 ETELÄ-SUOMEN ALUEHALLINTOVIRASTO, HELSINKI

FI00200 LOUNAI-SUOMEN ALUEHALLINTOVIRASTO

FI00300 AHVENANMAAN VALTIONVIRASTO

FI00400 ETELÄ-SUOMEN ALUEHALLINTOVIRASTO, HÄMEENLINNA

FI00402 LÄNSI- JA SISÄ-SUOMEN ALUEHALLINTOVIRASTO, TAMPERE

FI00500 ETELÄ-SUOMEN ALUEHALLINTOVIRASTO, KOUVOLA

FI00600 ITÄ-SUOMEN ALUEHALLINTOVIRASTO, MIKKELI

FI00700 ITÄ-SUOMEN ALUEHALLINTOVIRASTO, JOENSUU

FI00800 ITÄ-SUOMEN ALUEHALLINTOVIRASTO, KUOPIO

FI00900 LÄNSI- JA SISÄ-SUOMEN ALUEHALLINTOVIRASTO, JYVÄSKYLÄ

FI01000 LÄNSI- JA SISÄ-SUOMEN ALUEHALLINTOVIRASTO, VAASA

FI01100 POHJOIS-SUOMEN ALUEHALLINTOVIRASTO

FI01200 LAPIN ALUEHALLINTOVIRASTO'

---



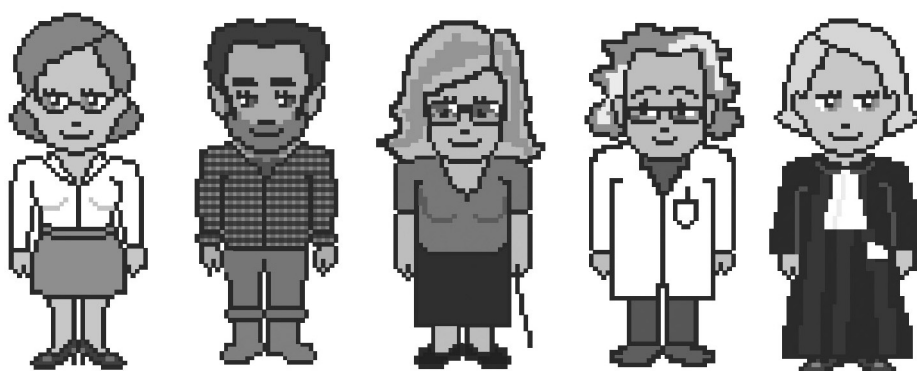




# EU Book shop

All the EU publications

YOU are looking for!



[bookshop.europa.eu](http://bookshop.europa.eu)



## 2010 SUBSCRIPTION PRICES (excluding VAT, including normal transport charges)

EU Official Journal, L + C series, paper edition only	22 official EU languages	EUR 1 100 per year
EU Official Journal, L + C series, paper + annual CD-ROM	22 official EU languages	EUR 1 200 per year
EU Official Journal, L series, paper edition only	22 official EU languages	EUR 770 per year
EU Official Journal, L + C series, monthly CD-ROM (cumulative)	22 official EU languages	EUR 400 per year
Supplement to the Official Journal (S series), tendering procedures for public contracts, CD-ROM, two editions per week	multilingual: 23 official EU languages	EUR 300 per year
EU Official Journal, C series — recruitment competitions	Language(s) according to competition(s)	EUR 50 per year

Subscriptions to the *Official Journal of the European Union*, which is published in the official languages of the European Union, are available for 22 language versions. The Official Journal comprises two series, L (Legislation) and C (Information and Notices).

A separate subscription must be taken out for each language version.

In accordance with Council Regulation (EC) No 920/2005, published in Official Journal L 156 of 18 June 2005, the institutions of the European Union are temporarily not bound by the obligation to draft all acts in Irish and publish them in that language. Irish editions of the Official Journal are therefore sold separately.

Subscriptions to the Supplement to the Official Journal (S Series — tendering procedures for public contracts) cover all 23 official language versions on a single multilingual CD-ROM.

On request, subscribers to the *Official Journal of the European Union* can receive the various Annexes to the Official Journal. Subscribers are informed of the publication of Annexes by notices inserted in the *Official Journal of the European Union*.

CD-Rom formats will be replaced by DVD formats during 2010.

## Sales and subscriptions

Subscriptions to various priced periodicals, such as the subscription to the *Official Journal of the European Union*, are available from our commercial distributors. The list of commercial distributors is available at:

[http://publications.europa.eu/others/agents/index\\_en.htm](http://publications.europa.eu/others/agents/index_en.htm)

**EUR-Lex (<http://eur-lex.europa.eu>) offers direct access to European Union legislation free of charge. The *Official Journal of the European Union* can be consulted on this website, as can the Treaties, legislation, case-law and preparatory acts.**

**For further information on the European Union, see: <http://europa.eu>**

