

Official Journal

of the European Union

C 315



English edition

Information and Notices

Volume 56

29 October 2013

<u>Notice No</u>	<u>Contents</u>	<u>Page</u>
IV <i>Notices</i>		
NOTICES FROM MEMBER STATES		
2013/C 315/01	List of natural mineral waters recognised by Member States ⁽¹⁾	1
2013/C 315/02	Information communicated by Member States regarding State aid granted under Commission Regulation (EC) No 1857/2006 on the application of Articles 87 and 88 of the Treaty to State aid to small and medium-sized enterprises active in the production of agricultural products and amending Regulation (EC) No 70/2001	74
2013/C 315/03	Information communicated by Member States regarding State aid granted under Commission Regulation (EC) No 800/2008 declaring certain categories of aid compatible with the common market in application of Articles 87 and 88 of the Treaty (General Block Exemption Regulation) ⁽¹⁾	76
V <i>Announcements</i>		
PROCEDURES RELATING TO THE IMPLEMENTATION OF COMPETITION POLICY		
European Commission		
2013/C 315/04	State aid — Germany — State aid No SA.29338 (2013/C-30) (ex 2013N-504) — Increase of the second-loss guarantee for HSH Nordbank AG — Invitation to submit comments pursuant to Article 108(2) TFEU ⁽¹⁾	81

EN

Price:
EUR 4⁽¹⁾ Text with EEA relevance

IV

(Notices)

NOTICES FROM MEMBER STATES

LIST OF NATURAL MINERAL WATERS RECOGNISED BY MEMBER STATES

(Text with EEA relevance)

(2013/C 315/01)

List of natural mineral waters recognised by Belgium, Bulgaria, Czech Republic, Denmark, Germany, Estonia, Ireland, Greece, Spain, France, Croatia, Italy, Cyprus, Latvia, Lithuania, Luxembourg, Hungary, Netherlands, Austria, Poland, Portugal, Romania, Slovenia, Slovakia, Finland, Sweden and United-Kingdom

In accordance with Article 1 of Directive 2009/54/EC of the European Parliament and of the Council of 18 June 2009 on the exploitation and marketing of natural mineral waters ⁽¹⁾, the Commission is publishing in the *Official Journal of the European Union* the list of natural mineral waters recognised as such by the Member States.

The following list replaces any list of recognised natural mineral waters previously published.

List of natural mineral waters recognised by Belgium

Trade description	Name of source	Place of exploitation
Amelbergabronnen	Amelberga	Mater
Bon-Val	Minval	Bavikhove
Bru	Bru	Chevron
Chaudfontaine	Thermale	Chaudfontaine
Chevron	Monastère	Chevron
Christianabronnen	Christiana	Gavere
Clémentine	Clémentine	Spixhe
Cristal Monopole	Cristal Monopole	Aarschot
Duke	Duke	Francorchamps
Gintsbergbronnen	Gintsberg	Scheldewindeke
Harre	Harre	Werbomont-Ferrières
Koningsbronnen	Koning	Brakel
Leberg	Leberg	Roosdal
Love my planet®	L'OR	Chevron
Ordal	Ordal	Ranst
Pouhon de Bande	Pouhon de Bande	Bande
San Benedetto	Geneviève	Genval
Spa	Marie-Henriette	Spa

⁽¹⁾ OJ L 164, 26.6.2009, p. 45.

Trade description	Name of source	Place of exploitation
Spa	Barisart	Spa
Spa	Reine	Spa
Sty	Sty	Céroux-Mousty
Sunco	Sunco	Ninove
Toep	Toep	Brakel
Top	Top	Brakel
1	Volette	Etalle
Val	Val	Boortmeerbeek
Valvert	Valvert	Etalle
Villers Monopole	Villers	Villers-le-Gambon

List of natural mineral waters from third countries recognised by Belgium

Trade description	Name of source	Place of exploitation
Sembrancher	La Garde	Sembrancher / Switzerland

List of natural mineral waters recognised by Bulgaria

Trade description	Name of source	Place of exploitation
Айс Бред (Ice Breath)	Драгойново сондаж 9 (Dragoynovo sondazh 9)	Драгойново (Dragoynovo)
Банкя (Bankia)	Банкя сондаж 1 хг Иваняне (Bankya sondazh 1 hg Ivanyane)	Банкя (Bankya)
Вега (Vega)	Шивачево извор Хаджи Димитър (Shivachevo izvor Hadzhi Dimitar)	Шивачево (Shivachevo)
Велин (Velin)	Велинград сондаж 5 Горски пункт (Velingrad sondazh 5 Gorski punkt)	Велинград (Velingrad)
Водица (Voditza)	Водица сондаж P-2 (Voditsa sondazh R-2)	Водица (Voditsa)
Горна баня (Gorna bania)	Горна баня сондаж 3 (Gorna banya sondazh 3)	Горна баня (Gorna banya)
Горна баня (Gorna bania)	Горна баня сондаж 4 и извор Домус дере (Gorna banya sondazh 4 i izvor Domus dere)	Горна баня (Gorna banya)
Девин (Devin)	Девин сондаж 5 (Devin sondazh 5)	Девин (Devin)
Девин газирана (Devin gazirana)	Девин сондаж 3 (Devin sondazh 3)	Девин (Devin)
Долна баня (Dolna bania)	Долна баня сондаж 141 (Dolna banya sondazh 141)	Долна баня (Dolna banya)
Долче Вита (Dolce Vita)	Шивачево извор Хаджи Димитър (Shivachevo izvor Hadzhi Dimitar)	Шивачево (Shivachevo)
Извор (Izvor)	Каварна сондаж P-113 (Kavarna sondazh R-113)	Каварна (Kavarna)
Княжево (Knyazhevo)	Княжево сондаж 1 хг (Knyazhevo sondazh 1 hg)	Княжево (Knyazhevo)
Княжевска (Knyazhevskа)	Княжево сондаж Книжна фабрика (Knyazhevo sondazh Knizhna fabrika)	Княжево (Knyazhevo)

Trade description	Name of source	Place of exploitation
Ком (Kom)	Бързия сондаж 1 (Barzia sondazh 1)	Бързия (Barzia)
Леново (Lenovo)	Леново сондаж 12 (Lenovo sondazh 12)	Леново (Lenovo)
Михалково (Mihalkovo)	Михалково сондажи 1aBP и 1 BKP (Mihalkovo sondazhi 1aVP i 1 VKP)	Михалково (Mihalkovo)
Пирин Спринг (Pirin Spring)	Баничан сондаж 273 (Banichan sondazh 273)	Баничан (Banichan)
Преподобна Стойна (Prepodobna Stoyna)	Катунци сондаж 236 Разсадника (Katuntsi sondazh 236 Razsadnika)	Катунци (Katuntsi)
Ракитово (Rakitovo)	Ракитово сондаж 5 (Rakitovo sondazh 5)	Ракитово (Rakitovo)
Спанчевци (Spanchevtsi)	Спанчевци сондаж 2 (Spanchevtsi sondazh 2)	Спанчевци (Spanchevtsi)
Старо Железаре (Staro Jelezare)	Старо Железаре сондажи 2 и 4 (Staro Zhelezare sondazhi 2 i 4)	Старо Железаре (Staro Zhelezare)
Хисар (Hisar)	Хисаря сондажи 1 и 7 (Hisarya sondazhi 1 i 7)	Хисаря (Hisarya)
Хисар (Hissar)	Хисаря извор Чобан чешма (Hisarya izvor Choban cheshma)	Хисаря (Hisarya)
Хисаря (Hissaria)	Хисаря сондаж 7 (Hisarya sondazh 7)	Хисаря (Hisarya)

List of natural mineral waters recognised by the Czech Republic

Trade description	Name of source	Place of exploitation
Mattoni	Mattoni	Kyselka u Karlových Varů
Magnesia	Magnesia	Mnichov u Mariánských Lázní
Ondrášovka	Ondrášovka	Ondrášov
Poděbradka	Poděbradka	Poděbrady - Velké Zboží
IL SANO	IL SANO	Chodová Planá
Aqua Maria	Aqua Maria	Mariánské Lázně
Hanácká kyselka	Hanácká kyselka	Horní Moštěnice
Mostini	Mostini	Brodek u Přerova
Korunní	Korunní	Stráž nad Ohří
Dobrá voda	Dobrá voda	Byňov

List of natural mineral waters recognised by Denmark

Trade description	Name of source	Place of exploitation
Aqua d'or	Aqua d'or-kilden	Fasterholt, 7330 Brande

Trade description	Name of source	Place of exploitation
Denice	Denicekilden	Fasterholt, 7330 Brande
Carlsberg Kurvand	Arnakke Kilde	Silkeborg Bad, Silkeborg
Harrild	Harrilds Kilde	Harrildgård, 7330 Brande
Kærspringeren	Vinten-Kilden	Brønsholmvej 11, Vinten, Horsens
Iskilde	Iskilden	Skårdal, Langkær 29, Hem, 8660 Skanderborg
AQUA-WELL	AQUA-WELL-Kilden	Harboes Bryggeri, Spegerborgvej 32-34, 4230 Skælskør
Egekilde	Egekilde	Faxe Bryggeri A/S, Faxe Allé 1, 4640 Fakse
Kildevæld	Kildevæld	Sdr. Saltumvej 4, 9493, Saltum
Nornir	Nornir	Skerrisvej 4, 7330 Brande
Krusmølle Kilde	Krusmølle Kilde	Krusmølle Kilden, V/ Krusmølle i Sdr. Jylland
Holk	Holk	Amtsvejen 133, Mellerup, 8900 Randers / Århus

List of natural mineral waters recognised by Germany

Trade description	Name of source	Place of exploitation
1-Aqua-Quelle	1-Aqua-Quelle	Thür
Abenstaler Quelle	Abenstaler Quelle	Elsendorf-Hornegg
Achalmquelle	Quelle 29	Reutlingen-Rommelsbach
Adelheidquelle	Adelheidquelle	Bad Überkingen
Adelholzener Alpenquell Bergen	Adelholzener Alpenquell Bergen	Bad Adelholzen
Adelholzener Primus-Quelle	Adelholzener Primus-Quelle	Bad Adelholzen
Adelindis-Quelle	Adelindis-Quelle	Bad Buchau
Adello	Adello	Bad Liebenwerda
Adello	Brunnen XVII	Ebersburg-Weyhers <u>Gemarkung Lütter</u> — Flur 5, Flurst. 37 <u>Gemarkung Ebersberg</u> — Flur 3, Flurst. 5/3
Ahrtalquelle	Ahrtalquelle	Sinzig
Aktisa	Aktisa-Brunnen	Bad Vilbel
Alasia Perle	Alasia Perle	Bad Liebenwerda
Alasia Perle	Alasia Perle (Alaska) Bohrbrunnen II, Bohrbrunnen IV, Bohrbrunnen XIII, Bohrbrunnen XVI und Bohrbrunnen XIX	Ebersburg-Weyhers Gemeinde Ebersburg <u>Gemarkung Weyhers</u> — Flur 6, Flurst. 50/4 — Flur 6, Flurst. 76 — Flur 6, Flurst. 80/3

Trade description	Name of source	Place of exploitation
		<u>Gemarkung Lütter</u> — Flur 5, Flurst. 46/1 <u>Gemarkung Ebersberg</u> — Flur 2, Flurst. 34
Albertusquelle	Albertusquelle	Dasing
Albertus-Quelle	Albertus-Quelle (II)	Dasing
Alete Mineralquelle	Alete Mineralquelle	Polling-Weiding/Kreis Mühldorf am Inn
Alexander-Quelle	Alexander-Quelle	Eppelborn
ALLGÄUER ALPENWASSER	Allgäuer Alpenwasser Brunnen B2	Oberstaufen, Flur Nr. 304 – Gemarkung Thalkirchdorf
Allgäu-Quelle	Allgäu-Quelle	Oberstaufen-Thalkirchdorf
Aloisius Quelle	Aloisius Quelle	Gundelfingen an der Donau
Alosa	Tiefenquelle	Wagenfeld
Alosa	Tieflandquelle	Stralsund
Alstertaler Mineralbrunnen	Alstertaler Mineralbrunnen	Norderstedt
Alter Brunnen	Alter Brunnen	Bad Camberg-Oberselters
Altmühltaler Quelle	Altmühltaler Quelle	Treuchtlingen
Alvara-Quelle	Alvara-Quelle	Mendig
alwa	Alwaris-Quelle	Sachsenheim-Spielberg
alwa	alwa-Quelle	Sersheim
Alwa	bonalwa	Bad Peterstal-Griesbach
Amadeus-Quelle	Amadeus-Quelle (Brunnen 2)	Mönchengladbach
Ambassador	Ambassador	Bad Liebenwerda
Andreasquelle	Andreasquelle	Sulzbach am Main-Soden
Anhaltiner Bergquelle	Anhaltiner Bergquelle	Hecklingen-Gänsefurth
Ansgar-Quelle	Ansgar-Quelle	Rantum/Sylt
Apodis	Apodis Quelle	Emsdetten
Apollinaris	Apollinaris	Bad Neuenahr-Ahrweiler
Apollinaris Silence	Apollinaris Silence	Bad Neuenahr-Ahrweiler
Aqua Culinaris	Quintus-Quelle	Bruchsal
Aqua Fun	Elfen-Quelle	Haigerloch-Bad Imnau
Aqua Fun	Gebirgsquelle	Rhens
Aqua Nordic	Aqua Nordic	Husum-Rosendahl
Aqua Römer sanft	Sanft Quelle	Großerlach
Aqua Sirona	Aqua Sirona	Schwollen

Trade description	Name of source	Place of exploitation
Aqua Star	Brunnen XX	Ebersburg-Weyhers Gemarkung Lütter — Flur 5, Flurst. 37 Gemarkung Ebersberg — Flur 3, Flurst. 5/3
Aqua-frisch	Heinberg-Quelle	Warburg-Germete
aquamono	Thalfanger Sprudel	Thalfang davon abweichend Quellort: Malborn
Aquana	Aquana	Löningen
AQUANT	AQUANT	Gemarkung Fallingbostel
Aquarissima	Gebirgsquelle	Rhens
AquaRömer	Römerquelle	Mainhardt-Baad
AquaStar	AquaStar	Friedberg-Dorheim
Aquatiore	Fiorelino	Erfstadt
Aquilla	Aquilla	Bochum
Aquintéll	Aquintéll	Duisburg
Aquintéll	Aquintéll Quelle	Wagenfeld
Aquintéll Quelle	Aquintéll Quelle	Bad Brückenau
Aquintus	Aquintus Quelle	Duisburg-Walsum
Ardey Quelle	Ardey Quelle	Duisburg-Walsum
Ardey-Quelle	Ardey-Quelle	Dortmund
Arieheller	Arieheller	Rheinbrohl-Arieheller
Arieheller-Brunnen	Arieheller-Quelle	Rheinbrohl-Arieheller
Ariston-Sprudel	Ariston-Sprudel	Mendig
Ariwa	David-Quelle	Bad Peterstal
Ariwa	Paulusquelle	Bad Rippoldsau
Arkia Mineralwasser	Ried-Quelle	Bad Vilbel
Arkona Quelle	Arkona Quelle	Güstrow
Arnoldi Quelle	Arnoldi Quelle	Warburg-Germete
Arolser "Schloßbrunnen"	Arolser "Schloßbrunnen"	Arolsen
ARRET	Arret-Quelle	Bad Hönningen
Artesia-Quelle	Artesia-Quelle	Reuth bei Erbendorf
ASS	Scharmühlquelle	Bad Vilbel-Gronau
Assindia	Assindia Brunnen 12	Bochum
ASSINDIA	Assindia-Quelle	Haan
Assindia-Mineralwasser	Assindia Quelle	Essen-Kray

Trade description	Name of source	Place of exploitation
Astra	Astra	Bad Vilbel
Auburg-Quelle	Auburg-Quelle	Wagenfeld
Auenwald	St. Cyriakus-Quelle	Wöpse
Augusta-Victoria-Quelle	Augusta-Victoria-Quelle	Löhnberg-Selters
Autenrieder Schloßgartenbrunnen	Autenrieder Schloßgartenbrunnen	Ichenhausen-Autenried
Avanus-Mineralbrunnen	Avanus-Mineralbrunnen	Belm
Azur	Azur Quelle Ortelsdorf	Lichtenau
Azur	Azur-Quelle	Bad Vilbel
Bad Brambacher Mineralquelle	Bad Brambacher Mineralquelle	Bad Brambach
Bad Camberger Taunusquelle	Taunusquelle	Bad Camberg-Oberselters
Bad Driburger	Bad Driburger Mineralquelle I	Bad Driburg
Bad Driburger	Brunnen Eichmilde	Bad Driburg
Bad Driburger Bitterwasser	Marcus-Quelle	Bad Driburg
Bad Honnefer Mineralwasser	Fürstenquelle	Bad Honnef
Bad Kissinger	Bad Kissinger	Bad Kissingen
Bad Liebenwerda	Bad Liebenwerda	Bad Liebenwerda
Bad Liebenzeller	Bad Liebenzeller	Bad Liebenzell
Bad Nauheimer	Bad Nauheimer	Friedberg-Dorheim
Bad Nauheimer Ur-Quelle	Bad Nauheimer Urquelle	Friedberg-Dorheim
Bad Niedernauer Römer-Sprudel	Bad Niedernauer Römer-Sprudel	Rottenburg am Neckar-Bad Niedernau
Bad Nieratz-Quelle	Bad Nieratz-Quelle	Wangen im Allgäu
Bad Pyrmonter	Bad Pyrmonter	Bad Pyrmont
Bad Rappenaue Urquelle	Bad Rappenaue Urquelle	Bad Rappenaue-Bonfeld
Bad Salzschlirfer Mineralwasser	Retzmann-Brunnen	Bad Salzschlirf
Bad Suderoder Mineralbrunnen	Bad Suderoder Mineralbrunnen	Bad Suderode
Bad Vibeler Hermanns Quelle	Bad Vibeler Hermanns Quelle	Bad Vilbel
Bad Vibeler UrQuelle	Bad Vibeler UrQuelle	Bad Vilbel
Bad Windsheimer Urquelle	Bad Windsheimer Urquelle	Bad Windsheim
Badnerland-Quelle	Badnerland-Quelle	Bad Peterstal-Griesbach
Badquelle	Badquelle	Neuenburg-Steinenstadt
Balduin Quelle	Balduin-Quelle	Dreis-Brück
Baldus Quelle	Baldus-Quelle	Löhnberg

Trade description	Name of source	Place of exploitation
Barbarossa-Brunnen	Barbarossa-Brunnen	Sinzig
Baron von Westfalen	Waldborn	Horn-Bad-Meinberg
Baruther Johannesbrunnen	Baruther Johannesbrunnen	Baruth/Mark
Basinus	Bonaris Quelle	Neustadt an der Aisch
Basinus	Sinus-Quelle	Eilenburg
Basinus	Krönungsquelle	Bad Windsheim
Bavaria Quelle	Bavaria Quelle	Utting am Ammersee
BellAir	BellAir-Quelle	Bad Liebenzell
Bellaqua	Franziskusquelle	Bad Peterstal
Bellaqua-Quelle	Bellaqua-Quelle	Schwollen
Bellaris-Quelle	Bellaris-Quelle	Bellheim/Pfalz
Berg Quelle	Berg Quelle	Thalfang
Bergische Waldquelle	Bergische Waldquelle	Haan
Bernadett-Brunnen	Bernadett-Brunnen	Ingolstadt
Biberacher Mineralwasser	Biberacher Mineralquelle	Heilbronn am Neckar
Bietzener Wiesen	Bietzener Wiesen	Merzig
Billetalquelle	Billetalquelle	Reinbek
Bios	Bios Quelle	Stralsund
Birgy	Teuto-Quelle	Bielefeld
Bischofsquelle	Bischofsquelle	Dodow
Biskirchener Karlssprudel	Biskirchener Karlssprudel	Leun-Biskirchen
Bissinger Auerquelle	Aquabella und Auerquelle	Bissingen/Schwaben
Black Forest	Hansjakob-Quelle	Bad Rippoldsau
Blankenburger Wiesenquell	Blankenburger Wiesenquell	Blankenburg/Harz
Bonatur	Gesteinsquelle	Bielefeld
Bonatur	Felsenquelle	Hecklingen-Gänsefurth
Bonatur	Tiefenquelle	Bielefeld
Bonwa Mineralwasser	Bonwa	Bad Rappenuau-Bonfeld
Borna	Borna	Bochum
Brandenburger Felsenquelle	Brandenburger Felsenquelle	Wiesenburg/Mark
Brandenburger Kurfürst-Quelle	Brandenburger Kurfürst-Quelle	Wiesenburg/Mark
Brandenburger Quell	Brandenburger Quell	Diedersdorf

Trade description	Name of source	Place of exploitation
Brandenburger Urstromquelle	Brandenburger Urstromquelle	Baruth/Mark
Brandenburger Waldquelle	Brandenburger Waldquelle	Wiesenburg/Mark
Breisgauer Mineralwasser	Breisgauer Mineralquelle	Neuenburg-Steinenstadt
Brillant	Brillant	Schwollen
Brillant Quelle	Brillant-Quelle	Thalfang
Brohler	Burgbrohlerquelle+C66	Burgbrohl
Brohler Classic	Karlsquelle	Brohl-Lützing
Brohler high light	Quelle Acht	Brohl-Lützing
Brunnthaler	Brunnthaler	Burgheim
Buchhorn Quelle	Buchhorn Quelle	Eberstadt-Buchhorn
Burgenperle	Burgenperle-Quelle	Reutlingen-Rommelsbach
Bürgerfels-Quelle	Bürgerfels-Quelle	Moers
Burg-Quelle	Burg-Quelle	Plaidt
Burgwallbronn	Burgwallbronn	Duisburg-Walsum
Caldener Mineralbrunnen	Caldener Mineralbrunnen	Calden-Westuffeln
Carolinen	Steinborn Quelle	Hecklingen-Gänsefurth
Carolinen®	Urgesteinquelle	Bielefeld
Carolinen®	Urquelle	Bielefeld
Carolinen®	Ursprungsquelle	Bielefeld
Cascada	Cascada	Bad Windsheim
Catharinen Quelle	Catharinen Quelle	Bad Camberg-Oberselters
Cherusker	Cherusker-Quelle	Borgholzhausen
Cherusker Quelle	Cherusker Quelle	Steinheim-Vinsebeck
Christlesee	Christlesee	Oberstdorf
Cilly	Berg-Quelle 1	Neubulach-Liebelsberg
Clarissa	Heinberg-Quelle	Warburg-Germete
Claudius	Claudius	Trappenkamp
Comburg Minerale	Brunnen VII	Schwäbisch Hall
Comburg-Quelle	Michelsbrunnen	Schwäbisch Hall
Cora-Quelle	Cora-Brunnen	Erkrath
Coronet	Coronet	Bochum
Das Neue Überkinger	Überkinger Albquelle	Bad Überkingen

Trade description	Name of source	Place of exploitation
Dauner Mineralwasser	Dauner Quelle I	Daun
Dauner Urquelle	Dauner Quelle III	Daun
Del Bon	Del Bon	Schwollen
Del Bon	Del Bon Quelle	Thalfang
Delta	Delta-Quelle	Steinheim-Vinsebeck
Diamant-Quelle	Diamant-Quelle	Schwollen
Diana	Venus-Quelle	Kißlegg
Diana	Berg-Quelle	Neubulach-Liebelsberg
Diemeltaler Quelle	Diemeltaler Quelle	Warburg-Germete
Dietenbronner	Lazarus-Quelle	Schwendi-Dietenbronn
Domherren-Quelle	Domherren-Quelle	Rhens
Dreibogen-Quelle	Dreibogen-Quelle	Eichendorf-Addorf
Dreikönigsquelle	Dreikönigsquelle	Rheinbrohl
Dreiser	Dreiser	Dreis
Dreiser	Dreiser	Dreis-Brück
Drusus	Naturquelle	Rhens
DRUSUS	Tiefen Quelle	Rhens
Duessel aqua Quelle	Duessel aqua Quelle	Haan
Dunaris-Quelle	Dunaris-Quelle	Daun
Eberstädter	Steinberg-Quelle	Eberstadt-Buchhorn
Eichensteiner Mineralwasser	Eichensteiner Mineralwasser	Naila
Eichenzeller	Eichenzeller Brunnen	Eichenzell-Lütter
Eico-Quelle	Eico-Brunnen	Wallhausen/Württem-berg
Eico-Sprudel und Eico-Quelle	Eico Premium-Quelle	Wallhausen
Eifel-Quelle	Eifel-Quelle	Andernach-Kell
Eifeltaler	Dauner Quelle IV	Daun
Eifeltaler Mineralwasser und Eifeltaler Medium Mineralwasser	Eifeltaler Quelle	Daun
Eins Aqua	Fluva Brunnen Via	Bochum
Eisvogel	Alb Cristall-Quelle	Reutlingen-Rommelsbach
Eisvogel Gourmet	Mineralquelle	Bad Überkingen
Eiszeit-Quell	Eiszeit-Quell	Reutlingen-Rommelsbach
Elements Mineralbrunnen	Elements Mineralbrunnen	Oberscheinfeld

Trade description	Name of source	Place of exploitation
Elisabethen Quelle	Elisabethen Quelle	Rosbach vor der Höhe
Elisabethenquelle	E1-Quelle	Waiblingen-Beinstein
Elisabethen-Quelle	Elisabethen-Quelle	Bad Vilbel
Elitess	Baruth Quelle	Baruth/Mark
Elitess	Schönbornquelle	Bruchsal
ELITESS	Paulusquelle	Bad Rippoldsau
Elsbethen-Quelle	Elsbethen-Quelle	Pfeffenhausen
Eltina Sprudel	Eltina-Quelle	Eberstadt-Buchhorn
Emil-Heinrich-Quelle	Emil-Heinrich-Quelle	Bad Peterstal
Emsland-Quelle	Emsland-Quelle	Haselünne
Emstaler Brunnen	Emstaler Brunnen	Bad Camberg-Oberselters
Engelbert neu	Engelbert neu	Bochum
Engelbert-Brunnen	Engelbert	Bochum
Ensinger Gourmet Quelle	Ensinger Gourmet Quelle	Vaihingen-Ensingen
Ensinger Mineralquelle	Ensinger Mineralquelle Bohrbrunnen E 10	Vaihingen-Ensingen
Ensinger Naturelle	Ensinger Naturelle	Vaihingen-Ensingen
EQUINOX	EQUINOX	Horn-Bad Meinberg
Euregio	Fiorelino	Erfstadt
Euroeau	Euroeau	Schwollen
Europertl	Elfen-Quelle	Haigerloch-Bad Imnau
Europertl	Emil-Heinrich-Quelle	Bad Peterstal Griesbach
Euroquell	Euroquell	Schwollen
Extaler-Mineralquell	Extaler-Mineralquell	Rinteln-Exten
Externstein Quelle	Externstein Quelle	Horn-Bad Meinberg
Eyachtal-Quellen	Eyachtal-Quellen	Horb-Mühlingen
Falkenberg-Quelle	Falkenberg-Quelle	Löhne
Fauna	Quelle 29	Reutlingen-Rommelsbach
Feldquell	Feldquell	Gütersloh
Felicitas	Felicitas	Trappenkamp
Felsensteiner Quelle	Felsensteiner Quelle	Duisburg-Walsum
Felsquelle	Felsquelle	Goslar
Filippo	Filippo Mineralsprudel	Haigerloch-Bad Imnau

Trade description	Name of source	Place of exploitation
Finkenbach-Quelle	Finkenbach-Quelle	Rothenberg/Odenwald-Finkenbach
fit Diamant	Diamant-Quelle	Thalfang
Fläming Felsenquelle	Fläming Felsenquelle	Wiesenburg/Mark
Flensburger Gletscherquelle	Flensburger Gletscherquelle	Flensburg
Fluva-Quelle	Fluva	Bochum
FONSANA	FONSANA	Baruth/Mark
Fontane	Fontane	Kloster Lehnin
Fontanis	Fontanis-Quelle	Sachsenheim-Spielberg
Fontanis	Vitale Quelle Sersheim	Sersheim
Forstetal	Forstetal	Horn-Bad Meinberg
Förstina Sprudel	Förstina Sprudel	Eichenzell-Lütter
Fortis	Fortis	Bochum
Fortuna-Quelle	Fortuna-Quelle	Eichenzell-Lütter
Fortuna-Quelle	Fortuna-Quelle	Friedberg-Dorheim
Franken Brunnen	Hochsteig-Quelle	Eilenburg
Franken Brunnen	Hochstein-Quelle	Neustadt an der Aisch
Franken Brunnen	Silvana-Quelle	Neustadt an der Aisch
Franken Brunnen	Silvana-Quelle	Eilenburg
Franken-Brunnen	Theresien-Quelle	Bad Kissingen
Franziskus-Quelle	Franziskus-Quelle	München
Freyersbacher Mineralwasser	Freyersbacher Mineralquelle	Bad Peterstal-Griesbach
Friedrich Christian Heilquelle	Friedrich Christian Heilquelle	Löhnberg-Selters
Frische Brise	Georgs-Quelle	Goslar-Grauhof
Frische Brise	Graf Bernhard Quelle	Löhnberg
Frischequell	Frische Brise-Quelle	Rhens
Fürst-Bismarck-Quelle	Fürst-Bismarck-Quelle	Aumühle
Fürstenbrunn	Fürstenbrunn	Kloster Lehnin
Fürstenbrunn	Fürstenbrunn	Calvörde
Fürstenfelder Prinzenquelle	Fürstenfelder Prinzenquelle, Brunnen II	Fürstenfeldbruck
Fürstenthaler Quelle	Fürstenthaler Quelle	Berlin
Gänsefurth Schloßquelle	Gänsefurth Schloßquelle	Hecklingen-Gaensefurth
Gebirgsquell	Gebirgsquelle	Rhens

Trade description	Name of source	Place of exploitation
Gemminger Mineralquelle	Gemminger Mineralquelle	Gemmingen
Genoveva Quelle	Genoveva Quelle	Mendig
Georg Hipp Mineralquelle	Georg Hipp Mineralquelle	Pfaffenhofen an der Ilm
Georgsquelle	Georgsquelle	Goslar
Geotaler	Geotaler	Löhne
Germaniabrunnen	Germaniabrunnen	Friedberg-Dorheim
Germeta Quelle	Germeta Quelle	Warburg-Germete
Gerolsteiner	Gerolsteiner	Gerolstein
Gerolsteiner Naturell	Gerolsteiner Naturell	Gerolstein
Gesaris-Brunnen	Gesaris-Brunnen	Oelde
Glashäger	Glashäger	Bad Doberan
Globus	Brunnen XX	Ebersburg-Weyhers Gemarkung Lütter — Flur 5, Flurst. 37 Gemarkung Ebersberg — Flur 3, Flurst. 5/3
Glockenquell	Glockenquell	Laucha
Godehard-Urquelle	Godehard-Urquelle	Husum-Rosendahl
Goldrausch-Brunnen	Goldrausch-Brunnen	Groß-Karben
Göppinger Charlottenquelle	Göppinger Charlottenquelle	Göppingen
Göppinger Mineralwasser	Göppinger Quelle	Göppingen
Graf Metternich	Graf-Metternich-Quelle	Steinheim-Vinsebeck
Graf Metternich Varus-Quelle	Graf Metternich-Varus-Quelle	Steinheim-Vinsebeck
Graf Rudolf-Quelle	Graf Rudolf-Quelle	Wagenfeld
Graf Simeon	Graf Simeon-Quelle	Steinheim-Vinsebeck
Graf-Belrein-Quelle	Graf-Belrein-Quelle	Vaihingen-Ensing
Grafenquelle	Grafenquelle	Osterode am Harz-Förste
Gräfin Annabelle Quelle	Annabelle Quelle 1	Bad Driburg
Graf-Meinhard-Quelle	Graf-Meinhard-Quelle	Gießen-Wieseck
Gralsquelle	Gralsquelle	Saalfeld an der Saale
Granus	Brilliant-Quelle	Wagenfeld
Greifen Sprudel	Greifen-Quelle	Medard/Glan
Griesbacher Mineralquelle	Griesbacher Mineralquelle	Bad Peterstal-Griesbach
Grüneberg Quelle Medium	Grüneberg Quelle	Grüneberg
Güstrower Schlossquell	Güstrower Schlossquell	Güstrow

Trade description	Name of source	Place of exploitation
Gut & Günstig	Erbeskopf-Quelle	Thalfang davon abweichend Quellort: Malborn
Gut & Günstig	Venus-Quelle	Kißlegg
Gut + günstig	Graf-Dodiko-Quelle	Warburg-Germete
gut und günstig (medium, classic)	Schwarzwald Tiefenquell	Wildberg
gut und günstig (still, medium, classic)	Bernhardus-Quelle	Wildberg
Gute Quelle	Brunnen XX	Ebersburg-Weyhers Gemarkung Lütter — Flur 5, Flurst. 37 Gemarkung Ebersberg — Flur 3, Flurst. 5/3
H2ola	Overgahr-Quelle	Warburg-Germete
Haaner Felsenquelle	Neue Haaner Felsenquelle	Haan
Haardtwald Quelle	Haardtwald-Quelle	Thalfang
Haardtwaldquelle	Haardtwaldquelle	Schwollen
Haller Sportquelle	Brunnen IX	Schwäbisch Hall-Heimbach
Haranni-Quelle	Haranni-Quelle	Herne-Holthausen
Hardenstein	Hardenstein-Brunnen	Bielefeld
Harzer Bergbrunnen	Harzer Bergbrunnen	Goslar-Oker
Harzer Grauhof-Brunnen	Harzer Grauhof-Brunnen	Goslar
Harzer Kristall-Brunnen	Harzer Kristall-Brunnen	Langelsheim
Harzer Viktoriabrunnen	Harzer Viktoriabrunnen	Langelsheim
Harzer Weinbrunnen	Harzer Weinbrunnen	Langelsheim
Harz-Quell	Harz-Quell	Bad Harzburg-Bündheim
Hassia-Sprudel	Hassia-Sprudel	Bad Vilbel
Hebe	Hebequelle	Mühringen
Heerbach Mineralbrunnen	Heerbach Mineralbrunnen	Waldaschaff
Heiligenstädter Mineralquelle	Heiligenstädter Mineralquelle	Heilbad Heiligenstadt
Heinrich-Franz-Brunnen	Heinrich-Franz-Brunnen	Pilsting-Großköllnbach
Heinrich-Franz-Quelle	Heinrich-Franz-Quelle	Pilsting-Großköllnbach
Helenen Quelle	Helenen Quelle	Rinteln
Helfensteiner	Quelle 29	Reutlingen-Rommelsbach
hella	hella	Trappenkamp
Hellweg-Quelle Mineralbrunnen	Hellweg-Quelle Mineralbrunnen	Bochum
Heppinger	Heppinger	Bad Neuenahr-Ahrweiler

Trade description	Name of source	Place of exploitation
Herrather Jungbrunnen	Herrather Jungbrunnen	Mönchengladbach
Herzog	Herzog	Bochum
Herzog Life	Barbara	Bochum
Hessberger	Hessberger Mineralbrunnen	Heßberg
Hessental Mineralwasser	Ried-Quelle	Bad Vilbel
Hetali	Hetali	Essen
Himmelsberger	Himmelsberger	Jessen (Elster)
Hirschquelle vital	Hirschquelle	Bad Teinach-Zavelstein
Hocheifel Quelle	Florana	Gerolstein (Munterley)
Hochfrankenquelle	Hochfrankenquelle	Naila-Hölle
Hochwald-Sprudel	Hochwald-Sprudel	Schwollen
Hofgut	Fürstenperle	Trappenkamp
Hofgut	Marinus	Trappenkamp
Ho-Ga	Vividas	Sittensen
Hohenloher Naturparkquelle	Hohenloher Naturparkquelle	Mainhardt-Baad
Hohenloher Sprudel	Hohenloher Quelle	Wallhausen
Hohenquelle	Amalienbrunnen	Bad Doberan
Hohenstein Mineralquelle	Hohenstein Mineralquelle	Hessisch Oldendorf-Zersen
Höllensprudel	Höllensprudel	Naila-Hölle
Hubertus Sprudel	Hubertus-Quelle	Bad Hönningen
Humboldtquelle	Humboldtquelle	Naila-Hölle
Hunsrück Quelle	Hunsrück-Quelle	Thalfang
Hunsrück-Quelle	Brunnen III und VII	Schwollen
Ileburger Sachsen Quelle	Sachsen Quelle	Eilenburg
Imnauer Apollo	Apollo-Quelle	Haigerloch-Bad Imnau
Imnauer Fürstenquellen Sprudel	Imnauer Fürstenquellen	Haigerloch-Bad Imnau
Ines-Quelle	Brunnen 2, Brunnen 4	Löhne
Irenen-Quelle	Irenen-Quelle	Aspach-Rietenau
Iris-Quelle	Brunnen Uhlenbach, HH-Brunnen 3	Löhne
Isselhofer	Isselhofer	Bielefeld
Isselhorster Mineralbrunnen	Isselhorster Mineralbrunnen	Gütersloh
Ja!	Brunnen XX	Ebersburg-Weyhers Gemarkung Lütter — Flur 5, Flurst. 37

Trade description	Name of source	Place of exploitation
		Gemarkung Ebersberg — Flur 3, Flurst. 5/3
Ja!	Schönbornquelle	Bruchsal
ja!	Paulusquelle	Bad Rippoldsau
Jamina-Mineralwasser	Ried-Quelle	Bad Vilbel
Jebenhauser Sprudel	Jebenhauser Schloß-Quelle	Göppingen-Jebenhäusen
Jesuiten-Quelle	Jesuiten-Quelle	Ingolstadt
Jodquelle	Alt-Bürgerbrunn	Moers
Johannisquelle	Johannisquelle	Bad Dürrheim
Johanniter Quelle	Johanniter Quelle	Calden-Westuffeln
Juliusshaller	Juliusshaller	Bad Harzburg
Jungbrunnen	Jungbrunnen	Uelzen
Justus	Justus-Brunnen	Eichenzell-Lütter
K3 Mineralwasser	Mönchsbrunnen	Bad Vilbel
Kaiser Friedrich Quelle	Kaiser Friedrich Quelle	Offenbach am Main
Kaiser-Friedrich-Quelle	Kaiser-Friedrich-Quelle	Bornheim-Roisdorf
Kaiser-Friedrich-Quelle	Kaiser-Friedrich-Quelle	Groß-Karben
Kaiser-Ruprecht-Quelle	Kaiser-Ruprecht-Quelle	Rhens
Karat	Teutoburger Felsenquelle	Steinhagen/Westfalen
Karl-Marien-Quelle	Karl-Marien-Quelle	Plaue
Karlsteiner Mineralwasser	Karlsteiner Mineralwasser	Bad Reichenhall
Karlsquelle	Karlsquelle	Bad Griesbach im Rottal
Karlsquelle	Karlsquelle	Bad Peterstal-Griesbach
Kastell	Kastell	Mülheim an der Ruhr
Kastell Neu	Neue Schloßquelle	Essen
Katlenburger Burgberg Quelle	Katlenburger Burgberg Quelle	Katlenburg am Harz-Lindau
Katlenburger Mineralbrunnen	Katlenburger Mineralbrunnen	Katlenburg am Harz-Lindau
Keltenquelle	Keltenquelle	Schwollen
Kiara Quelle	Kiara Quelle	Güstrow
Kimi Mineralwasser	Kimi-Quelle	Heilbronn am Neckar
Kisslegger	Allgäuquelle	Kißlegg
Kleeberger	Kleeberger	Belm
Klick	Klick	Bochum-Riemke

Trade description	Name of source	Place of exploitation
Klick	Ruhrtal	Bochum
Klosterquelle	Klosterquelle	Aspach-Rietenau
Klosterquelle	Gebirgsquelle	Rhens
Kneipp	Kneipp-Quelle	Bad Kissingen
Knetzgauer Steigerwald Naturbrunnen	Knetzgauer Steigerwald Naturbrunnen	Knetzgau
Kondrauer	Antonien-Quelle	Waldsassen-Kondrau
Kondrauer	Bayern-Quelle	Waldsassen-Kondrau
Kondrauer	Diepold-Quelle	Waldsassen-Kondrau
Kondrauer	Gerwig-Quelle	Waldsassen-Kondrau
König-Georg-Quelle	König-Georg-Quelle	Selters-Niederselters
König-Otto-Sprudel	König-Otto-Sprudel	Wiesau-König Otto-Bad
Königsquell	Königsquell	Calvörde
Kreuzquelle	Kreuzquelle	Wölfersheim-Berstadt
Kreuzwaldquelle	Kreuzwaldquelle	Haan
Kreuzwald-Quelle	Kreuzwald-Quelle	Wegberg-Wildenrath
Kringeller Dachsborg-Quelle	Kringeller Dachsborg-Quelle	Hutthurm-Kringell
Kristall	Kristall-Quelle	Andernach
Kristallperle	Brunnen 4	Heilbronn am Neckar
Kristians Quell	Kristians Quell	Diedersdorf
Kronenquelle	Kronenquelle	Moers
Kronia-Quelle	Kronia-Quelle	Bad Vilbel
Kronsteiner Felsenquelle	Kronsteiner Brunnen	Erkrath
Kronsteiner stille Quelle	Kronsteiner Brunnen	Erkrath
Kronthal-Quelle	Kronthal-Quelle	Kronberg-Kronthal
Krumbach Naturell	Krumbach Naturell	Kißlegg
Krumbach Office Box	Office Box	Altendiez
Krumbachquelle	Krumbachquelle	Kißlegg
Kurpark	Renchtalquelle	Bad Peterstal
Kurpark	Paulusquelle	Bad Rippoldsau
L'eau Sans Souci	L'eau Sans Souci	Bad Liebenwerda
Labertaler Sebastiani-Brunnen	Labertaler Sebastiani-Brunnen	Schierling
Labertaler Stephanie-Brunnen	Labertaler Stephanie-Brunnen	Schierling

Trade description	Name of source	Place of exploitation
Lago	Lago	Bochum
Lahnfelsquelle	Lahnfelsquelle	Leun-Biskirchen
Lahnperle	Lahnstein II	Lahnstein
Lahnsteiner	Lahnstein I	Lahnstein
Lamscheider Stahlbrunnen	Lamscheider Stahlbrunnen	Leiningen-Lamscheid
Landliebe	Landliebequelle	Bad Peterstal Griesbach
Landliebe	Landliebequelle	Haigerloch-Bad Imnau
Lauchaer Mineralbrunnen	Lauchaer Mineralbrunnen	Laucha
Lauchstädter	Lauchstädter	Bad Lauchstädt
Laurentius	Laurentius-Quelle	Großerlach
Laurentius Quirli	Quirli	Bad Peterstal Griesbach
Lausitzer	Lausitzer	Bad Liebenwerda
Lebensquell	Lebensquell	Hornberg
Leester Mineralquelle	Leester Mineralquelle	Weyhe-Leester
Leonie	Overgahr-Quelle	Warburg-Germete
Lesmona	Kilians-Quelle	Bad Pyrmont (Quellort: Lügde, NW)
Lesmona	St. Cyriakus-Quelle	Wöpse
LESMONA	St. Rimbart-Quelle	Bremen
LESMONA	Kilians-Quelle	Bad Pyrmont
Lesumer	St. Rimbart-Quelle	Bremen
Lesumer Stille Urquelle	Lesumer Urquelle	Bremen-Lesum
Lesumer Urquelle	Lesumer Urquelle	Bremen-Lesum
Levia-Quelle	Levia-Quelle	Treuchtlingen
LIBU-Quelle	LIBU-Quelle	Bochum
Lichtenauer Mineralquelle	Lichtenauer Mineralquelle	Lichtenau
Lidwinen-Brunnen	Lidwinen-Brunnen	Pilsting-Großköllnbach
Liederbacher Quelle	Brunnen 1	Liederbach
Lieler Cristale	Lieler Cristale	Schliengen-Liel
Lieler Quelle	Lieler Quelle	Schliengen-Liel
Lieler Schloßbrunnen	Lieler Schloßbrunnen	Schliengen-Liel
Lioba-Quelle	Lioba-Quelle	Bad Liebenzell
Lohberg	Lohberg Brunnen V	Bochum
Löwenquelle	Löwenquelle	Bad Nauheim-Schwalheim

Trade description	Name of source	Place of exploitation
Löwensprudel	Löwensprudel	Rottenburg am Neckar-Obernau
Löwensteiner	Löwensteiner Mineralquelle	Löwenstein
Ludwigsquelle	Ludwigsquelle	Greven bei Boizenburg
Luisen-Brunnen	Luisen-Brunnen	Frankfurt am Main-Nieder-Erlenbach
Lüner Quelle	Lüner Quelle	Lüneburg
Lüttertaler	Adello	Eichenzell-Lütter / Gemarkung Lütter
Magdalenen-Brunnen	Magdalenen-Brunnen	Sulzbach am Main-Soden
Magnus-Quelle	Gute-Laune-Quelle	Norderstedt
Malborner Sprudel	St. Nikolaus-Quelle	Malborn
Mandelberg-Brunnen	Mandelberg-Brunnen	Riedenburg
Marco Heilquelle	Marco Quelle	Aspach-Rietenau
Margareten-Quelle	Margareten-Quelle	Bochum
Margarethen-Quelle	Margarethen-Quelle	Goslar-Grauhof
Margonwasser	Quelle 1903	Burkhardswalde bei Pirna
Margonwasser	Margonwasser	Lichtenau
Maria-Theresia-Brunnen	Maria-Theresia-Brunnen	Moos/Niederbayern
Marien-Brunnen	Marien-Brunnen	Borgholzhausen
Marienquelle	Marienquelle	Göppingen-Jebenhausen
Mariusquelle	Marius Quelle	Aspach-Rietenau
Markgrafen-Quelle	Markgrafen-Quelle	Sachsenheim-Spielberg
Markgräfler Mineralwasser	Markgräfler Mineralquelle	Neuenburg-Steinenstadt
Märkisch Kristall Classic	Märkisch Kristall	Grüneberg
Markt-Quelle	Markt-Quelle	Oberscheinfeld
Markus-Brunnen	Markus-Brunnen	Bornheim-Roisdorf
Mathilden Quelle	Mathilden Quelle	Rosbach vor der Höhe
Matthias-Brunnen	Matthias-Brunnen	Pilsting-Großköllnbach
Maximilian-Brunnen	Maximilian-Brunnen	Buttenheim
Mayen-Quelle	Mayen-Quelle	Bad Vilbel
Mecklenburger Quelle	Mecklenburger Quelle	Dargun
Mephistoquelle	Mephistoquelle	Bad Aachen
Mercator-Quelle	Mercator-Quelle	Wesel
Merkur	Teutoburger Steinquelle	Bielefeld

Trade description	Name of source	Place of exploitation
Merkur	Sparrenquelle	Bielefeld
Merkur	Vitus Quelle	Bielefeld
Merkur	Laurentius Quelle	Hecklingen-Gänsefurth
Merkur	Wiesenquelle	Bielefeld
Merkur aus der Tiefenquelle	Tiefenquelle	Güstrow
mineau	Gräfin-Katharina-Quelle	Homfeld
mineau®	Huddaeus-Quelle	Bad Pyrmont (Quellort: Lügde)
Minell	Teutoburger Waldquelle	Bielefeld
Minell/ Teutonia Quelle	Teutonia Quelle	Bielefeld
Minerva	Victoria II	Lahnstein
Minetta	Minetta	Bad Liebenwerda
Mona	Antonius-Quelle	Warburg-Germete
Mönchsbrunnen	Mönchsbrunnen	Bad Vilbel
Monolith	Thalquelle	Thalfang
Move	Move	Höhbeck-Pevesdorf
Mozart-Quelle	Mozart-Quelle	Augsburg
Mühlenbergquelle	Mühlenbergquelle	Bad Pyrmont
Mühringer Schlossquelle	Schlossquelle 1	Mühlingen
Münchner Löwen-Quelle	Münchner Löwen-Quelle	München
Napoleon Mineralbrunnen Apart	Napoleon Mineralbrunnen Apart	Schierling
Napoleon Mineralbrunnen Esprit	Napoleon Mineralbrunnen Esprit	Schierling
Nature & Cool	FrISChe Brise Quelle	Rhens
naturSelzer	Brunnen V	Groß-Karben
Nera	Nera	Bochum
Nestlé Pure Life	Eschen-Quelle	Löhnberg
Nestlé Pure Life	Zedern-Quelle	Aumühle
Nettetalers-Sprudel	Nettetalers-Sprudel	Plaidt
Neue-Otto-Quelle	Neue-Otto-Quelle	Wiesau-König Otto-Bad
Neumarkter Mineralbrunnen	Neumarkter Mineralbrunnen	Neumarkt in der Oberpfalz
Neumarkter Wildbad	Neumarkter Wildbad	Neumarkt in der Oberpfalz
Neuselters Mineralquelle	Neuselters 1	Löhnberg
Niederrieder	Niederrieder Quelle	Niederrieden

Trade description	Name of source	Place of exploitation
noch nicht festgelegt	Quelle 33	Reutlingen-Betzingen
Noé-Quelle	Noé	Erfstadt
NordQuell	NordQuell	Trappenkamp
Nordquell	Nordquell	Calvörde
Notaris	Mineralquelle MQIX	Bornheim-Roisdorf
Nur hier-Quelle	Nur hier-Quelle	Hamburg
Nürburg-Quelle	Nürburg-Quelle	Dreis-Brück
Oberharzer Brunnen	Oberharzer Brunnen	Altenau/Oberharz
Oberlausitzer Mineralwasser	Oberlausitzer Mineralwasser	Oppach
Oberselters Mineralbrunnen	Oberselters Mineralbrunnen	Bad Camberg-Oberselters
Oberselters Prinzenquelle	Oberselters Prinzenquelle	Bad Camberg-Oberselters
Odenwald-Quelle Naturel	Naturpark Mineralquelle	64646 Heppenheim
Odenwald-Quelle traditionell	Tradius Quelle	Heppenheim an der Bergstraße
Opalis-Quelle	Owalis-Quelle	Oberscheinfeld
Oppacher Mineralquelle	Oppacher Mineralquelle	Oppach
Oranien-Quelle	Oranien-Quelle	Brohl-Lützing
Oranka-Quelle	Oranka-Quelle	Reinbek
Orion Quelle	Orion Quelle	Rosbach vor der Höhe
Osta-Mineral	Osta-Mineralbrunnen	Dingsleben
Paradiesquelle	Paradiesquelle	Bad Überkingen
Parkbrunnen	Parkbrunnen	Essen-Kray
Paul-Sybillen-Quelle	Paul-Sybillen-Quelle	Bad Liebenzell
Perling	Tiefen-Quelle	Rhens
Petersquelle	Petersquelle	Bad Peterstal-Griesbach
Peterstaler	Peterstaler Mineralquelle	Bad Peterstal-Griesbach
Petrusquelle	Petrusquelle	Siegsdorf
Pfälzer Silberbrunnen	Pfälzer Silberbrunnen	Medard/Glan
Polarquelle	Polarquelle	Großerlach
Pommernquelle	Pommernquelle	Bad Doberan
Primaqua, Aying St. Andreas-Quelle	Primaqua, Aying St. Andreas-Quelle	Aying
Pur Born	PurQuell	Dreis-Brück
Pyrazer Waldquelle	Pyrazer Waldquelle	Thalmässing
Q 3 Mineralquelle	Q 3 Mineralquelle	Oppach

Trade description	Name of source	Place of exploitation
Q 4	Top Quell	Heppenheim an der Bergstraße
q2	q2	Husum-Rosendahl
Quartus Quelle	Quartus Quelle	Groß Wittensee
Quelle 6	Quelle 6	Bad Peterstal/ Schwarzwald
Quelle Acht	Quelle Acht	Bornheim-Roisdorf
Quelle Acht	Quelle Acht	Brohl-Lützing
QuellQ-Pur	Löwensprudel	Rottenburg am Neckar-Obernau
Rabenstein-Quelle	Rabenstein-Quelle	Wiesenburg/Mark
Raffelberger aus der Königsteiner Quelle	Raffelberger aus der Königsteiner Quelle	Mülheim an der Ruhr
Raffelberger Mineralbrunnen	Raffelberger Mineralbrunnen	Mülheim an der Ruhr
Randegger Ottilien-Quelle	Randegger Ottilien-Quelle	Gottmadingen-Randegg
Rangau Quelle	Rangau Quelle	Bad Windsheim
Rappen-Quelle	Rappen-Quelle	Kutzenhausen
Ravenna-Brunnen	Ravenna-Brunnen	Borgholzhausen
Regensteiner Mineralbrunnen	Regensteiner Mineralbrunnen	Blankenburg/Harz
Reinbeker Klosterquelle	Reinbeker Klosterquelle	Reinbek
Reinoldus	Reinoldusquelle	Duisburg
Reinoldus-Brunnen	Reinoldus-Brunnen	Dortmund
Reinsteiner Quelle	Reinsteiner Quelle	Duisburg-Walsum
Remstaler	Remstalquelle	Waiblingen-Beinstein
Remus-Quelle	Remus-Quelle	Niederrieden
Renata-Quelle	Renata-Quelle	Rothenberg/Odenwald-Finkenbach
Renchtalquelle	Renchtalquelle	Bad Peterstal
Rennsteigsprudel	Rennsteigsprudel	Schmalkalden-Haindorf
Residenz-Quelle	Residenz-Quelle	Bad Windsheim
Rheinfels Quelle	Rheinfels Quelle	Duisburg-Walsum
Rheinfels Urquell	Rheinfels Urquell	Duisburg-Walsum
Rheinfürst-Quelle	Rheinfürst-Quelle	Erkrath
Rheinsberger Preussenquelle	Rheinsberger Preussenquelle	Rheinsberg
Rheintalquelle	Rheintalquelle	Brohl-Lützing
Rhenser Mineralbrunnen	Rhenser Mineralbrunnen	Rhens
Rhodium	Rhodium	Burgbrohl

Trade description	Name of source	Place of exploitation
RhönSprudel	RhönSprudel	Eichenzell-Lütter / Gemarkung Lütter Ebersburg-Weyhers / Gemarkung Weyhers
Rick	Rickertsen-Quelle	Reinbek
Rickertsen-Quelle 2	Rickertsen-Quelle 2	Reinbek
Riechenberger Klosterquelle	Riechenberger Klosterquelle	Goslar
Riedbach Quelle	Riedbach Quelle	Breuna (Quellort Wolfhagen)
Ried-Quelle	Ried-Quelle	Bad Vilbel
Rietenauer Dilleniusquelle	Dilleniusquelle	Aspach-Rietenau
Rietenauer Heiligenthalquelle	Heiligenthalquelle	Aspach-Rietenau
Rilchinger	Rilchinger	Kleinblittersdorf
Rilchinger Amandus-Quelle	Rilchinger Amandus-Quelle	Kleinblittersdorf
Rilchinger Gräfin-Mariannen-Quelle	Rilchinger Gräfin-Mariannen-Quelle	Kleinblittersdorf
Rippoldsauer	Rippoldsauer Mineralquelle	Bad Rippoldsau
Rohrauer Friedrichsquelle	Rohrauer Friedrichsquelle	Gärtringen-Rohrau
Roisdorfer	NeuRoisdorfer	Bornheim-Roisdorf
Romanis	Romanis-Quelle	Bad Vilbel
Romanis	Romanis-Quelle	Frankfurt am Main-Berkersheim
Romanis Quelle	Romanis Quelle	Rosbach vor der Höhe
Romberg Classic Quelle	Romberg Quelle	Dortmund
Römerwall Quelle	Römerwall Quelle	Duisburg-Walsum
Rosbacher Naturell	Rosbacher Naturell	Rosbach vor der Höhe
Rosbacher Quelle	Rosbacher Quelle	Rosbach vor der Höhe
Rosbacher Urquelle	Rosbacher Urquelle	Rosbach vor der Höhe
Rottaler Mineralbrunnen	Rottaler Mineralbrunnen	Bad Birnbach/Rottal
Rudolf-Quelle	Rudolf-Quelle	Eichenzell-Lütter
Ruffini-Quelle	Ruffini-Quelle	Landshut-Achdorf
Sailauffer Mineralbrunnen	Sailauffer Mineralbrunnen	Sailauf/Spessart
Sailingsquelle	Sailingsquelle	Pechbrunn
Salinger-Bronnen	Salinger-Bronnen	Essen
Salustra	Salustra-Quelle	Bad Vilbel
Salutaris	Salutaris	Bad Vilbel
Salvus	Salvus Quelle	Emsdetten
Sankt Martin	Sankt Martin	Bochum

Trade description	Name of source	Place of exploitation
Sanssouci	Sanssouci	Diedersdorf
SAPS	SAPS-Quelle	Neumarkt in der Oberpfalz
Saskia	Saskia Quelle Jessen	Jessen (Elster)
Saskia	Saskia Quelle Leißling	Leißling
Saskia Quelle	Saskia Quelle	Kirkel
Saskia Quelle Löningen	Saskia Quelle Löningen	Löningen
Saturn-Quelle	Saturn-Quelle	Bad Vilbel
Sauerborn	Sauerborn	Plaidt
Sawell	Sawell Quelle	Emsdetten
Saxonia Quelle	Saxonia Quelle	Eilenburg
Schatzquelle	Schatzquelle	Bad Brückenau
Schildtaler Mineralquell	Schildtaler Mineralquell	Dodow
Schillerbrunnen	Schillerbrunnen	Bad Lauchstädt
Schloss Quelle Friedrichroda Mineralreich	Reinhardtbrunn	Friedrichroda
Schloßberg-Quelle	Schloßberg-Quelle	Eichendorf-Addorf
Schloßblick	Schloßblick	Leißling
Schlossquelle	Brunnen VIII	Löwenstein
Schloßquelle	Schloßquelle	Essen-Borbeck
Schönborn Mineralwasser	Schönbornquelle	Bruchsal
Schönborn-Quelle	Schönborn-Quelle	Bruchsal
Schönrainquelle	Quelle 29	Reutlingen-Rommelsbach
Schurwaldsprudel	Schurwald-Quelle	Urbach/Rems
Schwabenquelle	Schwabenquelle	Göppingen
Schwalbacher Mineralbrunnen	Schwalbacher Mineralbrunnen	Schöffengrund-Schwalbach
Schwalheimer Säuerling	Schwalheimer Säuerling	Bad Nauheim-Schwalheim
Schwarzachtaler	Schwarzachtaler	Gessertshausen
Schwarzenberg Quelle	Schwarzenberg Quelle	Oberscheinfeld
Schwarzwald Quirli-Quelle 2	Schwarzwald Quirli-Quelle 2	Bad Peterstal-Griesbach
Schwarzwaldperle Quelle	Schwarzwaldperle Quelle	Bad Peterstal
Schwarzwaldquelle	Schwarzwaldquelle	Bad-Peterstal-Griesbach
Schwarzwaldsprudel	Schwarzwaldsprudel	Bad Peterstal-Griesbach
Schwollener Sprudel	Schwollener Sprudel	Schwollen
Sebastianquelle	Hermersberg IV	Bad Peterstal

Trade description	Name of source	Place of exploitation
Sebastian-Quelle	Sebastian-Quelle	Buttenheim
Selters	Selters	Selters-Niederselters
Selters Mineralquelle	Naturelle	Gemeinde Löhnberg/Gemarkung Selters
Selters-Mineralquelle	Selters-Mineralquelle	Löhnberg-Selters
Seltina-Mineralbrunnen	Seltina-Mineralbrunnen	Dortmund
Seltrisa	Seltrisa	Selters-Niederselters
Severin Quelle	Severin Quelle	Gemarkung Langenamming, Flur-Nr. 432, Osterhofen
Shop	Shop	Bochum
Siebers-Quelle	Siebers-Quelle	Markt Weiler-Simmerberg
Siegfried-Quelle	Siegfried-Quelle	Erkrath
Silberbrunnen	Silberbrunnen-Quelle	Reutlingen-Rommelsbach
Silberquelle	Silberquelle	Bad Harzburg
Silenca-Quelle	Silenca-Quelle	Markt Schwaben
Silva Nigra	Berg-Quelle	Neubulach-Liebelsberg
Sinziger	Sinziger	Sinzig
Sodenthaler Magdalenen-Brunnen	Sodenthaler Magdalenen-Brunnen	Sulzbach am Main-Soden
Sodenthaler Mineral-Quelle	Sodenthaler Mineral-Quelle	Sulzbach am Main-Soden
Sodenthaler-Echter-Quelle	Sodenthaler-Echter-Quelle	Sulzbach am Main-Soden
Sohlander Blauborn	Sohlander Blauborn-Quelle	Oppach
Sohler Mineralbrunnen	Sohler Mineralbrunnen	Sohl bei Adorf/Vogtland
Soli	Soli	Bochum
Sollinger Brunnen	Sollinger Brunnen	Bodenfelde/Weser
Sophie Charlotte	St. Georg-Quelle	Norderstedt-Glashütte
Sophien-Quelle	Sophien-Quelle	Bad Peterstal
Spessart-Quelle	Spessart-Quelle	Biebergemünd-Rosbach
Spreequell	Spreequell	Bad Liebenwerda
St. Anna Quelle	St. Anna Quelle	Bad Windsheim
St. Ansgari-Quelle	St. Ansgari-Quelle	Norden
St. Christophorus	Göppinger Christophsquelle	Göppingen
St. Georgsquelle	St. Georgsquelle	Ruhpolding
St. Godehard Mineralbrunnen	St. Godehard Mineralbrunnen	Weyhe-Dreye
St. Jakobus	St. Jakobus	Kloster Lehnin

Trade description	Name of source	Place of exploitation
St. Lambertus	St. Lambertus	Breuna (Quellort Wolfhagen)
St. Leonhardsquelle	St. Leonhardsquelle	Stephanskirchen/Simssee
St. Medardus-Quelle	St. Medardus-Quelle	Medard/Glan
St. Severin Quelle	St. Severin Quelle	Osterhofen
St. Verenen-Quelle	St. Verenen-Quelle	Lindau-Reutin/Bodensee
St. Willehad Mineralbrunnen	St. Willehad Mineralbrunnen	Weyhe-Dreye
St.-Bernhard-Quelle	Brunnen 5, Fl. Nr. 371, Gemarkung Aldersbach	Aldersbach
Staatlich Bad Brückenauer Mineralbrunnen	König-Ludwig-I-Quelle	Staatsbad Bad Brückenau
Staatlich Bad Meinberger	Bad Meinberger	Horn-Bad Meinberg
Staatlich Fachingen	Staatlich Fachingen	Fachingen
Stadion	Stadion	Bochum
Stauferquelle	Stauferquelle	Göppingen
Stegbach Quelle	Stegbach Quelle	Wallhausen/Württemberg
Steigerwald-Mineralbrunnen	Steigerwald	Oberscheinfeld
Steinau Quelle	Steinau Quelle	Schwollen
Steinbronn	Steinbronn	Bochum
Steinfelsquelle	Steinfelsquelle	Güstrow
Steinfelsquelle	Steinfelsquelle	Bielefeld
Steinquell	Steinquell	Bochum
Steinquelle	Steinquelle	Goslar
Steinquelle	Steinquelle	Friedberg-Dorheim
Steinsieker	Steinsiek	Löhne
Stella	Stella	Bochum
Stemweder Berg Quell	Stemwederbergquelle	Stemwede-Oppendorf
Stiftsquelle	Stiftsquelle	Essen
Stralsunder	Stralsunder	Stralsund
Straubinger Johannesbrunnen	Straubinger Johannesbrunnen	Straubing
Sturmius Mineralwasser	Martinybrunnen 3	Bad Salzschlirf
Syburg	Syburg Quelle	Wagenfeld
Sylt-Quelle	Sylt-Quelle	Rantum/Sylt
Täfert-Quelle	Täfert-Quelle	Bad Windsheim
Talquelle	Talquelle	Goslar-Oker

Trade description	Name of source	Place of exploitation
Tannquelle	Tannquelle	Löhnberg-Selters
TAUfrisch	TAUfrisch-Kirkel	Kirkel
Taunus-Brunnen	Brunnen 3	Liederbach
Tausendwasser	Tausendwasser	Schwollen
tegut...	Brunnen XX	Ebersburg-Weyhers <u>Gemarkung Lütter</u> — Flur 5, Flurst. 37 <u>Gemarkung Ebersberg</u> — Flur 3, Flurst. 5/3
Teinacher	Teinacher Mineralquelle	Bad Teinach-Zavelstein
Terra	Terra-Quelle	Friedrichroda
Terra Quelle	Terra Quelle	Bad Doberan
Terraquelle	Terraquelle	Lichtenau
Terra-Quelle	Terra-Quelle	Mendig
Teusser	Teusser Mineralbrunnen	Löwenstein
Teusser-Brunnen II	Teusser-Brunnen II	Löwenstein
Teutoburger Bergquelle	Teutoburger Bergquelle	Bielefeld
Thalquell	Thalquelle	Schwollen
Thannhauser Mineralquell	Brunnen Postbräu Thannhausen	Thannhausen/Schwaben
Thüringer Burgquelle	Thüringer Burgquelle	Friedrichroda
Thüringer Heidequell	Thüringer Heidequelle	Hütten über Pößneck
Thüringer Reinsbergquelle	Reinsberg-Quelle	Plaue
Thüringer Saal Queen	Thüringer Heidequelle	Hütten über Pößnek
Thüringer Waldquell	Thüringer Waldquell	Schmalkalden-Aue
Tiefenharzer Bergwaldquell	Tiefenharzer Bergwaldquell	Langelsheim
Tiefenherster Bergwaldquelle	Caspar-Heinrich-Quelle 2	Bad Driburg
TIP	Tiefenfelsquelle	Bielefeld
Tofi	Tofi-Quelle	Bad Vilbel
tofiquelle	Brunnen Westuffeln IV	Calden-Westuffeln
Tönissteiner Sprudel	Tönissteiner Sprudel	Andernach-Kell
Top frisch	top-frisch-Quelle	Eichenzell-Lütter
Top Quell Classic und Top Quell Medium	Q 4	Heppenheim
Treenetaler	Treenetaler	Tarp
Ü	Mineralquelle	Bad Überkingen

Trade description	Name of source	Place of exploitation
Überkinger	Überkinger	Bad Überkingen
Ulmtaler Klosterquell	Ulmtaler Klosterquelle	Löhnberg
Ulmtal-Quelle	Ulmtal-Quelle	Löhnberg-Selters
Ulrich-Quelle	Brunnen VII	Schwäbisch Hall-Heimbach
Unser gutes Husumer	Unser gutes Husumer	Mildstedt
Urbacher Sprudel	Herminenquelle	Urbach/Rems
Urbanus-Mineralwasser	Urbanus-Mineralwasser	Mendig
Urquell	Urquell	Bad Harzburg
Ursteiner	Ursteiner	Mühlheim an der Ruhr
Urstrom Quelle	Urstrom Quelle	Breuna (Quellort Wolfhagen)
Urstromquelle	Urstromquelle	Baruth/Mark
Urstromtaler	Urstromtaler	Baruth/Mark
Ursula	Brunnen XX	Ebersburg-Weyhers Gemarkung Lütter — Flur 5, Flurst. 37 Gemarkung Ebersberg — Flur 3, Flurst. 5/3
Ustersbacher Wita-Quelle	Ustersbacher Wita-Quelle	Gemarkung/Gemeinde Ustersbach, Fl.Nr. 39
Uttinger Keltenbrunnen	Uttinger Keltenbrunnen	Utting am Ammersee
Venus Mineralwasser	Ried-Quelle	Bad Vilbel
Veris	Wiesenquelle	Kißlegg-Kochs
Vesalia-Quelle	Vesalia-Quelle	Wesel
Vest-Quell	Vest-Quell	Essen
Victoria	Victoria I	Lahnstein
Vilsa-Brunnen	Vilsa-Brunnen	Bruchhausen-Vilsen
Vinsebecker Sprudel	Vinsebecker Säuerling	Steinheim-Vinsebeck
Vitalbrunnen	Vitalbrunnen	Baruth/Mark
Vitalitasia	Waldquelle	Bad Teinach-Zavelstein
VITAQUA	VITAQUA	Breuna (Quellort Wolfhagen)
Vitrex (classic)	Schwarzwald Tiefenquell	Wildberg
Vitrex (naturelle, naturelle sport)	Seewald-Quelle	Wildberg
Viva con Agua	Viva con Agua	Mildstedt
Vivre	Vivre	Naila
Vogelsbergbrunnen	Brunnen III	Alsfeld
Volkmarsen Sauerbrunnen	Brunnen II	Volkmarsen

Trade description	Name of source	Place of exploitation
Volkmarser Mineralbrunnen aus der Kugelsburg-Quelle	Kugelsburg-Quelle	Calden-Westuffeln
Vulkanis	Balduin-Quelle	Dreis-Brück
Vulkanpark-Quelle Eifel	Vulkanpark-Quelle Eifel	Burgbrohl
Vulkan-Quelle	Vulkan-Quelle	Dreis-Brück
Waldecker Mineralwasser	Brunnen III	Volkmarsen
Waldquelle	Waldquelle	Kirkel
Waldquelle	Waldquelle	Hecklingen-Gänsefurth
Waldquelle	Waldquelle	Goslar
Waldsteinquelle	Waldsteinquelle IV	Bad Brambach
Walita	Brunnen I	Volkmarsen
Warburger Waldquell	Warburger Waldquell	Warburg-Germete
Weid-Quelle	Weid-Quelle	Bad Windsheim
Weisensteiner Quelle	Brunnen S2, S8	Schwollen
Weismainer Mineralbrunnen (spritzig und still)	Püls-Bräu 2003	Weismain (Landkreis Lichtenfels)
Weissenberger Quelle	Weissenberger Quelle	Bad Dür rheim
Wenden Quelle	Wenden Quelle	Dodow
Werbelner Bachtal	Werbelner Bachtal	Völklingen
Wernarzer Heilquelle	Wernarzer Heilquelle	Bad Brückenau
Werretaler	Werretaler	Löhne
Westerwaldquelle	Westerwaldquelle	Leun-Biskirchen
Westfalenborn	Westfalenborn-Quelle	Steinheim-Vinsebeck
Westfalenborn	Fluva	Bochum
Weyher Mineralbrunnen	Weyher Mineralbrunnen	Weyhe-Dreye
Weyhser Mineralbrunnen	Weyhser Mineralbrunnen	Ebersburg-Weyhers
Widukind Quelle	Westfalenborn	Borgholzhausen
Wiesenbach-Brunnen	Wiesenbach-Brunnen	Thierhaupten-Unterbaar
Wiesenburger Felsenquelle	Wiesenburger Felsenquelle	Wiesenburg/Mark
Wiesenquelle (für Glasabfüllung) Unser Norden (für PET-Füllung)	Wiesenquelle	Güstrow
Wiesentaler Mineralquelle	Wiesentaler Mineralquelle	Waghäusel-Wiesental
Wildbadquelle	Brunnen III	Schwäbisch Hall
Wildbadquelle	Wildbadquelle	Schwäbisch Hall Heimbach
Wilhelms-Quelle	Wilhelms-Quelle	Kronberg-Kronthal

Trade description	Name of source	Place of exploitation
Wilhelmsthaler Mineralbrunnen	Wilhelmsthaler Mineralbrunnen	Calden-Westuffeln
Wimbachquelle	Wimbachquelle	Ramsau bei Berchtesgaden
Wimbachtaler	Wimbachtaler	Ramsau bei Berchtesgaden
Winella Quellwasser	Ebrachtal Quelle	Mühlhausen
Winfried	Sebastianquelle	Bad Peterstal
Winfried	Wolftalquelle	Bad Rippoldsau
Wittenseer Quelle	Wittenseer Quelle	Groß Wittensee
Wittmannsthal-Quelle	Wittmannsthal-Quelle	Bad Dürrheim
Wörsinger Mineralquelle	Wörsinger Mineralquelle	Bietigheim-Bissingen
Wörsinger Urquelle	Aqua vita Quelle	Tamm
Wüteria Heiligenquelle	Wüteria Heiligenquelle	Gemmingen
Wüteria Schloßbrunnen	Wüteria Schloßbrunnen	Gemmingen
Xaveri-Brunnen	Xaveri-Brunnen	Eichendorf-Addorf
Zack	Bad Vilbeler Hermannsquelle	Bad Vilbel
Zahnaer Mineralbrunnen	Zahnaer Mineralbrunnen	Zahna
Zott Aqua	Zott Aqua	Mertingen
(¹)	Punica-Quelle	Hamburg

(¹) This mineral water is exclusively used as ingredient for beverages production; therefore it has no sales description.

List of natural mineral waters from third countries recognised by Germany

Trade description	Name of source	Place of exploitation
Akmina	Akmina	Bolu / Türkei
Alpenrose	Adelbodner Quelle	Adelboden (Bern) / Schweiz
Alvares	Gorgor Quelle	Im nordwestlichen Iran, in der Nähe der Stadt Ardabil, an der Flanke des Berges Sabalan / Iran
Antipodes	Antipodes spring bore 937	Whakatane, Otakiri / Neuseeland
Aproz	Aproz	Sion-Nendaz (Wallis) / Schweiz
Aqua Bella	B2	Kula / Serbien
Aqui	Aqui-Brunnen	Zürich (Zürich) / Schweiz
Arkina	Arkina	Yverdon-les-Bains (Waadt) / Schweiz
BB	BB	Auf dem Gelände der Fa. Aqua Heba in Bujanovac / Serbien
Blue Kristall	Wolschski Utes 2	Sysran (Wolga) / Russland

Trade description	Name of source	Place of exploitation
BO	Banja Spring - BO	Kresevo / Bosnien
Cristallo	Lostorf A	Lostorf (Solothurn) / Schweiz
Duboka	KB-2	Nerecinca bei Kucevo / Serbien
Elbrus Caucasian Mineral Water	Elbrus	Naltschik, Karbadin- und Balkarian Republik / Russland
Eptinger	Eptinger	Sissach / Schweiz
Gize	Spa Springs	Spa Springs, Middleton / Kanada
Grafenquelle	Studenac-Grofova vrela (Graf-Quelle)	Lipik / Kroatien
Grasevacka Reka-Brus	Grasevacka Reka-Brus	In der Gemarkung der Gemeinde Brus / Serbien
HEBA	HEBA	Betriebsgelände der Mineralbrunnenfabrik Heba in Bujanovac / Serbien
Heidiquelle	Heidiquelle	Mels (St. Gallen) / Schweiz
Henniez	Henniez	Henniez (Waadt) / Schweiz
Himalayan, natürliches Mineralwasser (Natural Mineral Water)	Bohrung 1 (Drilling 1)	Dhaura Kuan, Distrikt Sirmour, Bundesstaat Himachal Pradesh / Indien
Himalayan, natürliches Mineralwasser (Natural Mineral Water)	Bohrung 2 (Drilling 2)	Dhaura Kuan, Distrikt Sirmour, Bundesstaat Himachal Pradesh / Indien
Jana	Sveta Jana	Südwestlich von Zagreb, im Gebiet von Toplice / Kroatien
Mivela-Mg	Mivela - 1	Veluce bei Trstenik / Serbien
Nendaz	Avalanche	Aproz (Wallis) / Schweiz
Novoterskaya Tselebnaya	Smeikinsker Mineralwasservorkommen	Mineralnije Wodi, Stravropol / Russland
Olimpija	Olimpija	In der Gemarkung Mostarsko Raskrce / Bosnien-Herzegowina
Otakiri Springs	Otakiri Springs	Manukau / Neuseeland
Pinar Madran	Pinar Madran	Südöstlich der Stadt Aydin bei Bozdogan / Türkei
Resan	Sonda Nr. 1	Kishinev / Moldawien
Royal-Classic	Ankawan Quelle Nr. 5	Ankawan / Armenien
Royal-Tezh Sar	Ankawan Quelle Nr. 39	Ankawan / Armenien
Saka	SAKA	Camlica, bei Hendek (Sakarya) / Türkei
San Clemente	San Clemente	Caslaccio-Sigirino (Tessin) / Schweiz
Termen	Pearlwater Mineralquellen AG	Termen (Wallis) / Schweiz
TILEA	TILEA	Gromiljak bei Kiseljak / Bosnien
Valais	Quelle Montis	Les Portions d'Aven in Vertroz / Schweiz

Trade description	Name of source	Place of exploitation
Valsler St. Petersquelle	St. Petersquelle	Vals (Graubünden) / Schweiz
Valsler Still	St. Paulsquelle	Vals / Schweiz
Valsler Still	Hüschi Quelle	Vals / Schweiz
VATA	Gorgor Quelle	Im nordwestlichen Iran, in der Nähe der Stadt Ardabil, an der Flanke des Berges Sabalan / Iran
Voda Voda	B-2	Gornja Toplica, Kreis Mionica / Serbien
Zurzacher Mineralwasser	Bohrung Zurzach 2	Zurzach / Schweiz

List of natural mineral waters recognised by Estonia

Trade description	Name of source	Place of exploitation
VÄRSKA ORIGINAAL	Puurkaev nr.7	Värska
VÄRSKA	Puurkaev nr 5	Värska vald, Väike- Rõsna küla
HÄÄDEMEESTE GOODMENS	Puurkaevu katastri number 8021	Pärnumaa Häädemeeste vald; Häädemeeste alevik Asuja 9 Mineraalvee maaüksus
B'EST	Puurkaev B'EST	Tartumaa, Tähtvere vald, Haage küla, Veemeistri tee 7

List of natural mineral waters recognised by Ireland

Trade Description	Name of source	Place of exploitation
Ballygowan	Ballygowan Spring	Castle Demesne, Newcastle West, County Limerick
Glenpatrick	Glenpatrick Spring	Cashel Road, Clonmel, County Tipperary
Kerry Spring	Kerry Spring	Ballyferriter, County Kerry
Tipperary	Tipperary Spring	Pallas Street, Borrisoleigh, County Tipperary

List of natural mineral waters recognised by Greece

Trade Description	Name of source	Place of exploitation
Alpha	Source Alpha	Arnissas, DE Vegoritidas Dimou Edessas N. Pellas
Anthemis (formely Ira)	Ira	Kinotita Stavrinidon, N. Samou
Apollonio	Apollonio	Agia Varvara Rodos, N. Dodekanisou
Avra	Geotrisi Avra4	Dimos Aigiou N. Ahaias
Corfu	Corfu	Kinotita Chloromation, N. Kerkiras
DIOS	Source Dios	DD Karitsas Dimou Diou n. Pierias
Doumbia	Doumbia	Kinotita Doumbion, N. Chalkidikis
Evdoro	Evdoro	Dimotiko Diamertisma Meliaton Ipatis N. Fthiotidas
Florina	Afoi Efremidi ABEE	Bl. PE. Florinas

Trade Description	Name of source	Place of exploitation
Goura	Goura	Karditsa N. Karditsas
Ias	Source Ias	Ditiko Diamerisma Kallianon Stimphalias N. Korinthias
Ioli	— Ioli — Ioli source	Kinotita Moshohoriou, N. Fthiotidas
Kalliroi	Silli	Kinotita Sillis, N. Dramas
Karies	Karies	Kinotita Leontiou (Veteika), N. Ahaias
Kimi	Source Kimi	Evia, N. Evias
Klinos	Palavi	Kinotita Klinou, N. Trikalon
Korpi	— Geotrisi Korpi (former Papagianni) — Source Korpi	Kinotita Monastirakiou Vonitsas, N. Etoloakarnanias
Krini	Krini	Kinotita «Polla Nera», N. Imathias
Krinos	Krinos	Rododafni Egiou N. Ahaias
Lefka Ori	Dihalorimata	DD Stilou Dimos Apokoronou N. Chanion
Lezina	Lezina	Vourkoti Apikion Androu N. Kykladon
Loutraki	Loutraki	Loutraki, N. Korinthias
Mega Perry	Kastri Mega Peristeri	Metsovo N. Ioanninon
Merkada	L. Thanella	Merkada, N. Fthiotidas
Meteora	Stagon	Kalabaka, N. Trikalon
Nigrita	Therma Nigritas	Therma Nigritas, N. Serron
Niki	Niki	Kinotita Ano Karyotes Samotharkis, N. Evrou
Olympos	Source Olympos	Leprokarya Dimos A. Olympou, N. Pierias
Piges Kostilatas stin Hpeiro	Pigi Mourtzia II Vrizekalamou Kostilatas	Siamantas, Kinotita Theodorianon, N. Artas
Pigi Olympou	— Pigi Olympou B' — Source A1	Vouliki Katerinis, N. Pierias
Samarina	Goura Samarinas	Samarina, N. Grevenon
Seli	Assos	Spilia, N. Kozanis
Souroti	— Souroti — Souroti Source C ₁	Kinotita Sourotis, N. Thessalonikis
Stamna	Stamna (former Hamoprina)	Mallia, N. Irakleiou Kritis
Thetis	Honaïou	Kinotita Vasilikon (Galarinou) N. Xalkidikis
Veniza	Vakontios	Kinotita Villion, N. Attikis
Vikos	Vikos	Kinotita Perivleptou, N. Ioanninon

Trade Description	Name of source	Place of exploitation
Xino Nero	Source Pouro	Dimos Amynteou, N. Florinas
Zagori	Karakori Perivleptou	Kinotita Perivleptou, N.Ioanninon
Zagori	Galderimi Kranoulas	Koinotita Kranoulas, N.Ioanninon
Zagorohoria	Zagorohoria	Mesovouni Negrades N. Ioanninon
Zaros	Amati	Dimos Zarou N. Irakleiou

List of natural mineral waters from third countries recognised by Greece

Trade Description	Name of source	Place of exploitation
Glina	Glina	Girokaster -Albania
Tepelene	Kryoneri- Tepeleni	Tepeleni Albania
Oro	Oro	Bogova, Skrapar Albania

List of natural mineral waters recognised by Spain

Trade Description	Name of source	Place of exploitation
Agua de Albarcin	Albarcin	Guadix (Granada)
Agua de Azuebar	Fuente del Sas	Azuebar (Castellón)
Agua de Bejís	Los Cloticos	Bejís (Castellón)
Agua de Beteta	Fuente del Arca	Beteta (Cuenca)
Agua de Bronchales	Bronchales 3	Bronchales (Teruel)
Agua de Cuevas	Fuente de Cuevas	Aller (Asturias)
Agua de Chovar	Fuente Barranco Carbón	Chovar (Castellón)
Agua de Quess	Manantial de Quess	Quess-Piloña (Asturias)
Agua de Sousas	Sousas II	Verín (Ourense)
Agua de Teror	Fuente Agria de Teror	Teror (Las Palmas)
Agua del Rosal	Agua del Rosal	Calera y Chozas (Toledo)
Aguadoy	Aguadoy	Calera y Chozas (Toledo)
Aiguaneu	Aiguaneu	Espilnelves (Girona)
Agua de la Palma	Barbuzano	Santa Cruz de la Palma (Santa Cruz de Tenerife)
Agua de Manzanera	El Salvador	Manzanera (Teruel)
Agua de Mijas	La Ermitica	Mijas (Málaga)
Agua de Ribagorza	Ribagorza	Graus (Huesca)
Agua do Paraño	Paraño 87.1	Boborás (Ourense)
Agua Valparaíso	La Fontiña	Requejo (Zamora)
Aguasana	A Granxa/ La Granja	Belesar – Baiona (Pontevedra)
Aguavida	Fuente Mina	Casarabonela (Málaga)
Almedijar	Fuente El Canyar	Almedijar (Castellón)

Trade Description	Name of source	Place of exploitation
Alzola	Alzola	Alzola-Elgoibar (Guipúzcoa)
Aqua Nevada	Aqua Nevada	El Tesorillo, Albuñán (Granada)
Aquabona Fontoira	Fontoira	Cospeito (Lugo)
Aquabona Fuen-Mayor	Fuen-Mayor	Cañizar del Olivar (Teruel)
Aquabona Peña Umbría	Peña Umbría	Requena (Valencia)
Aquabona Santolín	Santolín	Quintanaurria (Burgos)
Aquadeus	Fuente Arquillo	El Robledo (Albacete)
Aquadomus	Aquadomus	Saldaña (Palencia)
Aquarel	Las Jaras	Herrera del Duque (Badajoz)
Babilafuente	Antigua Fuente del Caño	Babilafuente (Salamanca)
Bastida	Bastida	Alaró (Baleares)
Belnature	Belnature	Arteta (Navarra)
Betelu	Ama-Iturri	Betelu (Navarra)
Bezoya	Bezoya	Ortigosa del Monte (Segovia)
Bezoya Trescasas	Bezoya Trescasas	Trescasas (Segovia)
Binifaldó	Font Des Pedregaret y Binifaldó	Escorca (Baleares)
Borines	Manantial La Victoria	Borines-Piloña (Asturias)
Cabreiroá	Cabreiroá	Verín (Ourense)
Cabreiroá	Cabreiroá 2	Verín (Ourense)
Cabreiroá	Cabreiroá 3	Verín (Ourense)
Calabor	Calabor	Pedralba de la Pradería (Zamora)
Caldes de Bohi	Font del Bou	Barruera (Lleida)
Cantalar	Cantalar	Moratalla (Murcia)
Carrizal II	Carrizal II	Cuadros (León)
Corconte	Balneario de Corconte	Soncillo (Burgos)
Cortes	Penyagolosa	Cortes de Arenoso (Castellón)
Don Pepe	El Montalvo	Aldeatejada (Salamanca)
El Cañar	El Cañar	Jaraba (Zaragoza)
El Carrizal	Carrizal	San Andrés del Rabanedo (León)
El Portell, MP	El Portell	Monserrat (Valencia)
Eliqua	Font d'Elca	Salem (Valencia)
Estrella V	Estrella V	Arbúcies (Girona)

Trade Description	Name of source	Place of exploitation
Fondetal	Fondetal	Talarrubias (Badajoz)
Fonsana	Fonsana	La Cabrera (Madrid)
Font Agudes del Montseny	Font Agudes del Montseny	Arbúcies (Girona)
Font de L'Om	Font de L'Om	Oliva (Valencia)
Font de Sa Senyora	Fuente Sa Senyora	Deyá (Balears)
Font del Regàs	Font del Regàs	Arbúcies (Girona)
Font del Subirà	El Subirà	Osor (Girona)
Font Major	Font Major	Escorca (Balears)
Font Natura	Font Natura	Loja (Granada)
Font Nova del Pla	Font Nova del Pla	Aiguamúrcia (Tarragona)
Font Picant	Font Picant	Amer (Girona)
Font Sol	Aguas de Sierra	La Font de la Figuera (Valencia)
Font Vella	Font Sacalm	Sant Hilari Sacalm (Girona)
Font Sorda Son Cocó	Font Sorda-Son Cocó	Alaró (Balears)
Font Vella Sigüenza	Sigüenza	Sigüenza (Guadalajara)
Fontarel	El Pilar	Loja (Granada)
Fontdalt	Fontdalt	Tivissa (Tarragona)
Font des Teix	Font des Teix	Bunyola (Balears)
Fontdor	Fontdor	Sant Hilari Sacalm (Girona)
Fontecabras	Fontecabras	Jaraba (Zaragoza)
Fontecelta	Fontecelta	Sarriá (Lugo)
Fontedoso	Fontedoso	El Oso (Ávila)
Fonteide	Fonteide	La Orotava (Santa Cruz de Tenerife)
Fontemilla	Fontemilla	Sigüenza (Guadalajara)
Fontenova	Fontenova	Verín (Ourense)
Fonter	Fonter	Amer (Girona)
Font S'Aritja	Font S'Aritja	Bunyola (Balears)
Fonxesta	Fonxesta	Vega de Anzuélos-Láncara (Lugo)
Fuencisla	Fuencisla	Requena (Valencia)
Fuensanta	Fuensanta de Buyerés	Nava (Asturias)
Fuentebruma	Fuentebruma	Gáldar (Las Palmas)
Fuentequilla	Fuente del Fraile	Tarazona de la Mancha (Albacete)
Fuente del Val	Fuente del Val 2	Mondariz (Pontevedra)

Trade Description	Name of source	Place of exploitation
Fuente dueñas	Fuente de la Higuerica	Mula (Murcia)
Fuente en Segures	Fuente en Segures	Benasal (Castellón)
Fuente Estrella	Fuente Estrella	Arbúcies (Girona)
Fuentelajara	Fuentelajara	Belvis de la Jara (Toledo)
Fuente Liviana	La Hoz	Huerta del Marquesado (Cuenca)
Fuente Liviana	Serranía I	Huerta del Marquesado (Cuenca)
Fuente Madre	Fuente Madre	Los Navalmorales (Toledo)
Fuente Pinar	Guadalvida	Villanueva del Arzobispo (Jaén)
Fuente Primavera	Fuente Primavera	Requena (Valencia)
Fuenteror	Fuenteror	Teror (Las Palmas)
Fuentes de Lebanza	La Cueva	San Salvador de Cantamuda (Palencia)
Fuentesolana	Fuente Solana	Hornachos (Badajoz)
Fuentevera	Fuentevera	Calera y Chozas (Toledo)
Galea	Galea	Meres-Siero (Asturias)
Imperial	Imperial	Caldes de Malavella (Girona)
Insalus	Insalus	Lizartza (Guipúzcoa)
La Ideal I	La Ideal I	Firgas (Las Palmas)
La Ideal II	La Ideal II (El Rapador)	Firgas (Las Palmas)
La Paz	La Paz	Marmolejo (Jaén)
La Serreta	La Serreta	La Font de la Figuera (Valencia)
Lanjarón Fonte Forte	Fonte Forte	Lanjarón (Granada)
Lanjarón Salud	Salud	Lanjarón (Granada)
L'Avellà	Nuestra Señora de Avellà	Catí (Castellón)
Les Creus	Les Creus	Maçanet de Cabrenys (Girona)
Liviana	Eliqua	Salem (Valencia)
Los Riscos	Los Riscos de la Higüela	Alburquerque (Badajoz)
Lunares	Lunares	Jaraba (Zaragoza)
Malavella	Malavella	Caldes de Malavella (Girona)
Marmolejo	Marmolejo	Marmolejo (Jaén)
Manantial San Millán	San Millán	Torrecilla en Cameros (La Rioja)
Mondariz	Mondariz IV	Mondariz-Balneario (Pontevedra)
Monssalus	Monssalus	Albuñan (Granada)
Montepinos	Montepinos	Almazán (Soria)

Trade Description	Name of source	Place of exploitation
Natura	Natura	Los Villares (Jaén)
Neval	Neval	Moratalla (Murcia)
Numen Premium Water	Numen	Villarrubia de los Ojos (Ciudad Real)
Orotana	Orotana	Artana (Castellón)
Panticosa	San Agustín	Balneario de Panticosa (Huesca)
Peñaclara	Peñaclara	Torrecilla en Cameros (La Rioja)
Pineo	Pineo	Estamariu (Lleida)
Ribes	Fontaga	Ribes de Freser (Girona)
Rocallaura	Agua de Rocallaura	Vallbona de les Monges (Lleida)
San Andrés	San Andrés	San Andrés del Rabanedo (León)
San Andrés II	San Andrés II	Cuadros (León)
San Antón II	San Antón II	Firgas (Las Palmas)
San Joaquín	San Joaquín de Huemos de Cañedo	Valdunciel (Salamanca)
San Narciso	San Narciso	Caldes de Malavella (Girona)
San Vicente	San Vicente	Lanjarón (Granada)
Sant Aniol	Sant Aniol	Sant Aniol de Finestres (Girona)
Sant Hilari	Sant Hilari	Arbúcies (Girona)
Sanxinés	Sanxinés	Bamio-Villagarcía de Arosa (Pontevedra)
Sierra Bonela	Casarabonela	Casarabonela (Málaga)
Sierra de Cazorla	Sierra Cazorla	Villanueva del Arzobispo (Jaén)
Sierra de Segura	Fuente Blanca	Villanueva del Arzobispo (Jaén)
Sierra del Águila	La Majuela	Cariñena (Zaragoza)
Sierra del Búho	Sierra del Búho	Moratalla (Murcia)
Sierra Dúrcal	Sierra Dúrcal	Dúrcal (Granada)
Sierra Fría	El Chumacero	Valencia de Alcántara (Cáceres)
Sierras de Jaén	Sierras de Jaén	Los Villares (Jaén)
Siete Valles Camporrobles	Camporrobles	Camporrobles (Valencia)
Siete Valles Los Barrancos	Los Barrancos	La Ribera de Folgoso (León)
Solán de Cabras	Fuente de Solán de Cabras	Beteta (Cuenca)
Solares	Fuencaliente de Solares	Solares (Cantabria)
Teleno	Teleno	Palacios de la Valduerna (León)
Valtorre	Valtorre	Belvis de la Jara (Toledo)

Trade Description	Name of source	Place of exploitation
Veri	Veri 1	Bisaurri (Huesca)
Veri	Veri 5	El Run-Castejón de Sos (Huesca)
Veri	Veri 2	Bisaurri (Huesca)
Vichy Catalán	Vichy Catalán	Caldes de Malavella (Girona)
Viladrau	Fontalegre	Viladrau (Girona)
Vilajuïga	Vilajuïga	Vilajuïga (Girona)
Vilas del Turbón	Vilas	Torre la Ribera (Huesca)
Villamaria	Villamaria	Navamorcuende (Toledo)
Virgen del Camino	Virgen del Camino	Valverde de la Virgen (Leon)

List of natural mineral waters from third countries recognised by Spain

Trade description	Name of source	Place of exploitation
Gota	Paraná	Gualeguaychú-Entre Ríos (Argentina)
Suissa	Fonte Minerale San Bernardino	San Bernardino (Switzerland)
Virgen de las Ánimas	Cerro Arequita	Lavalleja (Uruguay)

List of natural mineral waters recognised by France

Trade description	Name of source	Place of exploitation
Abatilles	Saint-Anne	Arcachon (Gironde)
Abatilles gazéifiée	Sainte-Anne	Arcachon (Gironde)
Aix-les-Bains	Raphy-St-Simon Est	Grésy-sur-Aix (Savoie)
Aizac	Grande Source du Volcan	Aizac (Ardèche)
Alizée	Alizée	Chambon-la-Forêt (Loiret)
Alizée gazéifiée	Alizée	Chambon-la-Forêt (Loiret)
Amanda	Amanda	Saint-Amand-les-Eaux (Nord)
Arcens	Perline	Arcens (Ardèche)
Arvie	Arvie	Augnat (Puy-de-Dôme)
Badoit	Badoit	Saint-Galmier (Loire)
Biovive	Biovive	Dax (Landes)
Celtic	La Liese	Niederbronn-les-Bains (Bas-Rhin)
César	César	Saint-Alban-les-Eaux (Loire)
Chambon	Montfras	Chambon-la-Forêt (Loiret)
Chambon gazéifiée	Montfras	Chambon-la-Forêt (Loiret)
Chantemerle	Chantemerle	Meyras (Ardèche)
Châteauneuf-Auvergne	Castel Rocher	Châteauneuf-les-Bains (Puy-de-Dôme)

Trade description	Name of source	Place of exploitation
Châteldon	Sergentale	Châteldon (Puy-de-Dôme)
Cilaos	Véronique	Cilaos (Réunion)
Contrex	Source contrex	Contrexéville (Vosges)
Didier	Fontaine Didier	Fort-de-France (Martinique)
Eau minérale naturelle de la source Léa	Léa	Mérignies (Nord)
Eau minérale naturelle – Saint-François	Saint-François	Thonon les Bains(Haute-Savoie)
Eau minérale naturelle de la source Saint-Léger	Saint-Léger	Pérenchies (Nord)
Eau minérale naturelle source Adeline	Adeline	Ardenay sur Merize (Sarthe)
Eau minérale naturelle Source Montclar	Montclar	Montclar (Alpes de Haute-Provence)
Eau minérale naturelle Fontaine de la reine Frédégonde	Forage F2	Castelnau-de-Brassac (Tarn)
Eau minérale naturelle gazeuse de la reine Frédégonde	Forage F3	Castelnau-de-Brassac (Tarn)
Evian	Cachat	Evian (Haute-Savoie)
Faustine	Faustine	Saint-Alban-les-Eaux (Loire)
Hépar	Source Hépar	Vittel (Vosges)
Hydroxy dase	Marie-Christine-Nord	Le Breuil-sur-Couze (Puy-de-Dôme)
Jouvence de Wattwiller	Jouvence	Wattwiller (Haut-Rhin)
Julia	Julia	Saint-Alban-les-Eaux (Loire)
La Cairolle	La Cairolle	Les Aires (Hérault)
La Française	La Française	Propiac (Drôme)
La Salvetat	Rieumajou	La Salvetat-sur-Agout (Hérault)
Vernière	Vernière	Les Aires (Hérault)
Le Vernet	Vernet Ouest	Prades (Ardèche)
L'Incomparable	La Ferrugineuse Incomparable	Asperjoc (Ardèche)
Luchon	Lapade	Bagnères de Luchon (Haute-Garonne)
Montcalm	Montcalm	Auzat (Ariège)
Mont-Roucous	Mont-Roucous	Lacaune (Tarn)
Nessel	Nessel	Soultzmatt (Haut-Rhin)
Ogeu – source gazeuse n°1	Gazeuse n°1	Ogeu-les-Bains (Pyrénées-Atlantiques)
Ogeu - source du Roy	Roy	Ogeu les Bains (Pyrénées-Atlantiques)
Orée du Bois	Orée du Bois	Saint-Amand-les-Eaux (Nord)
Orezza	Sorgente Sottana	Rappagio Orezza (Haute-Corse)

Trade description	Name of source	Place of exploitation
Parot	Parot	Saint-Romain-le-Puy (Loire)
Perrier	Perrier	Vergèze (Gard)
Perrier Fines Bulles	Perrier	Vergèze (Gard)
Plancoët	Sassoy	Plancoët (Côte-d' Armor)
Plancoët fines bulles	Sassoy	Plancoët (Côtes-d'Armor)
Prince Noir	Prince Noir	Saint-Antonin-Noble-Val (Tarn-et-Garonne)
Puits-St-Georges	Puits-St-Georges	Saint-Romain-le-Puy (Loire)
Quézac	Diva	Quézac (Lozère)
Reine des Basaltes	La Reine des Basaltes	Asperjoc (Ardèche)
Rozana	Des Romains	Beauregard Vendon (Puy-de-Dôme)
Sail Les Bains	du Hamel	Sail-les-Bains (Loire)
Saint-Alban	Antonin	Saint-Alban-les-Eaux (Loire)
Saint-Amand	Clos de l'Abbaye	Saint-Amand-les-Eaux (Nord)
Saint-Antonin	Source de l'Ange	Saint-Antonin-Noble-Val (Tarn-et-Garonne)
Saint Diéry	Renlaigue	Saint-Diéry (Puy-de-Dôme)
Sainte-Marguerite	La Chapelle	Saint-Maurice-ès-Allier (Puy-de-Dôme)
Saint Géron	Gallo romaine	Saint Géron (Haute-Loire)
Saint-Martin d'Abbat	Native	Saint-Martin d'Abbat (Loiret)
Saint Michel de Mourcairol	Saint Michel de Mourcairol	Les Aires (Hérault)
Saint-Yorre - Bassin de Vichy	Royale	Saint-Yorre (Allier)
Thonon	La Versoie	Thonon les Bains (Haute-Savoie)
Treignac	Maurange 2	Treignac (Corrèze)
Vals-Manon	Manon	Vals-les-Bains (Ardèche)
Vals-Saint-Jean	Saint-Jean	Vals-les-Bains (Ardèche)
Vals-Saint Pierre	Saint Pierre	Vals-les-Bains (Ardèche)
Vals-Vivaraise	Vivaraise	Vals-les-Bains (Ardèche)
Vauban	Vauban 97	Saint-Amand-les-Eaux (Nord)
Ventadour	Ventadour	Meyras (Ardèche)
Vichy-Célestins	Célestins	Vichy (Allier)
Vittel	Bonne Source	Vittel (Vosges)
Vittel	Grande Source	Vittel (Vosges)
Volvic	Clairvic	Volvic (Puy-de-Dôme)

Trade description	Name of source	Place of exploitation
Wattwiller	Artésia	Wattwiller (Haut-Rhin)

List of natural mineral waters from third Countries recognised by France

Trade description	Name of source	Place of exploitation
Eden Dorénaz	Goa	Dorénaz- Valais (Suisse)

List of natural mineral waters recognised by Croatia

Trade description	Name of source	Place of exploitation
Jamnica	Janino vrelo	Pisarovina
Jana	Sveta Jana	Gorica Svetojanska
Kalnička	Kalnička	Apatovec
Lipički Studenac	Antunovo vrelo	Lipik
Studenac	Grófova vrela	Lipik

List of natural mineral waters from third countries recognised by Croatia

Trade description	Name of source	Place of exploitation
Sarajevski kiseljak	Vrelo Park	Kiseljak, Republika Bosna i Hercegovina
Mivela-Mg	Mivela-1	Veluce, Republika Srbija

List of natural mineral waters recognised by Italy

Trade description	Name of source	Place of exploitation
ACETOSELLA	FONTI ACIDULE PLINIO	CASTELLAMMARE DI STABIA (Napoli)
ACQUA BRIOSA	PALOMBARO	ACIREALE (Catania)
ACQUA DEGLI ANGELI	ACQUA DEGLI ANGELI	PIURO E VILLA DI CHIAVENNA (Sondrio)
ACQUA DELL'IMPERATORE	FONTI SAN CANDIDO	SAN CANDIDO (Bolzano)
ACQUA DELLA MADONNA	ACQUA DELLA MADONNA	CASTELLAMMARE DI STABIA (Napoli)
ACQUA DI FONTE	ACQUA DI FONTE	FONTE (Treviso)
ACQUA FRARI	SORGENTE RIO FRARI	PONTE NELLE ALPI (Belluno)
ACQUA MADONNA DELLE GRAZIE-SORGENTE ACQUARUOLO	ACQUARUOLO	CASTEL SAN VINCENZO (Isernia)
ACQUA PANNA	PANNA	SCARPERIA (Firenze)
ACQUA SACRA	ACQUA SACRA	ROMA
ACQUAROSSA	ACQUAROSSA	BELPASSO (Catania)

Trade description	Name of source	Place of exploitation
ALBA	ALBA	VALLI DEL PASUBIO (Vicenza)
ALBAVIVA	ALBAVIVA	VALLI DEL PASUBIO (Vicenza)
ALEXANDER	ALEXANDER	BOLOGNA
ALPIA	ALPIA	MALESCO (Verbania)
ALTAVALLE	ALTAVALLE	ROVEGNO (Genova)
ALTEA	ALTEA	SCHEGGIA E PASCELUPO (Perugia)
ALTURA	LIMPAS	TEMPIO PAUSANIA (Sassari)
AMATA	CASTELLO	ADELFA (Bari)
AMERINO SORGENTI DI SAN FRANCESCO	SORGENTI DI SAN FRANCESCO	ACQUASPARTA (Terni)
AMOROSA	AMOROSA	MASSA (Massa Carrara)
ANGELICA	ANGELICA	NOCERA UMBRA (Perugia)
ANTICA FONTE	ANTICA FONTE	DARFO (Brescia)
APPIA	APPIA	ROMA
ARMONIA	ARMONIA	BEDONIA (Parma)
AUREA	AUREA	BONORVA (Sassari)
AUSONIA	AUSONIA	BOGNANCO (Verbania)
AZZURRA	CAMONDA	TORREBELVICINO (Vicenza)
BEBER - SORGENTE DOPPIO	SORGENTE DOPPIO	POSINA (Vicenza)
BERNINA	BERNINA	PIURO (Sondrio)
BOARIO	BOARIO	DARFO (Brescia)
BRACCA ANTICA FONTE	BRACCA	BRACCA (Bergamo)
CALVAGNA	CALVAGNA	CAGLI (Pesaro)
CANAY	CANAY	MURIALDO (Savona)
CASTELLINA	CASTELLINA	CASTELPIZZUTO (Isernia)
CASTELLO	CASTELLO	VALLIO TERME (Brescia)
CAVAGRANDE	CAVAGRANDE	S. ALFIO (Catania)
CECILIANA	CECILIANA	PALESTRINA (Roma)
CERELIA	CERELIA	CERELIO DI VERGATO (Bologna)
CERTALTO	CERTALTO	MACERATA FELTRIA (Pesaro)
CHIARELLA	CHIARELLA	PLESIO (Como)

Trade description	Name of source	Place of exploitation
CIME BIANCHE	CIME BIANCHE	VINADIO (Cuneo)
CLAUDIA	CLAUDIA	ANGUILLARA SABAZIA (Roma)
COL DI SASSO	COL DI SASSO	SCARLINO (Grosseto)
CONTESSA	SAN DONATO 2	GUBBIO (Perugia)
CORALBA	CORALBA	SAN DAMIANO MACRA (Cuneo)
CORIOLO	CORIOLO	PAESANA (Cuneo)
COTTORELLA	COTTORELLA	RIETI
COURMAYEUR FONTE YOULA	FONTE YOULA	COURMAYEUR (Aosta)
CUTOLO RIONERO-FONTE BLEUS	POZZO BLEUS	RIONERO IN VULTURE (Potenza)
DAGGIO	DAGGIO	PRIMALUNA (Lecco)
DAMORE	LE GRAZIE	SERRAVALLE PISTOIESE (Pistoia)
DIAMANTE	DIAMANTE	CONDRONGIANOS (Sassari)
DIVINA	DIVINA	TEMPIO PAUSANIA (Olbia – Tempio)
DOLOMIA	VALCIMOLIANA	CIMOLAIS (Pordenone)
DOLOMITI	DOLOMITI	VALLI DEL PASUBIO (Vicenza)
DON CARLO	DON CARLO	CONTURSI TERME (Salerno)
DUCALE	SENATO	TARSOGNO DI TORNOLO (Parma)
EGERIA	EGERIA	ROMA
EVA	FONTANONE	PAESANA (Cuneo)
EVA ROCCE AZZURRE	ROCCE AZZURRE	PAESANA (Cuneo)
FABIA–ANTICHE SORGENTI UMBRE	FABIA	ACQUASPARTA (Terni)
FABRIZIA	PASSO ABATE - SERRICELLA	FABRIZIA (Vibo Valentia)
FARA SAN MARTINO	FARA SAN MARTINO	FARA SAN MARTINO (Chieti)
FAUSTA	FAUSTA	DARFO (Brescia)
FEDERICA DELLA FONTE S.GIACOMO	FEDERICA DELLA FONTE S.GIACOMO	VILLASOR (Cagliari)
FELICIA	FELICIA	RIONERO IN VULTURE (Potenza)
FERRARELLE	FERRARELLE	RIARDO (Caserta)
FILETTE	FILETTE	GUARCINO (Frosinone)
FIUGGI	FIUGGI	FIUGGI (Frosinone)
FLAMINIA	FLAMINIA	NOCERA UMBRA (Perugia)

Trade description	Name of source	Place of exploitation
FLAVIA	FLAVIA	ZOGNO (Bergamo)
FONTALBA	FONTALBA	MONTALBANO ELICONA (Messina)
FONTE ABRAU	FONTE ABRAU	CHIUSA PESIO (Cuneo)
FONTE ALLEGRA	ALLEGRA	SALO' (Brescia)
FONTE ANNIA	FONTE ANNIA	POCENIA (Udine)
FONTE ARGENTIERA	FRIGURIN	SASSELLO (Savona)
FONTE AURA	FONTE AURA	ACQUASPARTA (Terni)
FONTE CAUDANA	FONTE CAUDANA	DONATO (Biella)
FONTE CIANELLA	FONTE CIANELLA	CAROVILLI (Isernia)
FONTE CORTE PARADISO	CORTE PARADISO	POCENIA (Udine)
FONTE DE' MEDICI	VESCINA	MONTE SAN SAVINO (Arezzo)
FONTE DEI PINI	FONTE DEI PINI	ROCCAFORTE MONDOVI' (Cuneo)
FONTE DEL LUPO	FONTE DEL LUPO	ALTARE (Savona)
FONTE DEL PRINCIPE	FONTE DEL PRINCIPE	MONGIANA (Vibo Valentia)
FONTE DELICATA	FONTE DELICATA	SCORZE' (Venezia)
FONTE DELLA MADONNINA DELLA CALABRIA	FONTE DELLA MADONNINA	GIRIFALCO (Catanzaro)
FONTE DELLE ALPI	SECCAREZZE	BAGNOLO PIEMONTE (Torino)
FONTE DELLE ROCCE	FONTE DELLE ROCCE	CAPRANICA (Viterbo)
FONTE DI PALME	FONTE DI PALME	FERMO (Ascoli Piceno)
FONTE ELISA	FONTE ELISA	GENGA (Ancona)
FONTE GABINIA	GABINIA	GAVIGNANO (Roma)
FONTE GEU	FONTE GEU	FORNI AVOLTRI (Udine)
FONTE GIUSY	FONTE SAN PIETRO	SAN LORENZO BELLIZZI (Cosenza)
FONTE GRAL	FONTANA FREDDA	GRAGLIA (Biella)
FONTE GUIZZA	FONTE GUIZZA	SCORZE' (Venezia)
FONTE ILARIA	FONTE ILARIA	LUCCA
FONTE ITALA	FONTE ITALA	ATELLA (Potenza)
FONTE LIETA	FONTE LIETA	BUSANA (Reggio Emilia)
FONTE LINDA	FONTE LINDA	SALO' (Brescia)
FONTE LONERA	LONERA	VALLI DEL PASUBIO (Vicenza)

Trade description	Name of source	Place of exploitation
FRONTE MADDALENA	FRONTE MADDALENA	ARDEA (Roma)
FRONTE MARGHERITA	MARGHERITA	TORREBELVICINO (Vicenza)
FRONTE MEO	MEO	GAVIGNANO (Roma)
FRONTE NAPOLEONE	FRONTE NAPOLEONE	MARCIANA (Livorno)
FRONTE NUOVA SAN CARLO SPINONE	FRONTE NUOVA	SPINONE AL LAGO (Bergamo)
FRONTE OFELIA	FRONTE OFELIA	CONTURSI TERME (Salerno)
FRONTE POCENIA	FRONTE POCENIA	POCENIA (Udine)
FRONTE PRIMAVERA	FRONTE PRIMAVERA	POPOLI (Pescara)
FRONTE VENTASSO	FRONTE VENTASSO	BUSANA (Reggio Emilia)
FRONTEALTA	ROMANI 1	RONCEGNO (Trento)
FRONTECHIARA	FRONTECHIARA	MEDESANO (Parma)
FRONTELAURA	FRONTELAURA	PLESIO (Como)
FRONTENOCE	NOCE	PARENTI (Cosenza)
FRONTESANA	FRONTESANA	RIMINI
FRONTEVIVA	FRONTEVIVA	MASSA (Massa Carrara)
FRONTI BAUDA	BAUDA	CALIZZANO (Savona)
FRONTI DI CRODO-SORG. CESA	CESA	CRODO (Verbania)
FRONTI DI CRODO-VALLE D'ORO	VALLE D'ORO	CRODO (Verbania)
FRASASSI	FRASASSI	GENGA (Ancona)
FRISIA	FRISIA	PIURO (Sondrio)
FUCOLI	FUCOLI	CHIANCIANO (Siena)
FUTURELLA	FUTURELLA	SANT'ARSENIO (Salerno)
GAIA	GAIA	GENGA (Ancona)
GALLO	GALLO	MONTEFORTINO (Ascoli Piceno)
GALVANINA	GALVANINA	RIMINI
GARDAFRIZZ	GARDAFRIZZ	COSTERMANO (Verona)
GAUDENZIANA	GAUDENZIANA	BOGNANCO (Verbania)
GAUDIANELLO	GAUDIANELLO	RIONERO IN VULTURE (Potenza)
GAVERINA	GAVERINA 3	GAVERINA TERME (Bergamo)
GERACI	GERACI	GERACI SICULO (Palermo)

Trade description	Name of source	Place of exploitation
GERASIA	REALE	ALI' SUPERIORE (Messina)
GIARA	GIARA	VILLASOR (Cagliari)
GIARDINELLA	GIARDINELLA	FASANO (Brindisi)
GIOIOSA DELLA VALSESIA	GIOIOSA DELLA VALSESIA	QUARONA SESIA (Vercelli)
GIOVANE	GIOVANE	RIONERO IN VULTURE (Potenza)
GOCCIA DI CARNIA SORGENTE DI FLEONS	GOCCIA DI CARNIA SORGENTE DI FLEONS	FORNI AVOLTRI (Udine)
GRAZIA –SORGENTI DI ACQUASPARTA	FABIAVIVA	ACQUASPARTA (Terni)
GRIGNA	GRIGNA	PASTURO (Como)
GROTTO	GROTTO	TACENO (Lecco)
HIDRIA	PETRARO	BELPASSO (Catania)
IELO	IELO	PRATELLA (Caserta)
IGEA	IGEA	DARFO (Brescia)
IN BOSCO	IN BOSCO	SAN GIORGIO IN BOSCO (Padova)
LA FRANCESCA	LA FRANCESCA	RIONERO IN VULTURE (Potenza)
LAURETANA	CARUZZA	GRAGLIA (Biella)
LAVAREDO	FONTI SAN CANDIDO	SAN CANDIDO (Bolzano)
LEO	FONTE LEO	CARLOPOLI (Catanzaro)
LEONARDO	LEONARDO	PRIMALUNA (Lecco)
LETE	LETE	PRATELLA (Caserta)
LEVIA	LEVIA	SILQUA (Cagliari)
LEVICO CASARA	LEVICO CASARA	LEVICO TERME (Trento)
LEVISSIMA	LEVISSIMA	CEPINA VALDISOTTO (Sondrio)
LIMPIA	LIMPIA	S. PELLEGRINO TERME (Bergamo)
LIMPIDA	ARANCETO	FEROLETO ANTICO (Catanzaro)
LISIEL	LISIEL	CRODO (Verbania)
LUNA	LUNA	PRIMALUNA (Como)
LYNX	FONTI DI SAN FERMO	BEDONIA (Parma)
MANGIATORELLA	MANGIATORELLA	STILO (Reggio Calabria)
MANIVA	MANIVA	BAGOLINO (Brescia)
MARZIA	MARZIA	CHIANCIANO TERME (Siena)

Trade description	Name of source	Place of exploitation
MAXIM'S	MAXIM'S	STIA (Arezzo)
MILICIA	FONTE PASTUCHERA	ALTAVILLA MILICIA (Palermo)
MINIERI	SANTO STEFANO LANTERRIA	TELESE (Benevento)
MISIA	MISIA	CERRETO DI SPOLETO (Perugia)
MOLISIA	MOLISIA	SANTELENA SANNITA (Isernia)
MONTE BIANCO - FONTE MONT BLANC	MONT BLANC	COURMAYEUR (Aosta)
MONTE CIMONE	MONTE CIMONE	FANANO (Modena)
MONTE ROSA	MONTE ROSA	GRAGLIA (Biella)
MONTECHIARO	MONTECHIARO	CONVERSANO (Bari)
MONTEFORTE	MONTEFORTE	MONTESE (Modena)
MONTEVERDE	POZZO P6	PRACCHIA (Pistoia)
MONTOSO	MARTINA	BAGNOLO PIEMONTE (Cuneo)
MONVISO	FUCINE	LUSERNA SAN GIOVANNI (Torino)
MOTETTE	MOTETTE	SHEGGIA (Perugia)
MUGNIVA	MUGNIVA	LUSERNA SAN GIOVANNI (Torino)
MUSA	REALE	TORNOLO (Parma)
NATIA	NATIA	RIARDO (Caserta)
NEPI	NEPI	VITERBO
NEREA	FONTE DEGLI UCCELLI	CASTEL SANT'ANGELO (Macerata)
NEVE	NEVE	CADORAGO (Como)
NINFA	NINFA	RIONERO IN VULTURE (Potenza)
NIVA	NIVA	BALME (Torino)
NUOVA ACQUACHIARA	CORTIANE	VALLI DEL PASUBIO (Vicenza)
NUOVA AUGUSTA	FORNACE	CASTELLETTO D'ORBA (Alessandria)
NUOVA FONTE	NUOVA FONTE	ZOGNO (Bergamo)
NUOVA SANTA VITTORIA	FONTANA FREDDA	MONTEGROSSO PIAN LATTE (Imperia)
ORIANNA	SORGENTI CARIGNANO	FANO (Pesaro)
OROBICA	OROBICA	VILLA D'ALME' (Bergamo)
ORSINELLA	ORSINELLA	POGGIORSINI (Bari)
OTTAVIA	LAGNETTA	CROGNALETO (Teramo)

Trade description	Name of source	Place of exploitation
OTTAVIO ROVERE	SAN BERNARDO	GARESSIO (Cuneo)
PALMENSE DEL PICENO	PALMENSE DEL PICENO	FERMO (Ascoli Piceno)
PARAVISO	PARAVISO	LANZO D'INTELVI (Como)
PASUBIO	PASUBIO	VALLI DEL PASUBIO (Vicenza)
PEJO FONTE ALPINA	PEJO FONTE ALPINA	PEJO (Trento)
PERLA	PERLA	MONTE SAN SAVINO (Arezzo)
PIAN DELLA MUSSA	FONTE SAUZE'	BALME (Torino)
PINETA SORGENTE SALES	SALES	CLUSONE (Bergamo)
PIODA	PIODA	MOIO DE' CALVI (Bergamo)
PLOSE	PLOSE	BRESSANONE (Bolzano)
PRADIS	PRADIS	CLAUZETTO (Pordenone)
PRATA	PRATA	PRATELLA (Caserta)
PREALPI	PREALPI	VILLA D'ALME' (Bergamo)
PREISTORICA	PREISTORICA	AMANDOLA (Ascoli Piceno)
PRESOLANA	PRESOLANA	CLUSONE (Bergamo)
PRIMALUNA	PRIMALUNA	PRIMALUNA (Lecco)
PRIMAVERA DELLE ALPI	PRIMAVERA	DONATO (Biella)
PRIMULA	PRIMULA	SPINONE AL LAGO (Bergamo)
PURA	PURA	SILQUA (Cagliari)
QUERCETTA	QUERCETTA	SILQUA (Cagliari)
RADIOSA	RADIOSA	CASTELDELICI (Rimini)
REALE DI TORNOLO	TORLETTO	TORNOLO (Parma)
RECOARO	RECOARO	RECOARO (Vicenza)
REGILLA	REGILLA	ROCCA PRIORA (Roma)
REGINA	REGINA	MONTECATINI TERME (Pistoia)
REGINA STARO	FONTE REGINA STARO	VALLI DEL PASUBIO (Vicenza)
ROANA	PANICO	USSITA (Macerata)
ROCCA BIANCA	ROCCA BIANCA	NOVARA DI SICILIA (Messina)
ROCCHETTA	ROCCHETTA	GUALDO TADINO (Perugia)
RUGIADA	RUGIADA	GUBBIO (Perugia)

Trade description	Name of source	Place of exploitation
RUSCELLA	RUSCELLA	MODICA (Ragusa)
S. ALBERICO	S. ALBERICO	VERGHERETO (Forlì)
S. APOLLONIA	S. APOLLONIA	PONTEDILEGNO (Brescia)
S. BERNARDO-SORGENTE ROCCIAVIVA	ROCCIAVIVA	GARESSIO (Cuneo)
S. PELLEGRINO	S. PELLEGRINO	SAN PELLEGRINO TERME (Bergamo)
SABRINELLA	POZZO ACI	ALTAVILLA MILICIA (Palermo)
SAN ANTONIO	SANT'ANTONIO	CADORAGO (Como)
SAN BENEDETTO	SAN BENEDETTO	SCORZE' (Venezia)
SAN CARLO FONTE AURELIA	FONTE AURELIA	MASSA (Massa Carrara)
SAN CASSIANO	SAN CASSIANO	FABRIANO (Ancona)
SAN FAUSTINO	SAN FAUSTINO	MASSA MARTANA (Perugia)
SAN FELICE	SAN FELICE	PISTOIA
SAN FRANCESCO DI CASLINO AL PIANO	SAN FRANCESCO	CADORAGO (Como)
SAN GIACOMO	SAN GIACOMO	SARNANO (Macerata)
SAN GIACOMO DI ROBURENT	SAN GIACOMO DI ROBURENT	ROBURENT (Cuneo)
SAN GIORGIO	MITZA MIGHELI	SILQUA (Cagliari)
SAN GIOVANNI – FONTE DEL POLLINO	MERCURE	VIGGIANELLO (Potenza)
SAN GIULIANO	SAN GIULIANO	RIMINI
SAN GIUSEPPE	SAN GIUSEPPE	APRILIA (Latina)
SAN GIOVANNI DI SEFRO	SAN GIOVANNI DI SEFRO	SEFRO (Macerata)
SAN LORENZO	SAN LORENZO	BOGNANCO (Verbania)
SAN LUCA	SAN LUCA	GUARCINO (Frosinone)
SAN LUIGI	SAN LUIGI	BARNI (Como)
SAN MARCO	SAN MARCO	MINTURNO (Latina)
SAN MARTINO	SAN MARTINO	CODRONGIANOS (Sassari)
SAN PIETRO	SAN PIETRO	MARINO (Roma)
SAN ROCCO	RIOFREDDO	CASTELLETTO D'ORBA (Alessandria)
SAN SILVESTRO	SAN SILVESTRO	ANGOLO TERME (Brescia)
SAN VIGILIO	SAN VIGILIO	MERANO (Bolzano)

Trade description	Name of source	Place of exploitation
SAN VINCENZO	SAN VINCENZO	APRILIA (Latina)
SAN VITO AL TAGLIAMENTO	SAN VITO AL TAGLIAMENTO	SAN VITO AL TAGLIAMENTO (Pordenone)
SAN VITO DI CANISTRO	SAN VITO	CANISTRO (L'Aquila)
SAN ZACCARIA TERME BRENNERO	SAN ZACCARIA	BRENNERO (Bolzano)
SANDALIA	S'ACQUA COTTA	VILLASOR (Cagliari)
SANGEMINI	SANGEMINI	SANGEMINI (Terni)
SANT'ANDREA	SANT'ANDREA	MEDESANO (Parma)
SANT'ANDREA FONTE LIDIA	SANT'ANDREA FONTE LIDIA	MEDESANO (Parma)
SANT'ANGELO	SANT'ANGELO	SILQUA (Cagliari)
SANT'ANNA DI VINADIO	SANT'ANNA DI VINADIO	VINADIO (Cuneo)
SANT'ANNA-SORGENTE REBRUANT	REBRUANT	VINADIO (Cuneo)
SANT'ANTONIO SPONGA	SANT'ANTONIO SPONGA	CANISTRO (L'Aquila)
SANTELENA	SANTELENA	CHIANCIANO TERME (Siena)
SANTA	SANTA	CHIANCIANO (Siena)
SANTA BARBARA DI LURISIA	SANTA BARBARA	ROCCAFORTE MONDOVI' (Cuneo)
SANTA CHIARA	SANTA CHIARA	SCHEGGIA (Perugia)
SANTA CLARA	SANTA CLARA	BORZONASCA (Genova)
SANTA CROCE	SANTA CROCE	CANISTRO (L'Aquila)
SANTA FIORA	SANTA FIORA	MONTE SAN SAVINO (Arezzo)
SANTA LUCIA	SANTA LUCIA	BONORVA (Sassari)
SANTA MARIA	SANTA MARIA	MODICA (Ragusa)
SANTA MARIA CAPANNELLE	SANTA MARIA CAPANNELLE	ROMA
SANTA MARIA DEGLI ANGELI	SANTA MARIA DEGLI ANGELI	ATELLA (Potenza)
SANTA ROSALIA	SANTA ROSALIA	S.STEFANO DI QUISQUINA (Agrigento)
SANTAGATA	SANTAGATA	ROCCHETTA E CROCE (Caserta)
SANTHE'	SANTHE'	MOMBAROCCIO (Pesaro)
SANTO STEFANO	SANTO STEFANO	MONTESANO MARCELLANA (Salerno)
SANTO STEFANO IN CAMPO	SANTO STEFANO IN CAMPO	APRILIA (Latina)

Trade description	Name of source	Place of exploitation
SASSOVIVO	SASSOVIVO	FOLIGNO (Perugia)
SATTAI	SATTAI	GUSPINI (Cagliari)
SEPINIA	SEPINIA	SEPINO (Campobasso)
SETTEFONTI	SETTEFONTI	ALCARA LI FUSI (Messina)
SIBILLA SCOGLIO DELLA VOLPE	SIBILLA SCOGLIO DELLA VOLPE	MONTEMONACO (Ascoli Piceno)
SIETE FUENTES	SIETE FUENTES	SANTU LUSSURGIU (Oristano)
SILVA	ORTICAIA	PISTOIA
SMERALDINA	SMERALDINA	TEMPIO PAUSANIA (Olbia - Tempio)
SOLARIA	SOLARIA	RIONERO IN VULTURE (Potenza)
SOLE	SOLE	NUVOLENTO (Brescia)
SORBELLO	FONTI SORBELLO	DECOLLATURA (Catanzaro)
SORGENTE DEI MONTI AZZURRI	SORGENTE DEI MONTI AZZURRI	ARQUATA DEL TRONTO (Ascoli Piceno)
SORGENTE DELL'AMORE	SORGENTE DELL'AMORE	GRIMALDI (Cosenza)
SORGENTE LISSA	LISSA	POSINA (Vicenza)
SORGENTE MICHELANGELO	SORGENTE VERGINE E MICHELANGELO	SPEZZANO DELLA SILA (Cosenza)
SORGENTE MOSCHETTA	MOSCHETTA	GIRIFALCO (Catanzaro)
SORGENTE ORO-ALPI COZIE	ORO	LUSERNA SAN GIOVANNI (Torino)
SORGENTE PALINA	PALINA	SCARPERIA (Firenze)
SORGENTE UMBRA CELESTE	AMICA	CERRETO DI SPOLETO (Perugia)
SOVRANA	SOVRANA	CASTELLETTO D'ORBA (Alessandria)
SPAREA	SPAREA	LUSERNA SAN GIOVANNI (Torino)
STELLA ALPINA	STELLA ALPINA	MOIO DE' CALVI (Bergamo)
SUIO	SUIO	CASTELFORTE (Latina)
SURGIVA	SURGIVA	CARISOLO (Trento)
SVEVA	SVEVA	RIONERO IN VULTURE (Potenza)
TAVINA	FONTE TAVINA	SALO' (Brescia)
TELESE	BUVETTE	TELESE (Benevento)
TESORINO	TESORINO	MONTOPOLI VALDARNO (Pisa)
TETTUCCIO	TETTUCCIO	MONTECATINI TERME (Pistoia)

Trade description	Name of source	Place of exploitation
TINNEA	TINNEA	MONTEFORTINO (Ascoli Piceno)
TIONE	TIONE	ORVIETO (Terni)
TOKA	TOKA	RIONERO IN VULTURE (Potenza)
TOLENTINO SANTA LUCIA	TOLENTINO SANTA LUCIA	TOLENTINO (Macerata)
TORSA	TORSA	POCENIA (Udine)
TRE SANTI	TRE SANTI	SARNANO (Macerata)
TULLIA	TULLIA	SELLANO (Perugia)
ULIVETO	ULIVETO	VICOPISSANO (Pisa)
ULMETA	ULMETA	ORMEA (Cuneo)
VAIA	MIGNANO	BAGOLINO (Brescia)
VAL DI METI	VAL DI METI	APECCHIO (Pesaro)
VAL FREDDA	VAL FREDDA	MEZZOCORONA (Trento)
VAL MADRE	VAL MADRE	FUSINE (Sondrio)
VALCOCCA	VALCOCCA	ROCCAFORTE MONDOVI' (Cuneo)
VALLE REALE	VALLE REALE	POPOLI (Pescara)
VALLECHIARA	VALLECHIARA	ALTARE (Savona)
VALMORA	ABURU	RORA' (Torino)
VALPESIO	FONTANA CARLE	CHIUSA PESIO (Cuneo)
VALPURA	VALPURA	CADORAGO (Como)
VALVERDE	VALVERDE	QUARONA (Vercelli)
VARANINA	VARANINA	MEDESANO (Parma)
VARDA	VARDA	STIGNANO (Reggio Calabria)
VELA	VELA	BEDONIA (Parma)
VERDIANA	VERDIANA	MEDESANO (Parma)
VERNA	VERNA	CHIUSI DELLA VERNA (Arezzo)
VIGEZZO	VIGEZZO	MALESCO (Verbania)
VISCILOLO	VISCILOLO	RIONERO IN VULTURE (Potenza)
VITAS	VITAS	DARFO BOARIO TERME (Brescia)
VITASANA	SANTA CHIARA	FEROLETO ANTICO (Catanzaro)

Trade description	Name of source	Place of exploitation
VIVA	MISIA BIS	CERRETO DI SPOLETO (Perugia)
VIVIA	VIVIA	NEPI (Viterbo)
VIVIEN	VIVIEN	RIONERO IN VULTURE (Potenza)

List of natural mineral waters recognised by Cyprus

Trade description	Name of source	Place of exploitation
Agros	Agros BH W52/77	Agros Cyprus
Agros	Agros BH W131/93	Agros Cyprus
Ayios Nicolaos	Ayios Nicolaos	Ayios Nicolaos

List of natural mineral waters recognised by Latvia

Trade description	Name of source	Place of exploitation
Dabīgais Stelpes minerālūdens	Stelpe, Nr.16786	Avots, Stelpe, Bauska
Mangaļi	Mangaļi, 2, DB 21379	Rīga
MANGAĻI Nr.3	Mangaļi – 3	Rīga
Sigulda	Sigulda, Nr.DB 6398	Sigulda
TURAJDA ZEGEVOLD	TURAJDA ZEGEVOLD, No, DG 6393	Sigulda
VENDEN	Cīruliši, DB 7642	Cīruliši, Cēsis

List of natural mineral waters from third Countries recognised by Latvia

Trade description	Name of source	Place of exploitation
Goretskaya	Nr.1/2001	Gorki, Republic of Belarus
ARKHIZ	Bolshezenchuk, nr.131-K	Arkhiz distr., Karachayevo- Cherkess Republic, Russia
Arzni	Nr.6/64	Village Arzni, Kotayak region, Armenia
Borjomi	Nr.25	Borjomi, Georgia
Borjomi	Nr.38	Borjomi, Georgia
Borjomi	Nr.41	Borjomi, Georgia
Darida	Darida, nr.2/97	Zhdanovichi vil., Minsk distr., Republic of Belarus
Frost	Frost, Nr.1/2001	Village Khomsk, Republic of Belarus
Minskaja-4	Minskaja-4, nr.7	Minsk, Republic of Belarus
Nabeghlavi	Nr.66a	Nabeghlavi, Georgia
Narzan	Narzan Kislovodsk, nr.107-D	Kislovodsk, Russia

Trade description	Name of source	Place of exploitation
Borjomi	Nr.125	Borjomi, Georgia
Rudnyanskaya	Rudnya	Logojskij district, Minsk region, Republic of Belarus

List of natural mineral waters recognised by Lithuania

Trade description	Name of source	Place of exploitation
Akvilė	Akvilė	Prienų 3, Birštonas
Birštonas	Danutė	Kunigaikštienės Elenos g., Birštonas
Birutė	Birutė	Kunigaikštienės Elenos g., Birštonas
Elite	Elite	Lapės, Kauno r.
Hermis	Hermis	Mizarų g. 52, Druskininkai
Neptūnas	Neptūnas	Palkabalio k., Varėnos raj.
Neptūnas Unique	Neptūnas 1	Palkabalio k., Varėnos raj.
Tichė	Tichė	Sedos g. 35, Telšiai
Rasa Light	Rasa Light	Baravykų g., miškų urėdijos kvartalas Nr.190, Druskininkai
Rasa Medium	Rasa Medium	Druskininkų miško kvartalas Nr. 187, Druskininkai
Rasa High	Rasa High	Druskininkų miško kvartalas Nr. 187, Druskininkai
Rytas	Rytas	Kabiškių k., Vilniaus r.
Vaiva	Vaiva	Miškininkų g. 6, Rokiškis
Vytautas	Vytautas-7	B. Sruogos g. 7, Birštonas
Vytautas ANNO 1924	Vytautas-8	B. Sruogos 7a
—	No 27089	Laisvės a. 11, Druskininkai

List of natural mineral waters from third Countries recognised by Lithuania

Trade description	Name of source	Place of exploitation
Darida	Darida	Ždanoviči, Minsko r., Baltarusijos Respublika
Sirab	Sirab	Nachičevanės Autonominė Respublika, Babeko rajonas, Sirabo kaimas, Kalbaaghil telkinys, Azerbaidžano Respublika

List of natural mineral waters recognised by Luxembourg

Trade description	Name of source	Place of exploitation
Aurélie	Mölleschbour	Beckerich
Beckerich	Ophélie	Beckerich

Trade description	Name of source	Place of exploitation
Rosport	Rosport	Rosport
Viva	Viva	Rosport

List of natural mineral waters recognised by Hungary

Trade description	Name of source	Place of exploitation
AdandAqua	Koppány	Ádánd
Alföld Aqua	Strand hidegvízút	Nagykőrös
Anisán	Bujdosó I. kút	Cegléd
Amadé	Amadé	Gönc
Amira	Ati kút	Zsurk
Anna	Anna kút	Szeged
Apáti	Strand I.	Jászapáti
Apenta	Apenta Optima	Nyárlőrinc
Attala	Aqua Attala	Attala
Aqua Blu	2. sz. kút	Somogyvár
Aqua Dolina	R-Water	Akasztó
Aquatica	Aquatica	Szentkirály
Aqua Salamon	Aqua Salamon kút	Alap
Aqua Optima	Kerekes forrás	Üllő
AquaSol	AquaSol	Kiskőrös
Aquatys	Atys	Polgárdi
Aqua King	Magdolna-völgyi kút	Piliscsaba
Aquaria	K-125	Albertirsa
Aquarius	Aquarius 2.	Albertirsa
Aqualife	B-355	Baja
Aquastella, Csillaghegyi	Déli kút	Budapest, Csillaghegy
Aqua Optima	Kerekes forrás	Üllő
Aqua Pelso	Balatonyöngye	Szóllóskislak
Aqua Rich	Mineralis 305	Lakitelek
Aqua Vitae	Aqua Vitae	Tabdi
Arabella	Arabella	Sárbogárd
Ave	Ave 4	Debrecen
Balaton Ásványvíz	Öreg-hegyi kút	Balatonőszöd
Balfi	Balf II.	Sopron (Balf)

Trade description	Name of source	Place of exploitation
Balfi	Balf III.	Sopron (Balf)
Balfi	Balf IV.	Sopron (Balf)
Balfi	Balf VII.	Sopron (Balf)
Báthori	K-287	Nyírbátor
Beathus-Aqua	Beathus	Kajdacs
Bencés Természetes Ásványvíz	Ravazd	Bencés 1.
Berzsenyi	Berzsenyi	Balatonfüred
Betyárok Vize	Meleg forrás	Mátraszőlős
Bihari Gyémánt	Bihari kút	Biharugra
Börzsönyi Természetes Ásványvíz	Börzsönyi kút	Perőcsény
Brill	Kutas IX.	Furta
Bükkü Lélek	Fonoda utcai hévízkút	Miskolc
Carolina	II. kút	Tiszakécske
Cegléd 2000	K-333	Cegléd
Civis	Civis	Debrecen
Celli Vulkán Ásványvíz	Cell-8. sz. kút	Celldömölki
Class Aqua Pilis	Piliscsév 7	Piliscsév
Csabai Árpád	Fürdő II.	Békéscsaba
Cserehát I.	Ipari park 2.sz.	Szikszó
Cserehát II.	Ipari park 3.sz.	Szikszó
Cserehát III.	Ipari park 4.sz.	Szikszó
Cserke Kincse	B-31	Cserkeszőlő
Csillaghegyi	B-6	Budapest, III. kerület
Csillaghegyi Kristályvíz	József	Budapest, III. kerület
Csokonai	Csokonai	Debrecen
Dagály	Béke	Budapest, XIII. kerület
Dám	Kispúztai kút	Gyulaj
Diamantina	Diamantina kút	Ötvevény
Dona	Szent György (kis kút) forrás	Bánhorvát-Lázbérc
Éleshegyi	Éleshegyi	Bárdudvarnok
Emese	Emese	Szentkirály
Erika	Kerekdombi	Tiszakécske
Fehérvári Aqua Mathias	Aqua Mathias	Székesfehérvár
Filigrana	Ílzer 2	Monor
Fonyódi	4. sz.	Fonyód
Főnix	Főnix	Hajdúsámson

Trade description	Name of source	Place of exploitation
Galla Aqua	Galla Aqua	Tatabánya
Gellérthegyi Kristályvíz	Juventus	Budapest, Gellérthegy
Goldaqua	Tünde kút	Cégénydányád
Gödi	Strand I.	Alsógöd
Gönci víz	Gönc 1/A	Gönc
Gyömrő Gyöngye	Szent István	Gyömrő
Gyömörő Gyöngye	Zalagyömörő vízműkút	Zalagyömörő
Hajdúszoboszlói	B-310/A	Hajdúszoboszló
Hartai Természetes Ásványvíz	Harta	Hartai
Hercegegyházi Ásványvíz	Hercegegyházi ásványkút	Kerekegyháza
Hírös	K-785	Kecskemét
IVI-QUELL	Kesztölci kút	Kesztölc
Jászok Kincse Ásványvíz	Jászok Kincse kút	Jászdózsza
Káli	K-22	Kál
Kék-Brill	Brill	Dánszentmiklós
Kék Gyémánt	1. sz. kút	Debrecen
Kék-Gyöngy	Tibor	Komoró
Kincs	Gyermekváros kút	Berettyóújfalu
Kincsem Aqua	Kincsem Aqua	Tápiószentmárton
Király forrás	Seregélyesi	Székesfehérvár
Kiskúti	Kiskút	Kisvárd
Klára	1. sz. kút	Hőgyész
Kossuth Lajos	Kossuth	Balatonfüred
Kristályvíz	Kristályvíz kút	Albertirsa
Kumilla	B-77	Szigetvár
Kun-Aqua	Kun-Aqua	Lakitelek
Lilla	Csokonai	Debrecen
Lillafüredi	Vitéz	Miskolc
Margitszigeti Kristályvíz	Margitsziget III.	Budapest XIII.
Margitszigeti Kristályvíz	Margitsziget IV.	Budapest XIII
Marina	Marina kút	Baracska
Mézesvölgyi Veresi	B-15	Veresegyház
Milotai Ásványvíz	Mabiol-Trade 1 sz. kút	Milota
Minaqua Alapi	Alap	Alap

Trade description	Name of source	Place of exploitation
Mineral Aqua	Nyárlőrinc	Nyárlőrinc
Mistral	Mistral	Kisvárdá
Mizse	K-115	Lajosmizse
Mohai 1374	Moha I.	Moha
Mohai 1374	Moha II.	Moha
Mohácsi Kristályvíz	Székelyszabar	Vaskapu kút
Monti	Monti	Monostorapáti
Mozakva Plussz	Mózakva kút	Nemesgulács
Natur Aqua	Natur Aqua	Zalaszentgrót
Natur	Lili-kút	Cégénydányád
NESTLÉ AQUAREL	Kővágóörs	Cédrus forrás
Nora	Agnes ereszke	Tokodaltáró
Nyírádi Kristály	Iza8	Nyirád
Oázis	Oázis	Nagyberény
Óbudai Gyémánt	Óbudai Gyémánt	Budapest 03. kerület
Olup Aqua	Olup Aqua kút	Alap
Pannon-Aqua	Pannon-Aqua I.	Csány
Pannon -Aqua	Pannon -Aqua II.	Csány
Pannon Gyöngye	Pannon-Gyöngye	Csány
Pannonhalma Gyöngye	Levente kút	Écs
Parádi	Csevice II.	Parádsasvár
Pápai	II. kút	Pápa
Pávai Vajna	Gyógyfürdő 4/A	Hajdúszoboszló
Pávai Vajna	Gyógyfürdő 9.sz. kút	Hajdúszoboszló
Peridot	Peridot kút	Pusztazámor
Perőcsényi Természetes Ásványvíz	Perőcsényi kút	Perőcsény
Péterkút	K-47	Kaba
Phoenix Aqua	Phoenix 1.	Bakonysárkány
Polányi	Polányi	Balatonfüred
Poszpi	Pata kút	Patapoklói
Pölöskei Aquafitt	Pölöskei Aquafitt	Pölöske
Primavera	K-110	Lajosmizse
Roland Természetes Ásványvíz	Roland 1	Nagylók
Royal Aqua	Nemesgulácsi	Nemesgulács

Trade description	Name of source	Place of exploitation
Santa Aqua	Santa Aqua	Bicske
Santé	Santé	Szeged
Sárkányvíz	Tóstrand	Bősárkány
Silver Aqua	Silver Aqua	Debrecen
Super Aqua	Germán	Cegléd
Szent Erzsébet	Pesterzsébeti termálkút	Budapest, XX. kerület
Szent Gróth	K-37	Zalaszentgrót
Szent-György hegyi	Szent György-hegyi	Kisapáti
Szentimre Kristályvíz	Tizsaszentimre	Tizsaszentimre
Szent József	Szent József	Eger
Szent László	Szent László	Szeged
Szent Margit	Margit III.	Budapest, XIII. kerület
Szentkirályi	Szentkirályi II.	Szentkirály
Széchenyi István	Széchenyi I.	Budapest, XIV. kerület
SzeSzóAqua	SzeSzóAqua	Cegléd
Szidónia	Szidónia	Röjtökmuzsaj
Szidónia	Szidónia 2.sz.	Röjtökmuzsaj
Tapolcafői Ásványvíz	Vízmű 1/A	Pápa
Theodora Kereki	Theodora Kereki	Mindszentkállya
Theodora Kékkúti	Theodora Kékkúti I.	Kékkút
Theodora Kékkúti	Theodora Kékkúti II.	Kékkút
Theodora Kékkúti	Theodora Kékkúti III.	Kékkút
Theresia	Theresia	Balf
Tisza Szálló	Tisza Szálló	Szolnok
Tóalmási Szent András	K-19/a	Tóalmás
Tóti-Aqua	1.sz.	Lengyeltóti
Turul	Ipari park 1.sz.	Szikszó
Unique	Várpalota-Inota Karsztkút	Várpalota-Inota
Uniquelle	1.sz.	Vasszilvagy
XIXO	Ipari park 5.sz.	Szikszó
Vadkerti Természetes Ásványvíz	1. sz. kút	Soltvadkert
Veritas Gold	Veritas Gold	Albertirsa
Vértes-Aqua	Létavértesi 1	Létavértes
Vértesi Ásványvíz	XV/C akna	Tatabánya

Trade description	Name of source	Place of exploitation
Vértesi Ásványvíz	XIV/A akna	Tatabánya
Viktoria	Viktoria	Akasztó
Visegrádi	Lepence	Visegrád
VITALE	Germán kút	Cegléd
Vitaqua	Germán	Cegléd
Vivien	(Gerecse) Vivien	Bicske
Verde	K-4	Somogyvár
Zafír	1.sz.	Lajosmizse
Zirc Gyöngye	Zirc, 1.sz.	Zirc
Zsilici Gyémánt	Sántosi ásványvízkút	Sántos

List of natural mineral waters recognised by Netherlands

Trade description	Name of source	Place of exploitation
An'leau	An'leau	Annen
Bavaria	Waater	Lieshout
Maresca	Maresca	Maarheeze
Bar-le-Duc	Bar-le-Duc	Utrecht
Euregio	Euregio	Heerlen
Kelderke	Kelderke	Wijlre
Kuiperij	Kuiperij	Wijlre
Sablon	Sablon	Sittard
Sifres	Sifres	Hoensbroek
Sourcy	Sourcy	Bunnik
Sourcy	Idel	Hoensbroek
Source de Ciseau	Source de Ciseau	Heerlen
De Wildert	De Wildert	Dongen

List of natural mineral waters recognised by Austria

Trade description	Name of source	Place of exploitation
Alpquell	Quelle IV (Alpquell)	6230 Münster
Astoria	Astoria Quelle	6230 Münster
Bad Tatzmannsdorfer	Jormannsdorf B7	7431 Bad Tatzmannsdorf
Frankenmarkter	Quelle II	4890 Frankenmarkt
Gasteiner kristallklar	Kristallquelle	5640 Bad Gastein

Trade description	Name of source	Place of exploitation
Güssinger	Güssinger Brunnen I, II, III	7542 Gerersdorf-Sulz
Hofsteigquelle	Hofsteigquelle	6923 Lauterach
Jovina	Jovinaquelle II	7301 Deutschkreuz
LebensQuell	LebensQuell	4830 Frankenmarkt
Limesquelle	Limesquelle	4470 Enns
long life	Stadtquelle Bad Radkersburg	8490 Bad Radkersburg
Markus-Quelle	Markus-Quelle	7033 Pötsching
Minaris	Minaris-Quelle	8483 Deutsch Goritz
Montes	Montes Quelle	6230 Brixlegg
Naturquelle	Naturquelle	7332 Kobersdorf
Peterquelle	Peterquelle Brunnen B II und Peterquelle Brunnen B III	8483 Deutsch Goritz
Preblauer	Paracelsus Quelle Preblau	9461 Prebl
Preblauer	Auen Quelle Preblau	9461 Prebl
Römerquelle	Römerquellen 1, 15 und 17	2413 Edelstal und 2472 Prellenkirchen
SilberQuelle	SilberQuelle	6230 Brixlegg
Sonnenberg Quelle	Quelle Sonnenberg	6714 Nüziders
Sulzegger	Styrianquelle	8422 St. Nikolai ob Drassling
Tauernquelle	Tauernquelle	5640 Hinterschneeberg
Tiroler Quelle	Tiroler Quelle	6230 Münster
Urquelle	Urquelle	7332 Kobersdorf
VitaQuelle	Vita XII Brunnen	7542 Gerersdorf-Sulz
Vitus-Quelle	Vitus-Quelle	2136 Laa/Thaya
Vöslauer	Vöslauer Ursprungsquelle I	2540 Bad Vöslau
Vöslauer	Vöslauer Ursprungsquelle VI	2540 Bad Vöslau
Vöslauer	Vöslauer Ursprungsquelle VII	2540 Bad Vöslau
Waldquelle	Waldquellen 3, 6 und 9	7332 Kobersdorf
Wellness	Wellnessquelle	6230 Brixlegg

List of natural mineral waters recognised by Poland

Trade description	Name of source	Place of exploitation
ALEKS FRUIT	Alex-Fruit 1	Aleksandrów Kujawski
AQUA NATURAL	S-4	Szałe-Trojanów
ARCTIC PLUS	Arctic Plus	Grodzisk Wielkopolski
AUGUSTOWIANKA	Ujęcie M II	Augustów

Trade description	Name of source	Place of exploitation
BUSKOWIANKA ZDRÓJ	Nowy Nurek	Busko Zdrój
CISOWIANKA	Cisowianka	Drzewce k. Nałęczowa
CRISTAL	S-2	Damnica
CYMES MINERALE	SW-2	Wałcz
DŁUGOPOLANKA	Studzienne	Szczawina
DOBROWIANKA	S-3	Rzeniszów
DOLINA BARYCZY	Marcin	Wierzbno
FAMILIJNA	Odwiert nr 5	Gorzanów k. Bystrzycy Kłodzkiej
FINEZJA MUSZYNY	G-2A	Powroźnik, gm. Muszyna
GALICJANKA	P-I	Powroźnik, gm. Muszyna
GALICYA	Galicja	Narol
GRODZISKA	Grodziska Mineralna	Grodzisk Wielkopolski
INOWROCLAWIANKA	Otwór nr 2	Inowrocław
JANOWIANKA	S-1	Janów
JURAJSKA	Jurajska	Postęp k. Myszkowa
JURAJSKI POTOK	S1, S2	Myszków
JURA-SKAŁKA	Studnia nr 2 Skalka	Skalka
JUROFF	Postęp Nr 1	Koziegłowy
KAZIMIERSKA	Otwór Kazimierska 3	Cholewianka, gm. Kazimierz Dolny
KINGA PIENIŃSKA	Kinga II, Zdrój 1, SW-1, Św. Kinga	Krościenko
KORACJUSZ BESKIDZKI	SB 3	Sucha Beskidzka
KROPLA BESKIDU	Kropla Beskidu	Tylicz
KROPLA ZUBRZYKA	Z-2, Z-3	Zubrzyk, gm. Piwniczna
KRÓLEWSKA	Królewska	Kazimierz Dolny
KRYNICA MINERALE	P1	Krynica Dolna
KRYNICZANKA	Zdrój Główny, Jan 13A, K-7, K-9	Krynica
KRYSTYNKA	19 a	Ciechocinek
MAGNEVITA	Marter 1	Sierpc
MAGNUSZEWIANKA	Źródło nr 1	Magnuszew Duży
MINERVITA	HS-1	Humniska, gm. Brzozów
MULTIVITA	Kropla Mineralów	Tylicz
MUSZYNA JÓZEF	Odwiert Józef	Muszyna
MUSZYNA MINERALE	P-III	Powroźnik

Trade description	Name of source	Place of exploitation
MUSZYNA STANISŁAW	Odwiert Stanisław	Muszyna
MUSZYNA ZDRÓJ	Złockie 8 (Z-8)	Muszyna Złockie
MUSZYNA ZDRÓJ II	SL 1	Szczawnik, gm. Muszyna
MUSZYNIANKA	P-1, P-2, M-2, M-4, A-1, Łukasz	Andrzejówka, Milik, Muszyna
MUSZYNIANKA PLUS	A-1, A-2, M-2, M-3, M-4, K-1, Łukasz	Andrzejówka, Milik, Muszyna
MUSZYŃSKIE ZDROJE	Milusia	Muszyna
NAŁĘCZOWIANKA	Ujęcie Nałęczowianka	Kolonia Bochotnica Nałęczów
NAŁĘCZÓW ZDRÓJ	Nałęczów Zdrój	Drzewce k. Nałęczowa
NATURA MINERALE	Ujęcie nr 3 Natura minerale	Wschowa
NATA AQUA	Otwór nr 4	Borkowo
OSTROMECKO	Źródło Marii	Ostromecko, Dąbrowa Chełmińska
PERŁA KRYNICY	K-6 Perła Krynicy	Krynica Zdrój
PERŁA POŁCZYŃSKA	2A	Połczyn-Zdrój
PERŁA SUDETÓW	Perła Sudetów	Bystrzyca Kłodzka
PIWNICZANKA	P-1, P-2, P-5, P-6, P-8, P-9, P-11, P-14 (ujęcie Piwniczanka)	Piwniczna Zdrój
POLANICA ZDRÓJ	Polanica Zdrój nr 4	Stary Wielisław
POLANICZANKA	Odwiert nr 5	Polanica Zdrój
POLARIS	Polaris	Bielsk Podlaski
POLARIS PLUS	Polaris Plus	Czyżów
POLARIS 1	Polaris 1	Grodzisk Wielkopolski
RABKA ZDRÓJ	EC-1	Szczawa
RZESZOWIANKA	S 2	Borek Stary
SELENKA WIENIECKA ZDRÓJ	Otwór nr V	Wieniec Zdrój
SILOE	M1	Mochnaczka Wyzna, gm. Krynica Zdrój
SKARB ŻYCIA	K-8	Krynica Zdrój
SKARB ŻYCIA MUSZYNA	K1	Szczawiczne, gm. Muszyna
SŁOWIANKA	S-3	Damnica
STAROPOLANKA	Staropolanka	Polanica Zdrój
STAROPOLANKA 2000	Staropolanka 2000 (P-300a)	Polanica Zdrój
STYLE WATER	Style Water (otwór nr 5)	Borkowo
SUDECKI ZDRÓJ	Viviana	Wirki 53, gm. Marcinowice

Trade description	Name of source	Place of exploitation
SUDETY	Sudety	Gorzanów
TYMIENICZANKA	Studnia nr 1	Tymienice k. Zduńskiej Woli
USTRONIANKA BIAŁA	Ujęcie nr 1- Basia	Biała
VERANO	Nr 1 - Verano	Wróblew
VITA	Tylicki Zdrój 2	Tylicz
VIVA MINERALE	MI	Augustów
VERONI MINERAL	Ujęcie Veroni	Radom
VOLVITA	Volvita	Radom
WIENIECKA ZDRÓJ	Nr 4	Wieniec Zdrój
WYSOWIANKA	Odwiert W-24	Wysowa Zdrój
WYSOWIANKA ZDRÓJ	R1	Wysowa Zdrój
ZDROJE PIWNICZNA	Otwory Z-3 i Z-3A	Zubrzyk, gm. Piwniczna
ZŁOCKA	SL-3	Szczawik k. Muszyny
ŹRÓDŁA MUSZYNY	G-8	Jastrzębik, gm. Muszyna
ŹRÓDŁA Z OKOLIC MUSZYNY	Otwór Z2	Zubrzyk, gm. Piwniczna

List of natural mineral waters from third countries recognised by Poland

Trade description	Name of source	Place of exploitation
JERMUK	30/62	Jermuk, Republika Armenii
MERKURY	1-M, 2-M, 3-M	Czapajewskoje, Rosja
MORSZYŃSKA	źródło Morszyńskie	Stryj, Ukraina
NARZAN	107 D	Kisłowodzk, Rosja
POLANA KWASOVA	10-k	Rejon Swalawski, Ukraina
POLANA KWASOWA	7Rz	Rejon Swalawski, Ukraina
SAIRME	3A	Baghdati, Gruzja
SWALAWA	Nr 26	Rejon Swalawski, Ukraina
SZAJANSKA	242	Szajan, Ukraina

List of natural mineral waters recognised by Portugal

Trade description	Name of source	Place of exploitation
Água do Fastio	Fastio	Chamoim-Terras de Bouro
Águas de Carvalhelhos	Carvalhelhos	Carvalhelhos- Boticas
Bem-Saúde	Bem-Saúde	Sampaio-Vila Flor
Caldas de Penacova	Caldas de Penacova	Penacova
Castello	Castello	Pisões-Moura

Trade description	Name of source	Place of exploitation
Chic	Chic	Caldas de Monchique-Monchique
Fonte Campilho	Fonte Campilho	Vidago – Chaves
Frize	Frize	Sampaio-Vila Flor
Luso	Luso	Luso-Mealhada
Magnificat	Magnificat	Serra do Trigo - Ilha de S. Miguel-Açores
Melgaço	Melgaço	Quinta do Peso - Melgaço
Monchique	Monchique	Caldas de Monchique-Monchique
Pedras Levíssima	Pedras Salgadas	Pedras Salgadas-Vila Pouca de Aguiar
Pedras Salgadas	Pedras Salgadas	Pedras Salgadas-Vila Pouca de Aguiar
Vidago	Vidago	Vidago - Chaves
Salutis	Salutis	Ferreira-Paredes de Coura
São Silvestre	São Silvestre	Pernes-Santarém
Vimeiro	Vimeiro	Maceira-Torres Vedras
Vitalis	Vitalis	Castelo de Vide
Vitalis	Vital	Envendos-Mação

List of natural mineral waters recognised by Romania

Trade description	Name of source	Place of exploitation
ALPINA BORŞA	Valea Vinişorului	Baia Borşa (judeţul Maramureş)
AMFITEATRU	Izvorul 3 Copou	Iaşi (judeţul Iaşi)
APA CRAIULUI	Izvorul Nr. 5 Gâlgoaie	Dâmbovicioara (judeţul Argeş)
AQUATIQUE	Izvorul Buşteni	Buşteni (judeţul Prahova)
AQUA CARPATICA	Izvorul Băjenaru	Păltiniş (judeţul Suceava)
AQUA CARPATICA	Izvorul Haja	Păltiniş (judeţul Suceava)
AQUA CARPATICA	F2 Păltiniş	Păltiniş (judeţul Suceava)
AQUA SARA	F4750 Boholt	Boholt (judeţul Hunedoara)
AQUA VITAL	Sacoşu Mare	Sacoşu Mare (judeţul Timiş)
BĂILE LIPOVA	F11 Lipova	Lipova (judeţul Arad)
BIBORŢENI	Biborţeni F8	Biborţeni (judeţul Covasna)
BIBORŢENI	Biborţeni F9	Biborţeni (judeţul Covasna)
BILBOR	F1 SNAM	Bilbor (judeţul Harghita)
BILBOR	Q1	Bilbor (judeţul Harghita)

Trade description	Name of source	Place of exploitation
BODOC	Bodoc	Bodoc (județul Covasna)
BORSEC	Borsec	Borsec (județul Harghita)
BORSEC	Făget BORSEC	Borsec (județul Harghita)
BUCOVINA	C7 Secu	Dorna Candrenilor (județul Suceava)
BUCOVINA	Roșu	Vatra Dornei (județul Suceava)
BUZIAȘ	FII bis Buziaș	Buziaș (județul Timiș)
CARREFOUR	F1 bis	Zizin (județul Brașov)
CARPATINA	Toșorog	Toșorog (județul Neamț)
CERTEZE	Certeze	Certeze (județul Satu Mare)
CEZARA	Băcăia	Băcăia (județul Hunedoara)
CHEILE BICAZULUI	Bicazul Ardelean (foraj FH1)	Bicazul Ardelean (județul Neamț)
CRISTALINA	FI	Sâncrăieni (județul Harghita)
CRISTALUL MUNȚILOR	Izvorul Pârăul Rece	Vama Buzăului (județul Brașov)
DEALUL CETĂȚII	FH1	Miercurea-Ciuc (județul Harghita)
DORNA	Dorna Candrenilor	Dorna Candrenilor (județul Suceava)
DORNA	Poiana Vinului	Poiana Vinului/Dealul Floreni (jud.Suceava)
HERA	Hera	Budureasa (județul Bihor)
HERCULANE	Domogled	Băile Herculane (județul Caraș-Severin)
IZVORUL ALB	Izvorul Alb	Dorna Candrenilor (județul Suceava)
IZVORUL MINUNILOR	Izvorul Minunilor - Stâna de Vale	Stâna de Vale (județul Bihor)
IZVORUL TĂMĂDUIRII	Sonda F1	Stoiceni Târgu Lăpuș (județul Maramureș)
KEIA	Izvorul Zăganului	Ciucaș (județul Prahova)
LIPOVA	Lipova	Lipova (județul Arad)
LITHINIA	FH2 Parhida	Parhida (județul Bihor)
MALNAȘ MARIA	Izvorul Maria	Malnaș (județul Covasna)
MIRACOL	FH2 Chimidia	Chimidia (județul Hunedoara)
OAȘ	Certeze Negrești	Negrești (județul Satu Mare)
ODYSEUS	F1 bis	Malnaș Băi (județul Covasna)
PERENNA PREMIER	Calina	Dognecea (județul Caraș-Severin)
PERLA COVASNEI	F1	Tg. Secuiesc (județul Covasna)
PERLA HARGHITEI	F1, F2	Sâncrăieni (județul Harghita)
PERLA HARGHITEI	FH2	Sântimbru (județul Harghita)
POIANA NEGRII	Poiana Negrii	Poiana Negrii (județul Suceava)
RARĂUL	Puț Lebeș, FH1	Fundul Moldovei (județul Suceava)

Trade description	Name of source	Place of exploitation
RIOBA	F6 Boholt	Boholt (județul Hunedoara)
SAGUARO	F3	Tg. Secuiesc (județul Covasna)
SESTINA	Șeștina	Valea Sălardului (județul Mureș)
SPRING HARGHITA	FH2M	Miercurea-Ciuc (județul Harghita)
STÂNCENI	Stânceni	Stânceni (județul Mureș)
TIVA HARGHITA	F8	Sâncrăieni (județul Harghita)
TUȘNAD	Tușnad	Tușnad (județul Harghita)
TUȘNAD	Tușnad Nou	Tușnad (județul Harghita)
VALEA BRAZILOR	Biborțeni F7	Biborțeni (județul Covasna)
VALEA IZVOARELOR	S1, S2 Covasna	Covasna (județul Covasna)
VÂLCELE	Elisabeta	Vâlcele (județul Covasna)
ZIZIN	F1, F4	Zizin (județul Brașov)
7 IZVOARE	Șapte Izvoare	Dobrești (județul Dâmbovița)

List of natural mineral waters recognised by Slovenia

Trade description	Name of source	Place of exploitation
Donat Mg	Donat	Rogaška Slatina
Tiha	Tiha	Rogaška Slatina
Radenska Classic Petanjski Vrelec	Petanjski Vrelec	Radenci
Radenska Kraljevi Vrelec	Kraljevi Vrelec	Radenci
Kaplja	Zlata Kaplja	Radomlje
Dana	Dana	Mirna
Primaqua	Primaqua	Radenci
Costella	Maks-2	Fara
Radenska Naturelle	Radenska Naturelle	Radenci

List of natural mineral waters from third countries recognised by Slovenia

Trade description	Name of source	Place of exploitation
Jamnica	Janino vrelo	Pisarovina, Croatia
Vrnjci	Borjak III	Vrnjačka Banja, Srbija
Voda Vrnjci Classic	Snežnik	Vrnjačka Banja, Srbija

List of natural mineral waters recognised by Slovakia

Trade description	Name of source	Place of exploitation
Budiš	B-5	038 23 Budiš

Trade description	Name of source	Place of exploitation
	B-6	038 23 Budiš
Fatra	BJ-2	036 01 Martin - Záturčie
Maštinská	HM-1	987 01 Maštinec
Ave	ST-1	
Lubovnianska	LZ-6 (Veronika)	065 11 Nová Ľubovňa
Gemerka	HVŠ-1	982 01 Tornaľa
Maxia	ŠB-12	
Baldovská	BV-1	053 04 Baldovce
	B-A4	
Odyseus	S-1 (Cifrovany)	082 36 Lipovce
Salvator	S-2 (Salvator)	082 36 Lipovce
Slatina	BB-2	935 84 Slatina
Santovka	B-6	935 87 Santovka
Čerínska minerálka	ČAM-1	974 01 Čačín
Mitická	MP-1	913 22 Trenčianske Mitice
Kláštorná	KM-1	038 43 Kláštor pod Znievom
Matúšov prameň	Matúšov prameň vrt CC-1	916 34 Lúka
Korytnica	S-2 (Antonín)	034 73 Liptovská osada - časť Korytnica

List of natural mineral waters from third countries recognised by Slovakia

Trade description	Name of source	Place of exploitation
Jana	Sveta Jana	South West from Zagreb in the district of Toplice, Gorica Svetojanska, Croatia

List of natural mineral waters recognised by Finland

Trade description	Name of source	Place of exploitation
Vellamo	Viikinäisten syvälahde	Heinola

List of natural mineral waters recognised by Sweden

Trade description	Name of source	Place of exploitation
Åre Källa	Åre Källa	Englandsviken, Åre
Coop	Hellebrunn	Jeppetorp, Hällefors
Guttsta källa	Guttsta källa	Guttsta, Kolsva
Jon-Hans	Flästa Källa	Flästa, Bollnäs
Norrland Coldspring Water AB	Hirvasäive	Hirvasäive
Ramlösa	Döbelius källa	Ramlösa Hälsobrunn, Helsingborg

Trade description	Name of source	Place of exploitation
Ramlösa	Jacobs källa	Ramlösa Hälsobrunn, Helsingborg
Storskogen	Storskogens källa	Storskogen 12, Töllsjö
Söderåsen	Söderåsen	Mossvägen, Hofors
Tollagården	Tollagårdens källa	Tollagården, Gesunda

List of natural mineral waters recognised by United Kingdom

Trade description	Name of source	Place of exploitation
<i>Not yet on sale</i>	Amerston borehole	Amerston Hall Farm, Elwick
Schweppes Abbey Well	Schweppes Abbey Well	Abbey Well, Morpeth, Northumberland
Aqua Pura	Aqua Pura	Low Plains, Armathwaite, Cumbria
Ashbeck	Ashbeck	Low Plains, Armathwaite, Cumbria
Bath Natural Mineral Water	Stall Street	Stall Street, Bath
Belu	Source B	LLwyndewi Isaf, Trap, Llandeilo, Wales
Belu	UK3	Church Stretton, Shropshire
Belu Natural Mineral Water	Belu Natural Mineral Water	Wolverton, Church Stretton, Shropshire
Blenheim Water	Blenheim Park	Blenheim Palace, Woodstock, Oxfordshire
Blue Keld Springs	Blue Keld Spring	Throstle nest Farm, Cranswick, East Riding of Yorkshire
Brecon Carreg	Brecon Carreg	Llwyndewi Isaf, Trap, Llandeilo, Carmarthenshire
Buxton	St Ann's	The Natural Baths, Buxton, Derbyshire
Calypso Natural Mineral Water	Calypso Springs at Calypso Soft Drinks	Wrexham
Castle Spring	Castle	Lon Parcwr, Ruthin
Celtic Spring	CS1	Churchstoke, Powys
Celtic Spring	Silverbrook Falls	Churchstoke, Montgomery, Powys
Celtic Vale Natural Mineral Water	Celtic Vale Spring	Springvale, Longtown, Herefordshire
Cerist	Cerist	Llawr Cae, Dinas Mawddwy, Machynlleth, Powys
Charles Wells Mineral Water	Park Road Wells	Park Road, Bedford
Classic	Classic	Edward Street, Lurgan, Craigavon, Co. Armagh
Crystal Falls	Crystal Falls	Blaen Twyni Farm, Glyntawe, Penycae, Powys
<i>NA no production at present</i>	Dartmoor	Lower Hurston Farm, Chagford, Devon

Trade description	Name of source	Place of exploitation
Decantae	Decantae	Trofarth Farm, Trofarth, Conwy
Deeside Natural Mineral Water	Deeside, Lower Spring	Pannanich Wells, Ballater
Eden Falls	Eden Falls	Low Plains, Armathwaite, Cumbria
Elmhurst Spring	Elmhurst Spring, Borehole 1	Elmhurst, Lichfield, Staffs
Fairbourne Springs	Fairbourne Springs	Churchstoke, Powys
Findlays	Findlays Spring	Pitcox, East Lothian
Garclaugh Spring,	Garclaugh Spring	Meikle Garcleugh Farm, New Cumnock
GB	GB	Round Plantation, Grange Road Duxford, Cambridge
Gleneagles	Gleneagles	Blackford, Perthshire
Glengarr	Sorn	Westown, Farm, Sorn, Ayrshire
Gower Spring	G ower	Staffal Haegr Farm, Llanrhidian, Swansea
NA no production at present	Bridgehouse Mills	Bridgehouse Lane, Haworth
High Linn Spring	High Linn Spring	Meikle Garcleugh Farm, New Cumnock
Hildon	Hildon	Broughton, Hampshire
Houlston Manor Natural Mineral Water	Houlston Manor	Myddle, Shropshire
Ice Valley	Shepley Spring No. 1	Shepley Spring Ltd., The Knowle, Shepley, Huddersfield
iii	Priory Falls Spring	Churchstoke, Powys
Islay Water	Maol Dubh	Laggan Estate, Isle of Islay
Isle of Skye Natural Mineral Water	Flodigarry Boreholes 1 & 2	Flodigarry Staffin Isle of Skye
Kingshill	Kingshill	Kingshill Plantation
NA no production at present	Hangingmyre Farm	Hangingmyre Farm, Fife
Maple Spring	Maple Spring Borehole 4	Burntwood Staffordshire
Matlock Spring	Matlock	Water Lane, Cranford, Nr Matlock
Montgomery Spring	Montgomery Spring	Churchstoke, Powys
NA no production at present	Source 1	Low Plains, Armathwaite, Cumbria
NA no production at present	Source 3	Low Plains, Armathwaite, Cumbria
Peartree Well	Peartree Well	Framfield, East Sussex
Pennine Spring Natural Mineral Water	Pennine Spring	Willow Lane, Huddersfield
Pennine Valley	Shepley Spring No.3	Shepley Spring Ltd, The Knowle, Shepley, Huddersfield
Penwith Hills	Lower Penderleath Farm	Towednack, St Ives
Prysg	Prysg spring	Carmarthen, Carmarthenshire, Wales

Trade description	Name of source	Place of exploitation
Purely Scottish	Purely Scottish	Oldhamstocks, East Lothian
Radnor Hills	Radnor Hills	Heartsease, Knighton, Powys
River Rock	River Rock	The Green, Lambeg, Lisburn, Co. Antrim
<i>NA no production at present</i>	Rockhead Spring	Ashwood Dale, Buxton, Derbyshire
Rocwell Spring	Rocwell	Limehill Road, Pomeroy, Co. Tyrone
Royal Deeside Natural Mineral Water	Upper East Spring	Pannanich Wells Ballater
Royal Spring Natural Mineral Water	Royal Spring	Goulbourne Street, Keighley Keighley, West Yorkshire
Scottish Border Springs	PS1	Woollands Farm, Oldhamstocks, East Lothian
Shropshire Hills Natural Mineral Water	Shropshire Hills	Wolverton, Church Stretton, Shropshire
Speyside Glenlivet Natural Mineral Water	Slochd Spring	Braes of Glenlivet, Ballindalloch Banffshire
Springbourne	Springbourne	Churchstoke Montgomery, Powys
Stretton Hills	Source 6	Church Stretton Shropshire
St Ronan's Spring	St Ronan's	Innerleithen, Tweedale
Ty Nant	Ty Nant Water	Bethania Llanon
Waitrose Welsh Spring	Waitrose Welsh	Llwyndewi Isaf, Trap, Llandeilo, Carmarthenshire
Weir House Natural Mineral Water	Borehole 1	Weir House Spring, Latimer Road, Chesham, Buckinghamshire
Windsor Natural Mineral Water	Windsor House Spring	Windsor House, Southbourne, Emsworth, Hampshire

List of natural mineral waters from third countries recognised by United Kingdom

Trade description	Name of source	Place of exploitation
Knjaz Miloš	Izvorište Mladost	Arandjelovac, Serbia
Minaqua	Fruska Gora Spring	Novi Sad, Serbia Montenegro

EUROPEAN ECONOMIC AREA

List of natural mineral waters recognised by Norway

In accordance with Article 1 of Directive 2009/54/EC of the European Parliament and of the Council of 18 June 2009 on the exploitation and marketing of natural mineral waters as included in the EEA Agreement, Annex II, Chapter XII, point 26, the Commission has been informed by Norway of the following consolidated list which replaces any previously published list in the EEA Section of and the EEA Supplement to the *Official Journal of European Union*.

Trade description	Name of source	Place of exploitation
Bonaqua Silver	Telemark kilden	Fyresdal
Eira	Eira kilden	Eresfjord
Farris	Kong Olavs kilde	Larvik
Isbre	Isbre kilden	Buhaugen, Osa, Ulvik
Isklar	Isklar kildene	Vikebygd i Ullensvang
Modal	Modal kilden	Fyresdal
Olden	Blåfjell kilden	Olderdalen
Osa	Osa kilden	Ulvik/Hardanger
Rustad Spring	Rustad kilden	Rustad/Elverum

List of natural mineral waters recognised by Iceland

In accordance with Article 1 of Directive 2009/54/EC of the European Parliament and of the Council of 18 June 2009 on the exploitation and marketing of natural mineral waters as included in the EEA Agreement, Annex II, Chapter XII, point 26, the Commission has been informed by Iceland of the following consolidated list which replaces any previously published list in the EEA Section of and the EEA Supplement to the *Official Journal of European Union*.

Trade description	Name of Source	Place of exploitation
Icelandic Glacial	Ölfus Spring	Hlíðarendi, Ölfus, Selfoss

Information communicated by Member States regarding State aid granted under Commission Regulation (EC) No 1857/2006 on the application of Articles 87 and 88 of the Treaty to State aid to small and medium-sized enterprises active in the production of agricultural products and amending Regulation (EC) No 70/2001

(2013/C 315/02)

Aid No: SA.37357 (13/XA)

Member State: Cyprus

Region: Cyprus

Title of aid scheme or name of company receiving an individual aid: Πρόγραμμα Έκτακτο Σχέδιο Δράσης για Έλεγχο και Εκρίζωση της επιδημίας Ψευδοπανώλους των Πτηνών

Legal basis:

1) Οι περί της Υγείας των Ζώων Νόμοι του 2001 έως 2012. (οι λοιπές νομικές βάσεις φαίνονται στο πεδίο «Άλλες Πληροφορίες»)

Annual expenditure planned under the scheme or overall amount of individual aid granted to the company: Annual overall amount of the budget planned under the scheme: EUR 638 000

Maximum aid intensity: 100 %

Duration of scheme or individual aid award: 12.10.2013-31.12.2013

Objective of aid: Animal diseases (Art. 10 of Reg. (EC) No 1857/2006)

Sector(s) concerned: Raising of poultry

Name and address of the granting authority:

Κτηνιατρικές Υπηρεσίες
Κτηνιατρικές Υπηρεσίες, 1417 Λευκωσία

Website:

<http://www.moa.gov.cy/moa/vs/vs.nsf/all/2E238609AAC07161C2257B910024FDC5?opendocument>

Other information: —

Aid No: SA.37427 (13/XA)

Member State: Bulgaria

Region: Bulgaria

Title of aid scheme or name of company receiving an individual aid: Помощ за участие в изложения за промотиране на плодове

Legal basis: Чл.12, ал.1 т.10 от Закона за подпомагане на земеделските производители и при спазване разпоредбите на Регламент (ЕО) № 1857/2006; Указания, приети с Решение на Управителния съвет на ДФ „Земеделие“ за схема на държавна помощ

Annual expenditure planned under the scheme or overall amount of individual aid granted to the company: Annual overall amount of the budget planned under the scheme: BGN 14 100

Maximum aid intensity: 100 %

Duration of scheme or individual aid award: 7.10.2013-31.12.2013

Objective of aid: Technical support (Art. 15 of Reg. (EC) No 1857/2006)

Sector(s) concerned: Crop and animal production, hunting and related service activities

Name and address of the granting authority:

Държавен фонд „Земеделие“
гр. София 1618 бул. Цар Борис III № 138

Website:

http://dfz.bg/assets/5460/shema_panairi_ovoshtarstvo_d.doc

Other information: —

Aid No: SA.37454 (13/XA)

Member State: Spain

Region: COMUNIDAD VALENCIANA

Title of aid scheme or name of company receiving an individual aid: Ayudas para el control oficial lechero para el ejercicio 2013

Legal basis: RESOLUCIÓN de 2013, del conseller de Presidencia y Agricultura, Pesca, Alimentación y Agua, por la que se convocan las ayudas para el control oficial lechero para el ejercicio 2013 en la Comunitat Valenciana. Bases en la Orden de 10 de julio de 2008 que modifica la orden de 5 de mayo de 2006, que aprueba las bases reguladoras del control lechero oficial

Annual expenditure planned under the scheme or overall amount of individual aid granted to the company: Annual overall amount of the budget planned under the scheme: EUR 40 000

Maximum aid intensity: 70 %

Duration of scheme or individual aid award: 12.10.2013-30.12.2013

Objective of aid: Livestock sector (Art. 16 of Reg. (EC) No 1857/2006)

Sector(s) concerned: Crop and animal production, hunting and related service activities

Name and address of the granting authority:

Dir. Gral. Prod. Agraria y Ganaderia. Consellería Presidencia, Agric.Pesca, Alim.y Ag
C/ Amadeo de Savoia, 2
46010 Valencia
España

Website:

<http://www.agricultura.gva.es/documents/170659/179159/Resol+control+lechero+2013.pdf/825a6f52-432e-4ff5-b17d-4956d8f12b54>

Other information: —

Aid No: SA.37487 (13/XA)

Member State: Czech Republic

Region: Czech Republic

Title of aid scheme or name of company receiving an individual aid: Podpora poradenství v zemědělství – Regionální přenos informací zajišťovaný prostřednictvím Krajských informačních středisek pro rozvoj zemědělství a venkova (KIS)

Legal basis:

- 1) Zákon č. 252/1997 Sb., o zemědělství
- 2) Zásady, kterými se stanovují podmínky pro poskytování dotací pro příslušný rok na základě § 2 a § 2d zákona č. 252/1997 Sb., o zemědělství

Annual expenditure planned under the scheme or overall amount of individual aid granted to the company: Annual overall amount of the budget planned under the scheme: CZK 10 000 000

Maximum aid intensity: 100 %

Duration of scheme or individual aid award: 1.1.2014-31.12.2020

Objective of aid: Technical support (Art. 15 of Reg. (EC) No 1857/2006)

Sector(s) concerned: Crop and animal production, hunting and related service activities

Name and address of the granting authority:

Ministerstvo zemědělství
Těšnov 17
117 05 Praha 1
Česká republika

Website:

http://eagri.cz/public/web/file/223499/Prakticka_prirucka_Zasady_2013.pdf

Other information: —

Aid No: SA.37503 (13/XA)

Member State: France

Region: VAR

Title of aid scheme or name of company receiving an individual aid: Aide à l'incitation à l'assurance contre la grêle-2013

Legal basis:

Articles L. 1511-1 et suivants du code général des collectivités territoriales

Délibération du Conseil Général n° A4 du 14 février 2013 donnant délégations à la Commission Permanente, notamment en matière d'attribution de subventions ou participations aux personnes de droit public ou privé

Annual expenditure planned under the scheme or overall amount of individual aid granted to the company: Annual overall amount of the budget planned under the scheme: EUR 50 000

Maximum aid intensity: 5 %

Duration of scheme or individual aid award: 21.10.2013-31.12.2013

Objective of aid: Insurance premiums (Art. 12 of Reg. (EC) No 1857/2006)

Sector(s) concerned: AGRICULTURE, FORESTRY AND FISHING

Name and address of the granting authority:

Conseil Général du Var
90 avenue des lices
83076 TOULON CEDEX

Website:

http://www.var.fr/conseil_general/developpement-economique-touristique-et-agricole/assurance-contre-la-grele

Other information: —

Information communicated by Member States regarding State aid granted under Commission Regulation (EC) No 800/2008 declaring certain categories of aid compatible with the common market in application of Articles 87 and 88 of the Treaty (General Block Exemption Regulation)

(Text with EEA relevance)

(2013/C 315/03)

Reference number of the State Aid	SA.36968 (13/X)	
Member State	Czech Republic	
Member State reference number	—	
Name of the Region (NUTS)	Czech Republic Article 107(3)(a)	
Granting authority	Státní fond životního prostředí ČR Olbrachtova 2006/4, 140 00, Praha 4 http://www.sfzp.cz	
Title of the aid measure	Nová zelená úsporám 2013	
National legal basis (Reference to the relevant national official publication)	Zákon č. 388/1991 Sb., o Státním fondu životního prostředí České republiky, ve znění pozdějších předpisů Směrnice Ministerstva životního prostředí č. 9/2013 o poskytování finančních prostředků v rámci programu Nová zelená úsporám 2013	
Type of measure	Scheme	
Amendment of an existing aid measure	—	
Duration	13.6.2013-31.12.2014	
Economic sector(s) concerned	All economic sectors eligible to receive aid	
Type of beneficiary	SME, large enterprise	
Annual overall amount of the budget planned under the scheme	CZK 800 000 000	
For guarantees	—	
Aid Instrument (Article 5)	Direct grant	
Reference to the Commission Decision	—	
If co-financed by Community funds	—	
Objectives	Maximum aid intensity in % or Maximum aid amount in national currency	SME-bonuses in %
Environmental investment aid for energy saving measures (Art. 21)	20,0000 %	20 %
Environmental investment aid for the promotion of energy from renewable energy sources (Art. 23)	45,0000 %	20 %

Web link to the full text of the aid measure:

<http://www.nzu2013.cz>

Reference number of the State Aid	SA.36993 (13/X)	
Member State	Germany	
Member State reference number	—	
Name of the Region (NUTS)	HAMBURG Non-assisted areas	
Granting authority	Behörde für Stadtentwicklung und Umwelt Hamburg Neuenfelder Str. 19, 21109 Hamburg http://www.hamburg.de/bsu	
Title of the aid measure	Gründerhaus Eifflerstraße	
National legal basis (Reference to the relevant national official publication)	— §§ 23 und 44 der Haushaltsordnung der Freien und Hansestadt Hamburg (LHO) — Operationelles Programm EFRE Hamburg 2007 bis 2013 in der Fassung vom 23. November 2007 (CCI: 2007 DE 162 P 009)	
Type of measure	Ad hoc aid	
Amendment of an existing aid measure	—	
Date of granting	From 3.6.2013	
Economic sector(s) concerned	All economic sectors eligible to receive aid	
Type of beneficiary	SME — steg Kreativhaus GmbH	
Overall amount of the ad hoc aid awarded to the undertaking	EUR 450 000	
For guarantees	—	
Aid Instrument (Article 5)	Direct grant	
Reference to the Commission Decision	—	
If co-financed by Community funds	WSB 58319 2011 UP810.36-12/02 WSB 2 — EUR 0,45 (in millions)	
Objectives	Maximum aid intensity in % or Maximum aid amount in national currency	SME-bonuses in %
SME investment and employment aid (Art.15)	10,0000 %	—

Web link to the full text of the aid measure:

<http://www.hamburg.de/bekanntmachungen/>

Reference number of the State Aid	SA.37195 (13/X)	
Member State	Italy	
Member State reference number	—	
Name of the Region (NUTS)	TRENTO Non-assisted areas	

Granting authority	Provincia autonoma di Trento Agenzia del lavoro della Provincia autonoma di Trento, via Guardini 75 — 38121 TRENTO WWW.AGENZIALAVORO.TN.IT	
Title of the aid measure	Finanziamento di progetti integrati di formazione, inserimento occupazionale e accompagnamento di soggetti svantaggiati	
National legal basis (Reference to the relevant national official publication)	— legge provinciale 27 dicembre 2012, n. 25 — art. 58 (b.u. 27.12.2012, n. 52, suppl. n. 2) — deliberazione Giunta provinciale 10 maggio 2013, n. 833 — deliberazione Consiglio di amministrazione Agenzia del lavoro 25 luglio 2013, n. 45 (Approvazione delle disposizioni attuative dell'intervento 18ter «Finanziamento di progetti integrati di formazione, inserimento occupazionale e accompagnamento di soggetti svantaggiati»)	
Type of measure	Scheme	
Amendment of an existing aid measure	—	
Duration	25.7.2013-30.6.2014	
Economic sector(s) concerned	All economic sectors eligible to receive aid	
Type of beneficiary	SME,large enterprise	
Annual overall amount of the budget planned under the scheme	EUR 1 800 000	
For guarantees	—	
Aid Instrument (Article 5)	Direct grant	
Reference to the Commission Decision	—	
If co-financed by Community funds	Programma operativo FSE della Provincia autonoma di Trento adottato con decisione della Commissione europea n. 5770 di data 21 novembre 2007 — EUR 0,50 (in millions)	
Objectives	Maximum aid intensity in % or Maximum aid amount in national currency	SME-bonuses in %
General training (Art. 38(2))	60,0000 %	20 %

Web link to the full text of the aid measure:

<http://www.agenzialavoro.tn.it/agenzia/lex/2011-2013/RegolamentiAdL>

Reference number of the State Aid	SA.37205 (13/X)	
Member State	Spain	
Member State reference number	—	
Name of the Region (NUTS)	ESPANA Article 107(3)(a),Article 107(3)(c),Non-assisted areas,Mixed	

Granting authority	Secretario de Estado de Medio Ambiente Ministerio de Agricultura, Alimentación y Medio Ambiente Paseo de Infanta Isabel, 1 28071 Madrid ESPAÑA http://www.magrama.gob.es/es/calidad-y-evaluacion-ambiental/temas/plan-pima-aire/default.aspx	
Title of the aid measure	Plan de Impulso al Medio Ambiente «PIMA Aire» para la adquisición de vehículos comerciales	
National legal basis (Reference to the relevant national official publication)	Real Decreto 631/2013, de 2 de agosto, por el que se modifica el Real Decreto 89/2013, de 8 de febrero, por el que se regula la concesión directa de ayudas del Plan de Impulso al Medio Ambiente «PIMA Aire» para la adquisición de vehículos comerciales.	
Type of measure	Scheme	
Amendment of an existing aid measure	Modification SA.36322	
Duration	4.8.2013-31.12.2013	
Economic sector(s) concerned	Sale of motor vehicles	
Type of beneficiary	SME,large enterprise	
Annual overall amount of the budget planned under the scheme	EUR 38 000 000	
For guarantees	—	
Aid Instrument (Article 5)	Direct grant	
Reference to the Commission Decision	—	
If co-financed by Community funds	—	
Objectives	Maximum aid intensity in % or Maximum aid amount in national currency	SME-bonuses in %
Aid for the acquisition of new transport vehicles which go beyond Community standards or which increase the level of environmental protection in the absence of Community standards (Art. 19)	35,0000 %	20 %

Web link to the full text of the aid measure:

<http://www.boe.es/boe/dias/2013/08/03/pdfs/BOE-A-2013-8566.pdf>

Reference number of the State Aid	SA.37216 (13/X)
Member State	Latvia
Member State reference number	—
Name of the Region (NUTS)	Article 107(3)(a)
Granting authority	Latvijas Investīciju un attīstības aģentūra Pērses iela 2, Rīga, Latvija, LV-1442 www.liaa.gov.lv

Title of the aid measure	2.grozījumi valsts atbalsta programmā “Augstas pievienotās vērtības investīcijas” 2.kārta”	
National legal basis (Reference to the relevant national official publication)	2011.gada 19.oktobra Ministru kabineta noteikumi Nr.817 “Noteikumi par darbības programmas “Uzņēmējdarbība un inovācijas” papildinājuma 2.1.2.4.aktivitāti “Augstas pievienotās vērtības investīcijas” Darbības programma “Uzņēmējdarbība un inovācijas” (269.1. – 269.4. punkts) Darbības programmas “Uzņēmējdarbība un inovācijas” papildinājums (76.1 – 76.6 punkts)	
Type of measure	Scheme	
Amendment of an existing aid measure	Prolongation SA.34267	
Duration	3.8.2013-31.12.2013	
Economic sector(s) concerned	All economic sectors eligible to receive aid	
Type of beneficiary	SME,large enterprise	
Annual overall amount of the budget planned under the scheme	LVL 26 580 000	
For guarantees	—	
Aid Instrument (Article 5)	Direct grant	
Reference to the Commission Decision	—	
If co-financed by Community funds	KOMISIJAS LĒMUMS 2007-IX-24, ar ko pieņem darbības programmu “Uzņēmējdarbība un Inovācijas” Kopienas palīdzībai no Eiropas Reģionālās attīstības fonda atbilstīgi konverģences mērķim Latvijā CCI 2007 LV 16 1 PO 001 — LVL 11,33 (in millions)	
Objectives	Maximum aid intensity in % or Maximum aid amount in national currency	SME-bonuses in %
Regional aid — scheme (art. 13)	35,0000 %	0 %

Web link to the full text of the aid measure:

<http://www.likumi.lv/doc.php?id=238461>

V

*(Announcements)*PROCEDURES RELATING TO THE IMPLEMENTATION OF COMPETITION
POLICY

EUROPEAN COMMISSION

STATE AID — GERMANY

**State aid No SA.29338 (2013/C-30) (ex 2013N-504) — Increase of the second-loss guarantee for
HSH Nordbank AG****Invitation to submit comments pursuant to Article 108(2) TFEU***(Text with EEA relevance)**(2013/C 315/04)*

By means of the letter dated 21 June 2013 reproduced in the authentic language on the pages following this summary, the Commission notified Germany of its decision to initiate the procedure laid down in Article 108(2) TFEU concerning the abovementioned aid/measure.

Interested parties may submit their comments within one month of the date of publication of this summary and the following letter, to:

European Commission
Directorate-General for Competition
State Aid Greffe
Rue de la Loi/Wetstraat, 200
1049 Bruxelles/Brussel
BELGIQUE/BELGIË
Fax No: +32-2-296-1242

These comments will be communicated to Germany. Confidential treatment of the identity of the interested party submitting the comments may be requested in writing, stating the reasons for the request.

I. PROCEDURE

- (1) On 20 September 2011, the Commission approved a second-loss guarantee in the amount of EUR 10 billion in favour of HSH Nordbank AG ('HSH') to protect a defined reference portfolio with a book value of around EUR 185 billion against credit defaults. In 2011, HSH had partially cancelled the guarantee, reducing the ceiling amount from EUR 10 billion to EUR 7 billion.
- (2) On 22 May 2013, Germany notified an increase of the ceiling amount of the guarantee from EUR 7 billion back to EUR 10 billion, claiming that it was not new aid but had already been approved under the 2011 decision. Germany explained that, as the increase is required to

ensure a capitalisation of 9 % CT1 EBA capital, an authorisation of that measure before July 2013 would in any event be required for reasons of financial stability.

**II. THE AID IN RESPECT OF WHICH THE COMMISSION IS
INITIATING THE PROCEDURE**

- (3) Germany submits that the reason for an increase of the guarantee stems from a persistently strained market environment, especially in the area of shipping, and the decline in the Euro's value against the US dollar. Those factors caused an increase in the risk weight of the second-loss guarantee tranche, thus putting into question if the second-loss guarantee could still ensure the risk transfer and capital neutrality of the portfolio.

- (4) The measure is remunerated with an annual fee of 4 % on the nominal amount plus a lump sum payment of ca. EUR 275 million, thus putting guarantor and beneficiary into the same economic position which would have existed if the partial cancellations had never occurred.

III. PRELIMINARY ASSESSMENT

- (5) The Commission considers the increase to be new State aid. Therefore the aid would be additional State aid which requires a new assessment of the entire restructuring plan. Such a fresh assessment concerns the ability of restructuring aid to restore viability of the beneficiary which needs to be reassessed on the basis of the changed market environment. Conversely, regarding the assessment of burden-sharing and mitigating distortions of competition, the existing measures still seem apt to ensure compatibility.
- (6) With respect to viability, the Commission notes that HSH still assumes that the shipping markets will start to recover as of 2014 while other market actors have taken a more

pessimistic view. Moreover, the Commission observes that the increase of the guarantee will result in additional guarantee fees which significantly affect HSH's future profitability. While HSH has incorporated those costs into its new business plan, it has not provided an updated stress scenario. It has to be reviewed whether the level of remuneration is compatible with HSH's financial capacities, in particular in case of a prolonged crisis; the Commission thus has doubts as to whether the business plan is sufficiently prudent.

IV. TEMPORARY APPROVAL

- (7) Due to those doubts the Commission must commence a formal investigation but at the same time accepts that the aid measure is temporarily compatible with the internal market.

In accordance with Article 14 of Council Regulation (EC) No 659/1999 all unlawful aid can be subject to recovery from the recipient.

TEXT OF LETTER

The Commission wishes to inform the German authorities that, having examined the information supplied by your authorities on the measure referred to above, it has decided to initiate the procedure laid down in Article 108(2) of the Treaty on the Functioning of the European Union (hereinafter "TFEU").

I. PROCEDURE

- (1) On 20 September 2011, the Commission adopted a Decision (hereinafter the "2011 restructuring decision")⁽¹⁾ in relation to several State aid measures in favour of HSH Nordbank AG (hereinafter "HSH"), including a second-loss guarantee in the nominal amount of EUR 10 billion.
- (2) On 9 March, 18 June, and 6 September 2011, HSH had cancelled parts of the second-loss guarantee, ultimately reducing the ceiling amount of the second-loss guarantee to EUR 7 billion.
- (3) In September 2012, Germany informed the Commission about the potential need to increase the ceiling amount of that second-loss guarantee.
- (4) On 3 May 2013, Germany informed the Commission about the course of negotiations with J.C. Flowers & Co. LLC (hereinafter "J.C. Flowers") on a third-loss guarantee for HSH. Those negotiations had ultimately failed.
- (5) On 22 May 2013, Germany notified to the Commission that the State of Schleswig-Holstein (hereinafter "Schleswig-Holstein") and the City State of Hamburg (hereinafter "Hamburg") intend to increase the ceiling amount of the second-loss guarantee from EUR 7 billion back to EUR 10 billion.
- (6) Along with the notification of 22 May 2013, Germany submitted an updated medium-term business plan of HSH for the period from 2013 to 2015 (hereinafter "new business plan").
- (7) On 4 June 2013, Germany submitted a letter by the German banking regulator Bundesanstalt für Finanzdienstleistungsaufsicht (hereinafter "BaFin").
- (8) Germany has exceptionally agreed that the authentic language for this decision should be English.

II. FACTS

HSH Nordbank AG

- (9) HSH is the fifth-largest German Landesbank, with head offices in Hamburg and Kiel. It is a private joint stock company, established on 2 June 2003 as the result of the merger between Hamburgische Landesbank and Landesbank Schleswig-Holstein. Its core business region is Northern Germany and its main focus is on merchant and private banking. The merchant banking activities are focused on shipping, corporate banking, real estate, renewable energy and infrastructure projects. On 31 December 2012, HSH had a balance sheet showing total assets of EUR 131 billion.

- (10) HSH has the following shareholder structure: Hamburg and Schleswig-Holstein together hold 85.38 % of the shares, either directly or via HSH Finanzfonds AöR (hereinafter "Finanzfonds"), an institution established under public law and controlled by Hamburg and Schleswig-Holstein; the Savings Banks Association of Schleswig-Holstein holds 5.31 %; and a group of nine trusts which are advised by J.C. Flowers holds 9.31 %.

Previous aid measures, including the second-loss guarantee

- (11) In May 2009, Finanzfonds granted two State aid measures to HSH, the EUR 10 billion second-loss guarantee and EUR 3 billion in capital. In addition, the German Financial Market Stabilisation Fund (hereinafter "SoFFin") granted to HSH guarantees covering new issuances of debt of up to EUR 17 billion.
- (12) The second-loss guarantee had an effective date of 1 April 2009. It was definitively approved in the 2011 restructuring decision, together with the capital increase and the SoFFin guarantees.
- (13) The second-loss guarantee protects a defined reference portfolio with an initial book value of approximately EUR 185 billion against credit defaults (EUR 82 billion as at year-end 2012). That reference portfolio represented approximately 75 % of the bank's total balance sheet in 2009. Loans to customers comprise the majority of the assets in the reference portfolio (initially EUR 115 billion), but the portfolio also includes fixed income securities (initially EUR 27 billion), bonded loans (initially EUR 15 billion), guarantees on payments (initially EUR 5 billion), and assets-backed securities (initially EUR 9 billion). The assets in the reference portfolio are mainly denominated in US dollars, Euros and British Pounds.
- (14) The ceiling amount of the second-loss guarantee was originally set at EUR 10 billion. The second-loss guarantee only intervenes if losses are posted to the reference portfolio that exceed the first-loss tranche of EUR 3.2 billion which is to be borne by HSH. The second-loss guarantee was hence initially designed to compensate for losses in the reference portfolio of between EUR 3.2 and EUR 13.2 billion.
- (15) In 2011, the ceiling amount of that second-loss guarantee was, on the initiative of HSH, reduced to EUR 7 billion. In March, June, and September 2011 HSH partially repealed the guarantee, in each case by an amount of EUR 1 billion. Those cancellations were noted in the restructuring plan that served as a basis for the 2011 restructuring decision.

- (16) According to the contractual terms and conditions of the second-loss guarantee, HSH pays an annual fee of 4 % of the ceiling amount to Finanzfonds. The partial cancellations of the second-loss guarantee hence reduced the fees that HSH had to pay to Finanzfonds.

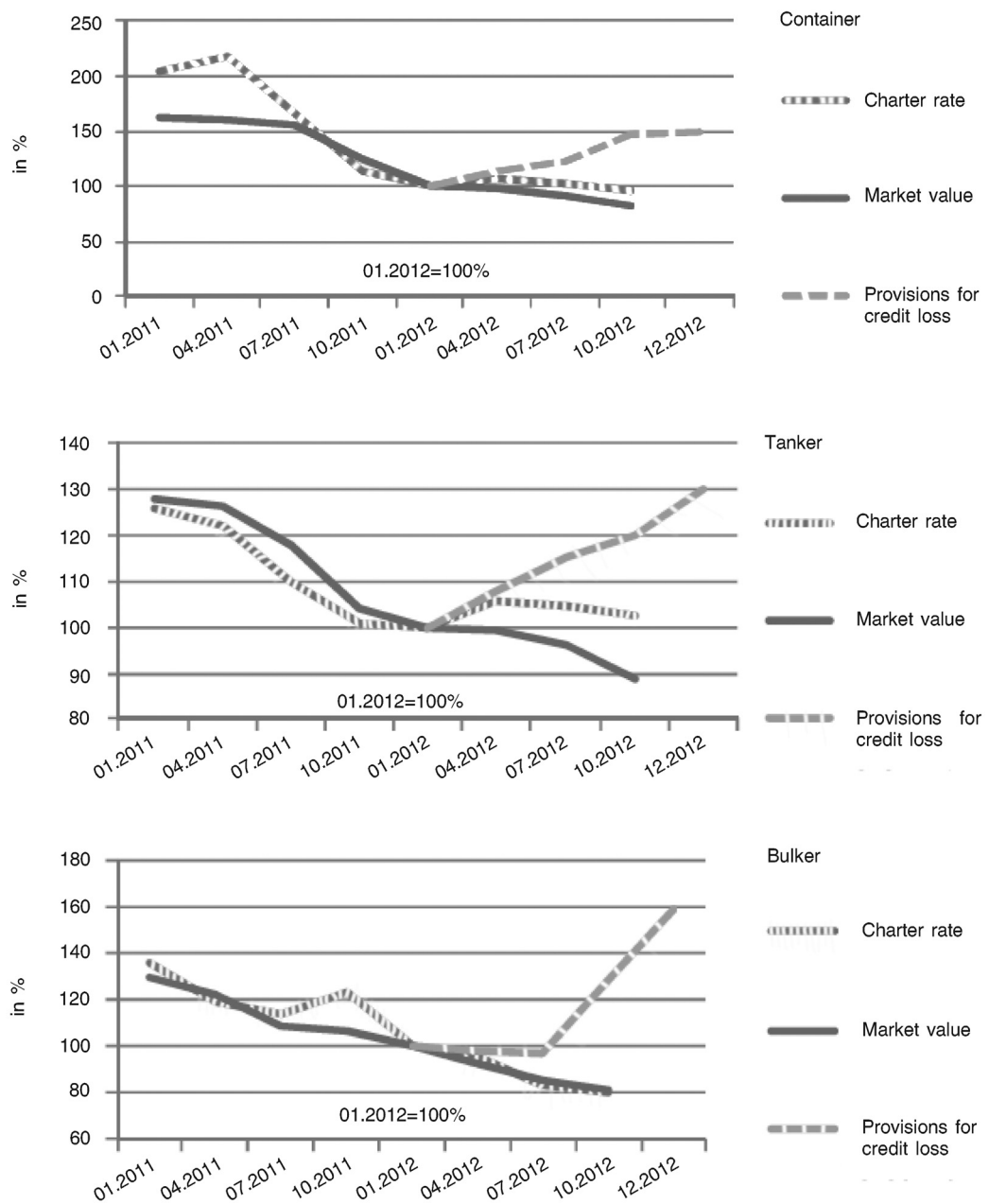
⁽¹⁾ OJ L 225, 21.08.2012, p. 1.

Financial performance of HSH since the 2011 restructuring decision, economic developments in the shipping market and the new business plan

(17) As explained in recital 79 of the 2011 restructuring decision, the focus of HSH was to remain on shipping despite the considerable reductions to which HSH committed itself in that segment ⁽¹⁾. Since the 2011 restructuring decision the situation of the shipping market has significantly deteriorated. As illustrated in Figure 1, both charter rates and the market price of ships continuously declined over the years 2011 and 2012. Together with the EUR/USD exchange rate, they are the main drivers of the probability of default of the shipping portfolio of HSH. They are thereby the main drivers of the loan loss provisions. In particular, for container ships charter rates declined by around one-third over one year following the 2011 restructuring decision, whereas the restructuring plan of 2011 was based on the assumption of a recovery in the charter rates.

Figure 1

Evolution of charter rates and market value of ships over 2011 and 2012 and the impact on HSH provisions



⁽¹⁾ See recital 52 of the 2011 restructuring decision.

- (18) The shipping charter rate assumptions have been revised in the new business plan, as the current level of charter rates is significantly lower than in 2011. The new business plan relies to a certain extent on a recovery of the shipping market, albeit one which would take place later and be weaker than foreseen in the 2011 restructuring plan. Although container rates are projected to remain at below pre-crisis levels (as illustrated in Figure 3), they are projected to [...] (*) by 2015 compared to the level at the end of 2012 (as illustrated in Figure 2).
- (19) HSH has also modified its EUR/USD projections in the new business plan. The exchange rate was projected to remain stable at 1: [1.35 - 1.45] over the restructuring period: in the new business plan the rate is projected to remain stable at 1: [1.25 - 1.40]. That assumption is less favourable to HSH but corresponds to recently observed levels.

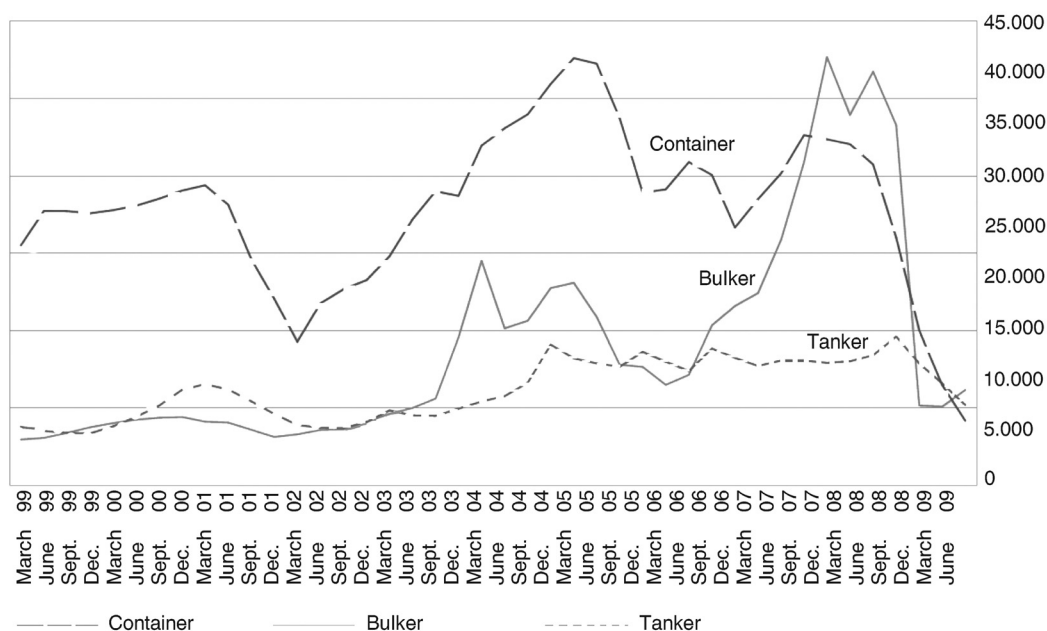
Figure 2

New business plan charter rate assumptions

Charter rates (USD/day)	E2012 expected	E2013 expected	E2014 expected	E2015 expected
Container	[...]	[...]	[...]	[...]
Bulker	[...]	[...]	[...]	[...]
Tanker	[...]	[...]	[...]	[...]

Figure 3

Pre-crisis levels of charter rates in USD/day



- (20) Against that background, HSH has failed to achieve its base case financial projections of the 2011 restructuring decision as illustrated in Figure 4. While the realised figures in 2011 and in 2012 for cost-cutting is above the targets of HSH ⁽¹⁾, its total income is significantly lower than that foreseen in the 2011 restructuring plan ⁽²⁾. The overall result is also significantly below the projections of

(*) Business secret

⁽¹⁾ If the 2012 3Q figure is annualised, the costs of HSH would be EUR [...] million compared to the 2012 target of EUR [...] million.

⁽²⁾ Although the interest income for 2012 was above the targeted level, the total income of HSH was significantly below target mainly because of a low fee income and valuation losses in trading positions.

the 2011 restructuring plan following significantly higher loan loss provisions charged compared to the 2011 projections. That increase in provisions for risk and charges affects both the core bank ⁽¹⁾ and the restructuring unit.

- (21) While the increase of the loan loss provisions is driven to a large extent by the deteriorated situation of the shipping market, the resulting negative effect on the regulatory capital quotas is exacerbated by the mechanics of the applicable regulatory formulae: In view of the smaller remaining guarantee amount (EUR 7 billion as opposed to the initial EUR 10 billion), the decline in the credit ratings led to a disproportionate increase in the regulatory risk weighting of the “senior tranche”, i.e. the part of the shielded portfolio, in which losses would no longer be covered by the (partly cancelled) guarantee. The latter gives rise in turn to an increase in RWA and, as a consequence, to a proportionately lower level of regulatory capital.

Changes in the regulatory environment and market expectations

- (22) Following the 2011 restructuring decision there has been a change in the applicable capital adequacy requirements for banks. In particular, a core equity ratio (hereinafter “CE-ratio”) of 9 %, which was first called for in an EU-wide stress test commenced by the European Banking Authority in 2011, has become a key figure which is now considered to be the essential evidence for a bank’s overall solvency and strength. Today, regulatory authorities as well as market participants such as rating agencies therefore expect banks to constantly hold a 9 % CE-ratio.

Figure 4

Main indicators of the financial performance of HSH comparing the 2011 restructuring plan projections to realized figures and to the projections in the new business plan

(for 2010 actual: Financial performance of HSH according to its restated annual financial statement 2010 as approved by HSH’s auditor)

Group	2008 actual	2009 actual	2010 actual restated	2011 actual	2012 actual	2012 in 2011 plan	2013 in 2011 plan	2014 in 2011 plan	2013 new plan	2014 new plan	2015 new plan
Interest income	2,051	2,121	1,502	1,350	1,520	[...]	[...]	[...]	[...]	[...]	[...]
Total income	157	2,876	1,791	1,324	1,446	[...]	[...]	[...]	[...]	[...]	[...]
Loan loss provisions	(1,888)	(2,794)	(317)	389	(656)	[...]	[...]	[...]	[...]	[...]	[...]
Costs (other than guarantee remuneration)	(899)	(830)	(867)	(837)	(821)	[...]	[...]	[...]	[...]	[...]	[...]
Pre-tax result	(2,968)	(1,325)	73	(206)	(185)	[...]	[...]	[...]	[...]	[...]	[...]
Result	(3,195)	(902)	104	(265)	(124)	[...]	[...]	[...]	[...]	[...]	[...]

Core bank	2008 actual	2009 actual	2010 actual restated	2011 actual	2012 actual	2012 in 2011 plan	2013 in 2011 plan	2014 in 2011 plan	2013 new plan	2014 new plan	2015 new plan
Interest income	1,210	1,401	791	812	1,113	[...]	[...]	[...]	[...]	[...]	[...]
Total income	1,582	1,756	930	871	1,131	[...]	[...]	[...]	[...]	[...]	[...]
Loan loss provisions	(590)	(853)	93	(35)	(312)	[...]	[...]	[...]	[...]	[...]	[...]
Costs (other than guarantee remuneration)	(611)	(557)	(525)	(529)	(467)	[...]	[...]	[...]	[...]	[...]	[...]
Pre-tax result	295	18	330	(115)	509	[...]	[...]	[...]	[...]	[...]	[...]
Final Take (EUR billion)	32,6	3	4	5	7	[...]	[...]	[...]	[...]	[...]	[...]

⁽¹⁾ Core bank is defined in recital 50 of the 2011 restructuring decision.

(23) In addition, new business at the level of the core bank measured by the final take ⁽¹⁾ has been, at EUR [5-10] billion, only close to but below the EUR [6-12] billion projected for the full year in the 2011 restructuring plan.

The notified aid: Increase of the ceiling amount of the second-loss guarantee

(24) Schleswig-Holstein and Hamburg intend to increase the ceiling amount of the second-loss guarantee back to the initial threshold of EUR 10 billion. To that end, HSH and Finanzfonds intend to amend the existing guarantee commitment agreement so as to create the economic position which would have existed if the partial cancellations on the second loss guarantee had never occurred. Even though their existing state laws allow for the increase to be authorised, both Schleswig-Holstein and Hamburg have made the increase dependent on a resolution by their parliaments because of the significance of the measure.

(25) The remuneration for the increased part of the guarantee is based on the existing provisions of the guarantee agreement, that is a base annual fee of 4 % on the nominal amount. It will result in additional payments to Finanzfonds of approximately EUR 120 million per year after the second-loss guarantee is increased by EUR 3 billion.

(26) The parties furthermore intend to agree that HSH will pay a lump sum of approximately EUR 275 million to Finanzfonds as remuneration for the guarantee fees lost through the prior partial cancellations. Thus, Finanzfonds would be put into the economic position which would have existed if the partial cancellations on the second-loss guarantee had never occurred.

(27) HSH has updated its previous restructuring plan and presented a new business plan. The new business plan assumes that the second-loss guarantee is increased to EUR 10 billion.

(28) In detail, in the new business plan HSH expects to see a recovery of the shipping markets and freight charters as of 2014 which has a major impact on the expected financial results both in a base case and a stress case.

III. POSITION OF GERMANY

(29) Germany requests urgent temporary approval of the increase of the ceiling amount of the second-loss guarantee to EUR 10 billion.

(30) Germany does not contest that the second-loss guarantee constitutes aid but doubts that reinstating a ceiling amount of EUR 10 billion constitutes new aid. Germany argues that exactly the same upper threshold was already approved in the 2011 restructuring decision.

(31) Moreover, Germany argues that even if the measure was new aid, it was already found compatible under the 2011 restructuring decision.

(32) If the increase of the second-loss guarantee is not covered by a Commission decision at the moment, Germany requests it to be approved before 30 June 2013 for reasons of financial stability. To that end, Germany recalls that HSH is a systemic bank whose insolvency could lead to serious disruption of the financial system and seriously compromise trust in German banks in general.

(33) Germany points out that BaFin called for appropriate measures to ensure that it has a continued risk transfer effect, ⁽²⁾ so as to ensure a sufficient minimum capitalisation of 9 %.

(34) Germany argues in particular that the persistently strained market environment, especially in the area of shipping, and the decline in the Euro's value against the US dollar has caused an increase in the relevant risk parameters. As a result, there has been a significant increase in the risk weight of the second-loss guarantee tranche. In the opinion of BaFin a material risk transfer is achieved when the first-loss tranche, covered by HSH, and the second-loss tranche, covered by the second-loss guarantee, are jointly sufficient to offset the sum of the multiyear expected losses and of at least 50 % of the multiyear unexpected losses. Under the current market situation, however, BaFin questions whether the second-loss guarantee with a ceiling amount of EUR 7 billion is still apt to ensure the risk transfer. There is an eminent risk that [...]. If that were to happen [...].

(35) The measure is therefore necessary to ensure that HSH can continuously meet the applicable capital requirements. In that context Germany argues that since the 2011 restructuring decision was adopted on 20 September 2011, the applicable capital requirements have increased. BaFin applies the minimum standards defined by the European Banking Authority, requiring that all institutions of systemic relevance maintain a minimum CE-ratio of 9 %. That approach is also in line with a resolution on capital requirements that the European Council reached on 26 October 2011.

(36) Germany argues that the increase of the second-loss guarantee must take place before 30 June 2013 in order to satisfy the demands and expectations HSH's external auditor and rating institutions. Given that point, BaFin considers it as necessary to take that measure at

⁽¹⁾ See Figure 4.

⁽²⁾ The risk shield provided by Hamburg and Schleswig-Holstein reduces the economic capital requirement for default risk, as there has been no economic capital requirement for default risks for positions covered by the guarantee. The associated risk is, up to the ceiling amount, transferred to Hamburg and Schleswig-Holstein. HSH manages both the guaranteed and unguaranteed portfolio in accordance with regulatory and economic principles in order to keep any claim against Hamburg and Schleswig-Holstein under the risk shield as small as possible.

that time. Without that, HSH would in particular be at risk of further downgrades by rating agencies which would subsequently jeopardize the bank's refinancing capacities.

- (37) Finally, Germany points out that there was no suitable private investor solution. For several months, Schleswig-Holstein and Hamburg negotiated with J.C. Flowers about entering into an alternative legal arrangement for a third-loss guarantee of EUR 3 billion. Germany claims that for various reasons it was not possible to positively conclude those negotiations; the reasons were described in detail in a letter that Germany sent to the Commission on 3 May 2013. ⁽¹⁾

IV. ASSESSMENT

A. Existence of State aid under Article 107(1) TFEU

- (38) The increase of the second-loss guarantee is granted by Finanzfonds, which is owned by Hamburg and Schleswig-Holstein, and it thus stems from State resources.
- (39) Furthermore, the Commission notes HSH's cross-border and international activities, so that any advantage from State resources would affect competition in the banking sector and have an impact on intra-Union trade.
- (40) When a guarantee is provided by public authorities, it is necessary to assess whether, in similar circumstances, a private investor operating in normal conditions of a market economy ('a private investor') would have offered a similar coverage under the same terms and conditions and in return for the same remuneration. The fact that no private alternative solution to the increase of the second-loss guarantee could be presented is taken by the Commission to support its assessment that the guarantee would not have been provided at such conditions by a private investor and that the measure therefore provides an advantage to HSH that constitutes State aid within the meaning of Article 107(1) of the TFEU. In conclusion, the increase of the second-loss guarantee by Finanzfonds is therefore a measure that constitutes State aid within the meaning of Article 107(1) TFEU.
- (41) Germany does not contest that the measure constitutes aid. However, Germany argues that the measure should not be considered as new State aid since a second-loss guarantee with a ceiling amount of EUR 10 billion was already approved as State aid by the 2011 restructuring decision. However, the terms and conditions of a guarantee must always be agreed in advance, based on the perceptions of both the guarantor and the guarantee holder of the likelihood that the guarantee will be drawn. If the holder of a guarantee could at any time unilaterally cancel and later reinstall (parts of) the guarantee, it would be in a free rider position and could benefit from coverage without paying for related costs. Such an arrangement would allow holders to opportunistically reinstate a cancelled guarantee once the risk covered by the guarantee became more likely to materialise. Consequently,

a cancellation of a guarantee has a binding character, and any re-installment of a previously cancelled tranche of coverage under a guarantee should be considered as a new agreement between the guarantor and the guarantee holder, based on a distinct and new economic assessment of the risk factors that may have changed over time. In the case at hand, an increase of the ceiling amount of the guarantee was not provided for in the terms and conditions of the guarantee that was approved in the 2011 restructuring decision. The increase of the ceiling therefore requires a change of the previous terms and conditions, and must consequently be considered as granting a new guarantee. Moreover, the fact that the governments of Schleswig-Holstein and Hamburg have to agree anew to the measure underlines that there is a new obligation in budgetary terms.

- (42) The Commission therefore does not accept the position of Germany that the increase does not constitute a genuinely new State aid measure.
- (43) Based on the requirements set out in section 5.5 of the Impaired Assets Communication ⁽²⁾, and in line with its previous assessment in recital 157 of the 2011 restructuring decision, the Commission at this stage assumes that the aid amount of the EUR 3 billion increase of the second-loss guarantee is equal to its nominal amount of EUR 3 billion. That amount is derived from the difference between the transfer price and the market value of the assets in the defined reference portfolio but capped at the notional amount of the guarantee increase.

B. Compatibility of the aid

1. Legal basis for the compatibility assessment

- (44) Article 107(3)(b) TFEU provides that State aid may be considered to be compatible with the internal market where it is intended to "remedy a serious disturbance in the economy of a Member State".
- (45) In light of the currently still fragile situation of the financial markets, the Commission continues to base its assessment of State aid measures in the banking sector on Article 107(3)(b) TFEU, as it has explained in the 2011 Prolongation Communication ⁽³⁾. In accordance with its previous assessment in recital 161 of the 2011 restructuring decision, the Commission acknowledges that the breakdown of HSH could directly affect the financial markets and thus the entire economy of Germany.
- (46) The general principles applicable for State aid granted to financial institutions are set out in point 15 of the Banking Communication ⁽⁴⁾. Those principles have been further

⁽¹⁾ [...].

⁽²⁾ Communication from the Commission on the treatment of impaired assets in the Community banking sector, OJ C 72, 26.3.2009, p. 1.

⁽³⁾ Commission Communication on the application, from 1 January 2012, of State aid rules to support measures in favour of banks in the context of the financial crisis, OJ C 356, 6.12.2011, p. 7.

⁽⁴⁾ Communication on the application of State aid rules to measures taken in relation to financial institutions in the context of the current global financial crisis, OJ C 270, 25.10.2008, p. 8.

elaborated in the Recapitalisation Communication ⁽¹⁾. Both Communications were subsequently amended by the 2010 Prolongation Communication ⁽²⁾ and the 2011 Prolongation Communication.

2. *Compatibility of the aid under the 2011 restructuring decision*

(47) Germany claims that, even if the Commission were to consider the measure to be new aid, it has already been found compatible under the 2011 restructuring decision. Germany argues that, since the Commission already found a ceiling amount of EUR 10 billion compatible in the 2011 restructuring decision, it would now be bound by that assessment and could not come to a different conclusion.

(48) The Commission indeed decided that a EUR 10 billion ceiling amount was compatible with the internal market in the 2011 restructuring decision. However, that assessment was based on the Commission's evaluation of the second-loss guarantee notified by Germany on 30 April 2009 in light of the economic situation at the moment it adopted that decision and of the financial projections that HSH presented in the business plan examined in that decision. In particular, the restructuring plan was based on the assumption that HSH would pay guarantee fees only for a EUR 7 billion guarantee ⁽³⁾.

(49) However, as the proposed grant of new aid has been notified, the Commission has to assess its compatibility. That examination will need to focus on factors that were relevant for Commission's previous assessment but in their current form. In particular, when assessing the viability of HSH, the Commission must consider the current economic situation as well as the revised financial projections presented in the new business plan.

(50) In that respect the Commission notes in particular that the economic situation in the shipping sector has deteriorated since the 2011 restructuring decision was taken. The importance of shipping activities was already identified as problematic for the viability of HSH in the 2011 restructuring decision ⁽⁴⁾. In fact, the current shipping crisis has proved to be deeper and longer than was initially expected by the markets and by HSH ⁽⁵⁾. That situation has affected the creditworthiness of ship financing in general, resulted in poorer credit ratings, and led to an increase of risk-weighted assets held by HSH. Notwithstanding the current situation, Germany still assumes that shipping markets will start to recover

as of 2014. However, the Commission notes that other market actors have taken a more pessimistic view, considering that the additional capacity of new large container vessels to be launched in 2013 and 2014 will put further pressure on freight rates. ⁽⁶⁾ At this stage the Commission therefore has doubts that the economic outlook, in particular for the shipping markets, has been sufficiently prudently taken into account in HSH's new business plan.

(51) The 2011 restructuring decision identified the exposure of HSH to the EUR/USD exchange rate as another risk factor for it ⁽⁷⁾. The weakening of the EUR since 2011 ⁽⁸⁾ has further contributed to the negative results of HSH and increased its risk weighted assets compared to the projections in the 2011 restructuring plan.

(52) The Commission also notes that the increase of the guarantee will result in higher guarantee fees compared to those HSH previously planned to pay. In total the costs for the additional guarantee fees will add up to approximately EUR [0.7 – 1.2] billion. The increase of the ceiling amount of the guarantee will hence lead to additional costs that significantly affect HSH's future profitability. Although the level of remuneration is presumably adequate for the amount and kind of aid received, it has to be reviewed whether it is compatible with HSH's financial capacities, in particular if the financial crisis should continue.

(53) HSH has incorporated the additional guarantee fees in its new business plan, but has not provided an updated stress scenario.

(54) The Commission also doubts the robustness of the assumptions made in the new business plan. To date, the volume of new business has not developed to the extent expected ⁽⁹⁾. The Commission therefore questions whether HSH needs to adjust its business strategy and consider alternative actions in order to restore its long-term viability.

(55) Finally, the negative financial results recorded since the 2011 restructuring decision have further weakened the capital position of HSH whereas its weak capitalisation had been identified as a main viability issue in the 2011 restructuring decision ⁽¹⁰⁾. The increased probability of default assumptions due to the worsened shipping market ⁽¹¹⁾ results in significantly increased risk weights of the shipping portfolio of HSH, which in turn drives down the solvency ratios. That effect has been limited until now by the State guarantee on the legacy portfolio.

(56) In sum, the Commission currently has doubts that HSH will return to viability as assumed in the 2011 restructuring decision on the basis of the new business plan

⁽¹⁾ Commission Communication on the Recapitalisation of financial institutions in the current financial crisis: limitation of the aid to the minimum necessary and safeguards against undue distortions of competition, OJ C 10, 15.1.2009, p. 2.

⁽²⁾ Commission Communication on the application, from 1 January 2011, of State aid rules to support measures in favour of banks in the context of the financial crisis, OJ C 329, 7.12.2010, p. 7.

⁽³⁾ See recital 43 and Table 11 of the 2011 restructuring decision.

⁽⁴⁾ See recital 223 of the 2011 restructuring decision.

⁽⁵⁾ See recitals 17 and 18.

⁽⁶⁾ Cf. for example the publication "global ship operators scramble for liquidity to stay afloat", published by Standard & Poor's on 3 April 2013, p. 5.

⁽⁷⁾ See recital 221 of the 2011 restructuring decision.

⁽⁸⁾ EUR/USD at 30 June 2011 closed at 1:1.45 compared to 1:1.32 on 1 January 2013.

⁽⁹⁾ See recital 21.

⁽¹⁰⁾ See recitals 229 to 232 of the 2011 restructuring decision.

⁽¹¹⁾ See recital 17.

and requests HSH to submit detailed information that corroborates all assumptions made in the new business plan. In addition, the German authorities are invited to provide further evidence that the outlook for the shipping markets in the new business plan is based on sufficiently prudent estimates, as well as further evidence that the additional guarantee fees will not unduly overstretch HSH's financial capacities, even in a stress scenario.

- (57) As regards burden-sharing and competition measures, the Commission notes that it already considered those criteria for a second-loss guarantee covering an amount of EUR 10 billion. In recital 263 of the 2011 restructuring decision the Commission already concluded that the proposed restructuring plan resulted in an adequate own contribution and burden-sharing, and in recital 270 of that decision the Commission concluded that the proposed competition measures could be viewed as appropriate and sufficient. Even though the Commission considers that the increase of the second-loss guarantee from the current ceiling amount of EUR 7 billion to EUR 10 billion constitutes a new State aid measure, as stated in recital (31), it notes that the new measure stays within the boundaries of the measure approved in the 2011 restructuring decision. The Commission notes that the new business plan offers the same burden-sharing measures and competition measures as the previous restructuring plan; as the new aid stays within the boundaries already approved in the 2011 restructuring decision, the Commission at this stage has no doubts that those measures are still adequate.

3. *Temporary approval of the aid*

- (58) Germany requests a temporary approval of the aid even if the Commission has doubts as regards the compatibility of the aid.
- (59) First, the Commission notes that the planned increase of the ceiling amount is from a regulatory perspective apt to ensure that the second-loss guarantee has a continued risk transfer effect.⁽¹⁾
- (60) Second, the Commission accepts that the increase of the second-loss guarantee to the amount of EUR 10 billion is necessary in order to prevent that a further deterioration of the relevant macroeconomic factors jeopardizes the risk transfer that was achieved by protecting the reference portfolio with the second-loss guarantee. That situation would significantly lower the capital ratios of HSH below the applicable capital requirement of 9%. Without an increase of the second-loss guarantee, the consequences of a further deterioration of the relevant macroeconomic could fundamentally put the viability prospects of HSH into question.

⁽¹⁾ As already previously assessed in recital 43 of its temporary approval decision of 29 May 2009, the Commission considers that the secondary-loss guarantee is in principle an appropriate instrument to address HSH's problems, serving as a risk shield that in its design and in its effects allows HSH to avoid considerable write-downs and effectively releases the bank from regulatory capital requirements.

- (61) Third, the Commission considers the aid to be adequately remunerated. The specific features of the second-loss guarantee provided by Finanzfonds have already been assessed in the 2011 restructuring decision. In recital 153 of that decision the Commission confirmed that the nature of the second-loss guarantee is similar to an asset relief measure which has to be assessed under the Impaired Asset Communication. Hence, the second-loss guarantee should in principle be remunerated at the same level as a capital injection⁽²⁾, which is not the case as the basic fee of 400 basis points on the outstanding nominal amount of the guarantee is lower than the remuneration level of a capital injection. However, in recital 212 of the 2011 restructuring decision the Commission concluded that a basic fee of 400 basis points on the outstanding nominal amount fulfilled the remuneration requirements as set out in point 41 of the Impaired Asset Communication and that it was in line with of the Commission's decisional practice, as the total fee structure included at least a partial claw-back and was combined with a far-reaching restructuring of HSH. The fact that the Commission found the remuneration level of 400 basis points acceptable in the 2011 restructuring decision, however, does not require the Commission to now come to the same conclusion as the increase of the second-loss guarantee will take place in a different economic situation. As set out in recital (38), any increase of a guarantee must be considered as a genuinely new agreement between the guarantor and the guarantee holder. The assessment of that new measure must be based on a distinct and new economic assessment of the risk factors that may have changed over time. The Commission notes in that context that certain relevant risk parameters have deteriorated since the 2011 restructuring decision was taken, due to a persistently strained market environment, especially in the area of shipping, and the decline in the Euro's value against the US dollar.

- (62) From an economic point of view the deterioration of relevant risk parameters is, however, mitigated by two elements: First, the lump sum payment of approximately EUR 275 million de facto increases the level of remuneration for the risk that Finanzfonds has assumed, since the calculation of the remuneration level refers to the period in which the risk is actually taken by Finanzfonds, starting when the guarantee is increased. Second, HSH and Finanzfonds had initially agreed on a basic fee of 400 basis points on the total outstanding nominal amount of the guarantee, without any further differentiation. However, in theory the risk that the guarantee will actually be drawn is not equally distributed across the whole nominal amount of the guarantee; it is much more likely that the first Euro of the guarantee would be consumed than the last Euro. Finanzfonds will nevertheless receive the same basic fee for the EUR 3 billion increase as for the current contracted volume of EUR 7 billion, although in comparison the inherent risk of the increased part is lower. Taking those two elements into consideration, the Commission agrees

⁽²⁾ This is also the rationale of Annex 4 II. Of the Communication from the Commission on the treatment of impaired assets in the Community banking sector, OJ C 72, 26.03.2009, p. 1 and has been applied as such in the decision of the Commission of 31 March in case ING.

with Germany's position that in the case at hand the remuneration level of 400 basis points can be considered as an adequate remuneration.

- (63) In sum, the Commission concludes that the aid is temporarily compatible with the internal market.
- (64) For the above reasons, the Commission concludes that the State aid in favour of HSH, consisting of an increase of the second-loss guarantee from EUR 7 billion to EUR 10 billion, is temporarily compatible with the internal market pursuant to Article 107(3)(b) TFEU.
- (65) The Commission considers that the increase of the second-loss guarantee from EUR 7 billion to EUR 10 billion constitutes new State aid within the meaning of Article 107(1) TFEU. On the basis of the foregoing assessment, the Commission doubts that the aid can be found to be compatible with the internal market.

In the light of the foregoing considerations, the Commission, acting under the procedure laid down in Article 108(2) TFEU, requests Germany to submit its comments and to provide all such information as may help to assess the aid, within one month of the date of receipt of this letter. In particular, it requests Germany to provide detailed information corroborating all assumptions made in the new business plan, further evidence that the outlook for the shipping markets was based on suffi-

ciently prudent estimates, and further evidence that the additional guarantee fees will not unduly overstretch HSH's financial capacities, even in a stress scenario. The Commission requests Germany to forward a copy of this letter to the potential recipient of the aid immediately.

The Commission wishes to draw the attention of Germany to Article 14 of Council Regulation (EC) No 659/1999, which provides that all unlawful aid may be recovered from the recipient.

The Commission warns Germany that it will inform interested parties by publishing this letter and a meaningful summary of it in the *Official Journal of the European Union*. It will also inform interested parties in the EFTA countries which are signatories to the EEA Agreement, by publication of a notice in the EEA Supplement to the *Official Journal of the European Union* and will inform the EFTA Surveillance Authority by sending a copy of this letter. All such interested parties will be invited to submit their comments within one month of the date of such publication.

For reasons of financial stability, however, the Commission approves the aid temporarily for six months or, if Germany submits all required information, until the Commission has adopted a final decision.

Germany accepts exceptionally that the adoption of the decision be in the English language.'

EUR-Lex (<http://new.eur-lex.europa.eu>) offers direct access to European Union legislation free of charge. The *Official Journal of the European Union* can be consulted on this website, as can the Treaties, legislation, case-law and preparatory acts.

For further information on the European Union, see: <http://europa.eu>



Publications Office of the European Union
2985 Luxembourg
LUXEMBOURG

EN