



EUROPEAN COMMISSION

Brussels, 20.7.2011
SEC(2011) 943 final

COMMISSION STAFF WORKING PAPER

Accompanying the document

**REPORT FROM THE COMMISSION TO THE EUROPEAN PARLIAMENT, THE
COUNCIL, THE EUROPEAN ECONOMIC AND SOCIAL COMMITTEE AND THE
COMMITTEE OF THE REGIONS**

**on the implementation of the national strategy plans and the Community strategic
guidelines for rural development (2007-2013).**

{ COM(2011) 450 final }

**Table 1: EAFRD expenditures realized 2007-2009, EAFRD total allocation 2007-2013
(before HC as at mid-2008) and uptake level¹**

Measures code	Measures	Number of RDP implementing the measures (max 88)	EAFRD 2007-2009	Total allocation 2007-2013	uptake level
111	Vocational training and information actions	78	93 266 011	996 338 654	9%
112	Setting-up of young farmers	69	537 109 921	2 729 762 572	20%
113	Early retirement	52	750 047 270	2 644 456 215	28%
114	Use of advisory services	60	12 241 690	662 546 667	2%
115	Setting up of farm management, relief and advisory services	33	1 958 763	137 271 564	1%
121	Modernisation of agricultural holdings	86	2 165 093 096	9 652 819 268	22%
122	Improvement of the economic value of forests	50	50 823 649	652 127 142	8%
123	Adding value to agricultural and forestry products	86	528 305 883	5 519 893 083	10%
124	Cooperation for development of new products, processes and technologies	55	8 006 806	336 457 412	2%
125	Infrastructure related to the development and adaptation of agriculture and forestry	78	456 373 495	4 866 010 414	9%
126	Restoring agricultural production potential damaged by natural disasters and introducing appropriate prevention actions	25	69 860 106	732 535 861	10%
131	Meeting standards based on Community legislation	17	44 128 620	96 683 558	46%
132	Participation of farmers in food quality schemes	51	7 694 531	293 455 582	3%
133	Information and promotion activities	47	6 998 387	212 320 517	3%
141	Semi-subsistence farming	8	268 766 385	915 274 606	29%
142	Producer groups	10	40 151 798	325 507 181	12%
143	Providing farm advisory and extension services	2	624 804	131 773 438	0%
Total Axis 1			5 041 451 215	30 905 233 734	16%
211	Payments to farmers in areas with handicaps (Article 36 (a) (i) of Reg. (EC) No 1698/2005)	58	2 535 342 208	6 004 100 602	42%
212	Payments to farmers in areas with handicaps in mountain areas (Article 36 (a) (ii) of Reg. (EC) No 1698/2005)	74	2 689 096 097	6 642 712 499	40%
213	Natura 2000 payments and payments linked to Directive 2000/60/EC (WFD)	28	38 923 729	471 826 214	8%
214	Agri-environment commitments	88	6 766 447 108	20 317 820 878	33%
215	Animal welfare payments	21	104 442 195	312 974 710	33%

¹ Source: DG AGRI

216	Non-productive investments	49	26 179 845	462 790 092	6%
221	First afforestation of non-agricultural land	66	487 931 021	2 417 586 932	20%
222	First establishment of agroforestry systems on agricultural land	16	-	22 743 954	0%
223	First afforestation of non-agricultural land	39	21 584 293	360 798 588	6%
224	Natura 2000 payments	15	3 656 799	110 646 424	3%
225	Forest-environment payments	31	10 899 107	265 436 228	4%
226	Restoring forestry potential and introducing prevention actions	58	217 636 399	1 552 976 933	14%
227	Non-productive investments	71	71 172 180	808 852 967	9%
Total Axis 2			12 973 310 981	39 751 267 021	33%
311	Diversification into non-agricultural activities	67	84 033 772	1 442 111 649	6%
312	Business creation and development	51	57 332 430	2 185 744 982	3%
313	Encouragement of tourism activities	62	66 389 380	1 300 160 835	5%
321	Basic services for the economy and rural population	64	141 770 148	2 685 865 662	5%
322	Village renewal and development	54	223 388 217	3 046 071 082	7%
323	Conservation and upgrading of the rural heritage	69	125 595 829	1 265 471 141	10%
331	Training and information for economic actors operating in the fields covered by Axis 3	35	9 328 125	136 185 036	7%
341	Skills acquisition, animation and implementation	38	21 891 831	161 215 956	14%
Total Axis 3			729 729 730	12 222 826 343	6%
411	Implementing local development strategies - axis 1	61	13 841 102	522 378 659	3%
412	Implementing local development strategies - axis 2	43	1 446 691	165 209 131	1%
413	Implementing local development strategies - axis 3	86	96 583 627	3 725 553 233	3%
421	Implementing cooperation projects	87	1 038 962	265 619 794	0%
431	Running the local action group, acquiring skills and animating the territory	86	47 765 310	854 443 162	6%
Total Axis 4			160 675 692	5 533 203 979	3%
511	Technical assistance		197 240 105	1 925 361 913	10%
611	Direct Payments (RO and BG)		342 426 737	645 581 697	53%
Grand Total			19 444 834 460	90 983 474 687	21%

**Table 2(a): Monitoring output indicators 2007-2009, and targets 2007-2013
(before HC as at end 2009) ²**

Code	Measure	Output	Unit	Value (2007-2009)	Targets 2007-2013	% target
111	Vocational training and information actions	Number of participants in training	N.	1 136 877	5 254 417	22%
112	Setting up of young farmers	Number of assisted young farmers	N.	36 660	188 427	19%
113	Early retirement	Number of beneficiaries	N.	17 385	81 453	21%
		Number of hectares released	Ha	230 000	998 627	23%
114	Use of advisory services	Number of farmers supported	N.	34 800	1 125 166	3%
		Number of forest holders supported	N.	1 070	64 042	2%
115	Setting up of management, relief and advisory services	Number of newly set up management, relief or advisory services	N.	185	1 191	16%
121	Modernisation of agricultural holdings	Number of farm holdings that received investment support	N.	105 800	592 007	18%
122	Improvement of the economic value of forests	Number of forest holdings that received investment support	N.	6 020	66 921	9%
123	Adding value to agricultural and forestry products	Number of enterprises supported	N.	7 060	67 742	10%
124	Cooperation for development of new products, processes and technologies	Number of cooperation initiatives supported	N.	353	5 683	6%
125	Infrastructure related to the development and adaptation of agriculture and forestry	Number of operations supported	N.	16 623	48 097	35%
126	Restoring agricultural production potential damaged by natural disasters and prevention actions	Supported area of damaged agricultural land	Ha	336 000	1 137 964	30%
131	Meeting standards based on Community legislation	Number of beneficiaries	N.	8 214	88 133	9%

² Source: RDIS IDIM 2009, outputs indicators for commitments made from 2007 onwards

132	Participation of farmers in food quality schemes	Number of supported farm holdings participating in a quality scheme	N.	134 000	393 381	34%
133	Information and promotion activities	Number of supported actions	N.	2 041	51 635	4%
141	Semi-subsistence farming	Number of semi-subsistence farm holdings supported	N.	8 885	110 889	8%
142	Producer groups	Number of supported producer groups	N.	280	2 162	13%
LFA	Support to Less Favoured Areas	Number of supported holdings in LFAs	N.	2 568 319	3 600 000	72%
		Supported agricultural land in LFAs	Ha	50 900 000	55 000 000	93%
213	Natura 2000 payments and payments linked to Directive 2000/60/EC (WFD)	Number of supported holdings in Natura 2000 areas/under WFD	N.	29 679	52 133	57%
		Supported agricultural land under Natura 2000/under WFD	Ha	536 492	1 085 818	49%
214	Agri-environment payments	Number of farm holdings	N.	947 000	2 778 267	34%
		Total area under agri-environmental support	Ha	33 150 000	60 000 000	55%
		Physical area under agri-environmental support	Ha	21 528 712	45 000 000	48%
		Total Number of contracts	N.	1 675 447	2 931 033	57%
215	Animal welfare payments	Number of animal welfare contracts	N.	126 700	184 287	69%
216	Non-productive investments	Number of farm holdings	N.	5 642	82 026	7%
221	First afforestation of agricultural land	Number of beneficiaries receiving support	N.	14 100	130 089	11%
		Number of ha afforested land	Ha	72 500	600 000	12%
222	First establishment of agroforestry systems on agricultural land	Number of beneficiaries	N.	0	277	0%
		Number of ha under new agroforestry systems	Ha	0	38 576	0%
223	First afforestation of non-agricultural land	Number of beneficiaries receiving support	N.	2 250	48 806	5%
		Number of ha of afforested land	Ha	19 500	222 776	9%
224	Natura 2000 payments	Number of forest holdings receiving aid in Natura 2000 area	N.	4 075	52 000	8%

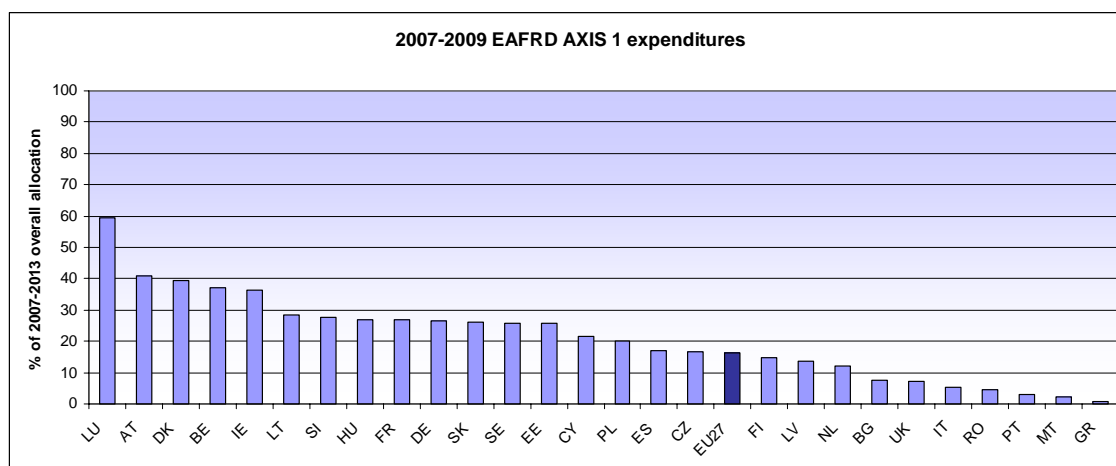
		Supported forest land (ha) in Natura 2000 area	Ha	71 926	382 491	19%
225	Forest-environment payments	Number of forest holdings receiving support	N.	5 130	75 610	7%
		Total forest area under forest environment support	Ha	211 886	2 135 933	10%
		Physical forest area under forest environment support	Ha	187 256	919 762	20%
		Number of contracts	N.	8 750	76 939	11%
226	Restoring forestry potential and introducing prevention actions	Number of prevention/restoration actions	N.	19 370	132 717	15%
227	Non-productive investments	Number of supported forest holders	N.	39 411	136 876	29%
311	Diversification into non-agricultural activities	Number of beneficiaries	N.	4 971	83 944	6%
312	Business creation and development	Number of micro-enterprises supported/created	N.	6 111	94 700	6%
313	Encouragement of tourism activities	Number of new tourism actions supported	N.	3 691	44 146	8%
321	Basic services for the economy and rural	Number of supported actions	N.	8 707	65 417	13%
322	Village renewal and development	Number of villages where actions took place	N.	12 790	32 400	39%
323	Conservation and upgrading of the rural heritage	Number of rural heritage actions supported	N.	23 462	69 842	34%
331	Training and information	Number of economic actors participating	N.	49 390	501 000	10%
341	Skills acquisition, animation and implementation	Number of actions supported	N.	5 489	16 045	34%
414 412 413	Implementing local development strategies	Number of projects financed by LAGs	N.	7 090	170 900	4%
		Number of beneficiaries supported	N.	8 756	1 227 326	1%
421	Implementing cooperation projects	Number of cooperation projects	N.	130	4 711	3%
431	Running the local action group, acquiring skills and animating the territory	Number of actions supported	N.	20 434	89 895	23%

**Table 2(b): Monitoring result indicators 2007-2009, and targets 2007-2013
(before HC as at end 2009) ³**

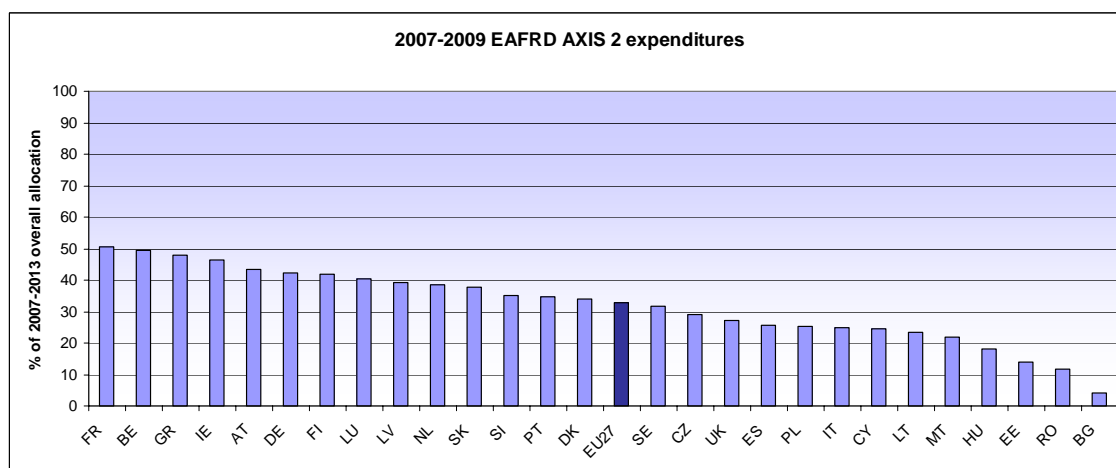
	result indicators		2007-2009 values	Targets
AXIS 1	Number of participants that successfully ended a training activity related to agriculture and/or forestry		696 000	2 200 000
	Increase in GVA in supported holdings/enterprises ('000 EUR)		1 200 000	25 900 000
	Number of holdings / enterprises introducing new products and/or new techniques		33 400	334 000
	Number of farms entering the market		1 215	130 000
	Value of agricultural production under recognized quality label/standards (millions of euros)		3 200	16 700 000
Axis 2	Agricultural and forestry areas under successful land management contributing to (ha)	Biodiversity	43 000 000	57 000 000
		Water quality	27 000 000	38 000 000
		Climate change	25 000 000	26 000 000
		Soil quality	30 000 000	37 000 000
		Avoidance marginalisation	45 000 000	53 000 000
Axis3	Increase in Non-agricultural gross value added in supported business ('000 EUR)		98 000	3 100 000
	Gross number of jobs created		4 020	307 000
	Additional number of tourist visits	Number of day visitors	2 227 000	7 808 000
		Number of overnight stays	245 000	7 366 000
	Population in rural areas benefiting from improved services		22 800 000	71 000 000
	Increase in internet penetration in rural areas (nbr of persons)		1 070 000	47 060 000
	Number of participants that successfully ended a training activity in the field of axis 3		121 300	572 000

³ Source: RDIS IDIM 2009, outputs indicators for commitments made from 2007 onwards

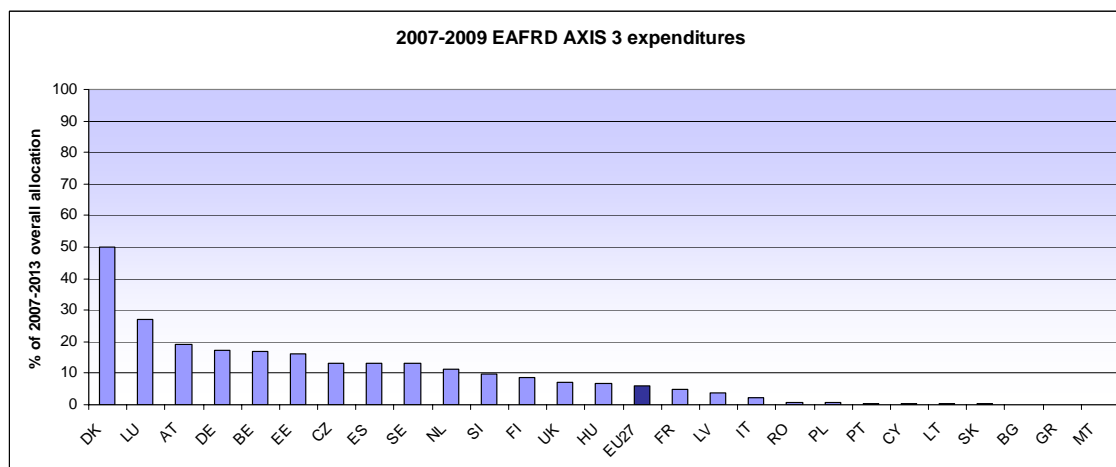
Table 3: Overall execution of the EAFRD budget by the end of 2009 compared to the overall 2007-2013 allocation, axis per axis⁴



EU-27 average: 16,3%



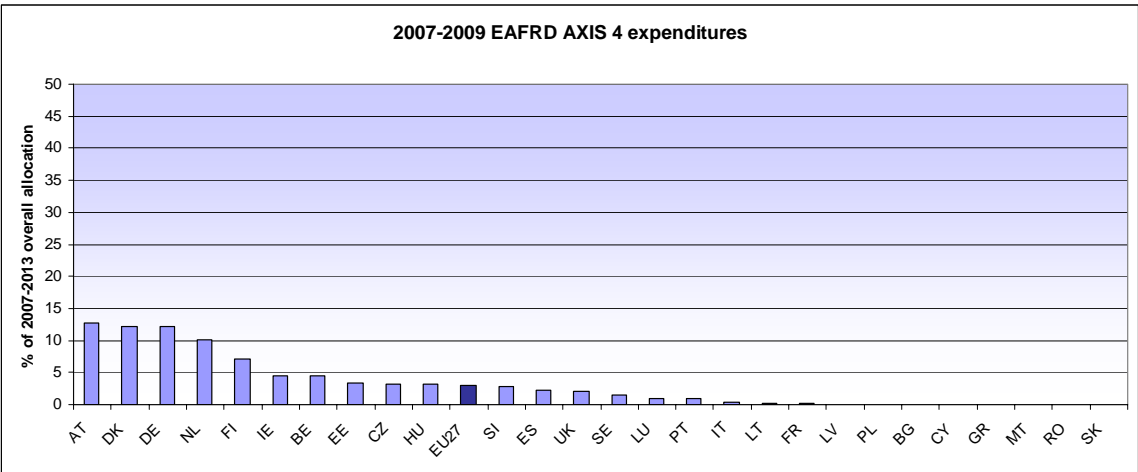
EU-27 average: 32,7%



EU-27 average: 6%

⁴

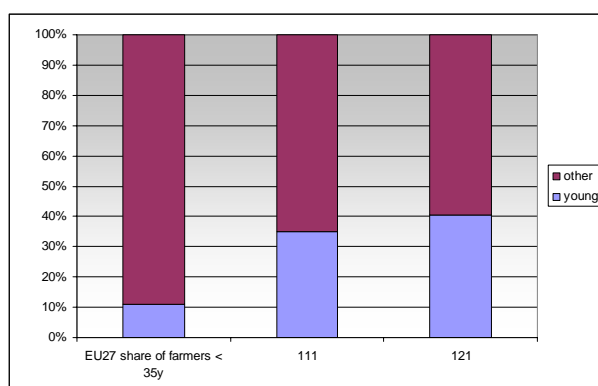
Sources: DG AGRI



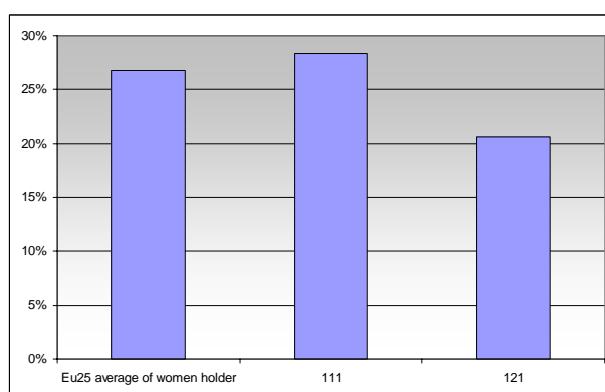
EU-27 average: 2,9%

Table 4: axis 1 and axis 3 implementation break down according gender and age as laid down in the Art. 81 of the Reg. (EC) No 1698/2005⁵

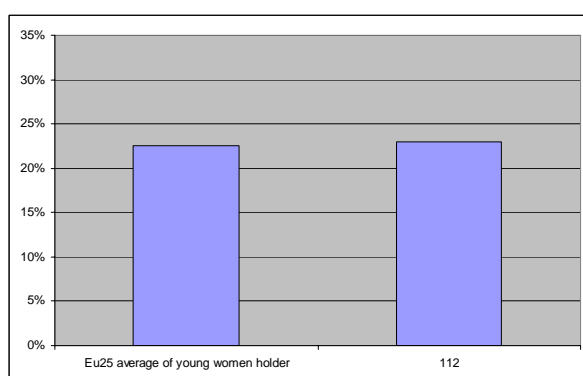
Share of the beneficiaries under 40 years for the measures training (111) and modernisation (121)



Share of women beneficiaries for the measures training (111) and modernisation (121) compared to the EU-25 share of women holders for the whole sector⁶



Share of women beneficiaries for the measure young farmer (112) compared to the EU-25 share of young women holders for the whole sector⁷



⁵ Source: RDIS IDIM 2009, outputs indicators for commitments made from 2007 onwards

⁶ Eurostat

⁷ Eurostat

Share of women beneficiaries for the measures diversification (311) and micro enterprises support (312)

